



# TRD



## Full Line Product Guide



**TRD CYLINDERS ARE RECOGNIZED  
FOR THEIR DURABILITY AND  
LONG-LASTING PERFORMANCE**



**TA SERIES**

NFPA Heavy Duty Aluminum Tie Rod Cylinder

- 10 Bore Sizes from 1.5" - 12"
- 17 NFPA Mounts
- Permanent Lubrication
- Floating Rod Bushing
- PTFE Piston Wear Band



**TD SERIES**

NFPA Tough-Duty Aluminum Cylinder

Same construction as the TA Series but with these performance features standard:

- Impact Dampening Piston Seals
- Fixed Cushions
- PTFE Piston Wear Band



**FM SERIES**

NFPA Flush Mount Aluminum Cylinder

- 7 Bore Sizes from 1.5" - 6"
- 12 NFPA Mounts
- No exposed tie rods or nuts at head and cap provides a clean design
- Optional Rod Lock

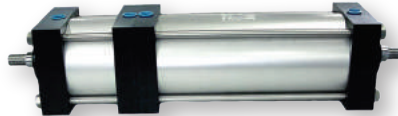


**RS SERIES**

Repairable Stainless Steel Cylinder

NFPA style mounting with a longer than standard NFPA body length. Made with 303/316 stainless steel, providing excellent corrosion resistance.

Option U meets FDA-USDA certification.

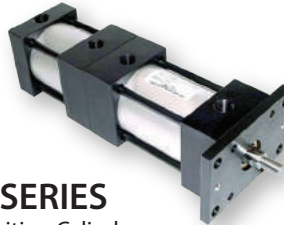


**BTB SERIES**

Back-to-Back

A true 4 position cylinder by combining 2 individual cylinders with common bore sizes together as 1 unit with common tie rods. "Hard" stops are provided with all 4 positions.

Back-to-Back cylinders reduce overall costs.



**3P SERIES**

3-Position Cylinder

3-Position cylinders consist of multiple cylinders built as one unit having one exposed working rod end, capable of delivering 3 rod positions. Reduces space and the cost to mount multiple cylinders.



**TM SERIES**

Tandem Cylinder

Tandem any series cylinder together to provide unlimited design possibilities. Air over oil is the most common use of tandem cylinders. The Air typically provides the force to extend and retract the cylinder. The oil provides the precise control of the stroke.

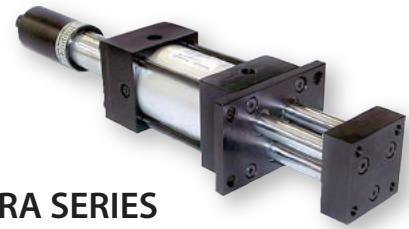


**AB121 Booster**

**IT Series Intensifiers**

Boosters provide 2:1 air-to-air ratio boost.

Air to Air Intensifiers can magnify initial PSI by 4 times or more. Output forces available up to 250 PSI.



**TRA SERIES**

Triple Rod Design Cylinder

TRA cylinders use three piston rods to increase stability and strength and also feature a non-rotating design.

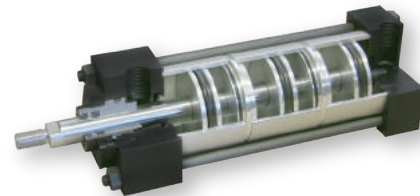
Heavy duty design allows for longer strokes.



**TC SERIES**

2-Stage Telescoping Cylinder

Two-stage telescoping design which remains 100% double acting while providing incredible space savings. Three effective bore sizes to choose from: .75", 1.5", 2.5".



**MSE & MSR SERIES**

Multi-Stage Cylinders

Double acting, single rod end cylinders that multiply the force output by supplying air to multiple pistons. MSE multiplies the force on the extend stroke, MSR multiplies the force on the retract stroke.



**TAS SERIES**

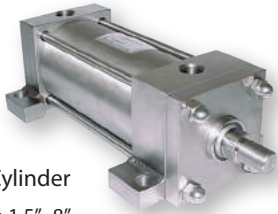
Steel Cylinder

Steel cylinders and components provide extra strength and durability to withstand abuse while maintaining reliable performance. Custom designs can be engineered for challenging applications.

## SS SERIES

Stainless Steel Cylinder

- 8 Bore Sizes from 1.5" - 8"
- 12 NFPA Mounts
- 303/304 stainless steel
- Common applications include food processing, chemical, medical, pharmaceutical and other corrosive environments.



## BTP SERIES

Heavy Duty Bench Top Press

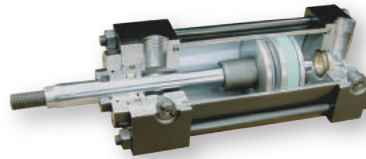
Heavy duty Steel keyed & bolted construction. Adjustable work heights and an open work area allowing for thorough feed or side feed of large parts. Strokes from 1" - 6".



## MH SERIES

Medium Duty Hydraulics

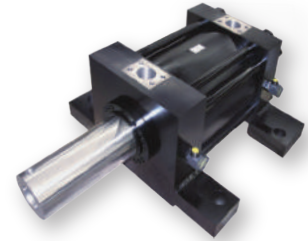
- 675 - 1500 PSI
- Bore sizes 1.5" - 8"
- 18 NFPA Mounts
- Many of the same features and seals used in the 3000 PSI series are included to increase overall performance and life.



## HH SERIES

Heavy Duty Hydraulics

- 3000 PSI
- Bore sizes 1.5" - 8"
- 18 NFPA Mounts
- Complete line of Hydraulic Rod Locks that can be fitted to the most common bore and rod sizes.



Standard delivery on Hydraulic cylinders is 2-3 days!

## SS-MS SERIES

Stainless Steel Multi-Stage Cylinder

All the benefits and design features of the multi-stage cylinders combined with the corrosion resistance of stainless steel.



## Positioning Cylinders

### PFLF Series

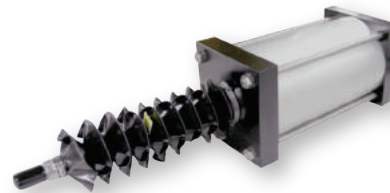
Ideal for applications where the cylinder can touch down on a part and provide position feedback, thus gauge a part. Can also be used in conjunction with a PCS for closed loop positioning.



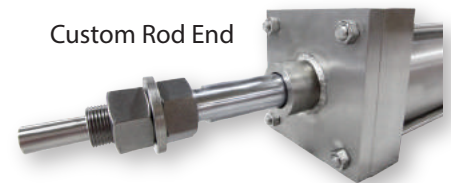
### SPCS-2T Position Controller

Flexible, cost effective motion control system that is used on a variety of pneumatic actuator bore sizes. Easily installed and configured and is ideal for applications where "on the fly" adjustments are needed.

## SPECIALS



Rod Boot



Custom Rod End



EN plated HH cylinders



Custom Mounts & Configuration

### Hydraulic Servo Ready



Hydraulic cylinder retrofit to air cylinder application

### EN plated Rod Lock



### Tight Tolerance Special Machining



# TRD DELIVERIES (F.O.B. Factory)

## SERIES

## DELIVERY SCHEDULE

TA, TD FM, TRA, MSE, MSR . . . . .	2-3 Days
HH & MH (Hydraulics) . . . . .	2-3 Days
BTB, TM, 3P . . . . .	2-3 Days
Air Boosters, Air/Oil Tanks, BTP . . . . .	2-3 Days
TAS . . . . .	2-3 Days
SS . . . . .	2-3 Days
SS-MSE, SS-MSR . . . . .	3-5 Days
RS . . . . .	3-4 Days
TC . . . . .	3-5 Days
PFLF . . . . .	7-10 Days
TRD Switches . . . . .	1 Day
Rod Clevis, Pins & Mounts, Alignment Couplers . . . . .	1 Day
Balluff Strokemaster . . . . .	7-10 Days
Balluff Micropulse Transducers . . . . .	10-12 Days

STANDARD OPTIONS INCLUDED IN ABOVE DELIVERIES

## OPTIONS WITH EXTENDED DELIVERY

SE, SR (with catalog spring rates) . . . . .	3-5 Days
MT1S, MT2S (one-piece steel mount) . . . . .	3-5 Days
MP4SP Mounts . . . . .	3-5 Days
Special Piston Materials (PMC & PMD options) . . . . .	3-5 Days
EN Plating Option . . . . .	5-7 Days
Non-Catalog Welded Mounts (bore sizes up to 12.00") . . . . .	5-7 Days
LTE Seal Option . . . . .	15-20 Days
Hydraulic Rod Lock . . . . .	20-40 Days

## RUSH SERVICE

RUSH SERVICES ARE AVAILABLE FOR ALL TRD PRODUCTS. CONTACT YOUR LOCAL TRD DISTRIBUTOR FOR DETAILS.

Your Local Distributor:



Worldwide distribution means there is a professional stocking Bimba distributor nearby ready to service your needs.



# TRD

TRD Manufacturing Company  
 10914 North 2nd Street  
 Machesney Park, Illinois 61115-1400  
 Phone: 815-654-7775  
 Fax: 815-654-0690  
 Email: sales@trdmfg.com  
 www.trdmfg.com



Bimba Manufacturing Company  
 P.O. Box 68  
 Monee, Illinois 60449-0068  
 Phone: 708-534-8544  
 Toll Free: 800-44-BIMBA  
 Fax: 708-235-2014  
 Email: support@bimba.com  
 www.bimba.com