

INDUCTIVE SENSORS

C23 SERIES FULL INOX EXTREME

POWERFUL SENSORS
IN STAINLESS STEEL FOR LIMITED SPACES

A
Swiss
Company

CONTRINEX
SENSORS SAFETY RFID

FLAT, RUGGED, EFFICIENT SOLUTIONS FOR HARSH ENVIRONMENTS

For applications where the environment is harsh and space is scarce, but long operating distances are still indispensable, Contrinex has developed the C23 Full Inox series of flat, full-metal inductive sensors with IO-Link and ASIC technology.

- Extremely robust, small and slim stainless steel housing (20 mm x 32 mm x 8 mm)
- Vibration and shock resistant
- Factor 1 on steel and aluminum
- Long operating distance: 7 mm
- Enclosure rating IP 68 & IP 69K
- Embeddable
- Connection via PUR cable or S8 pigtail connector

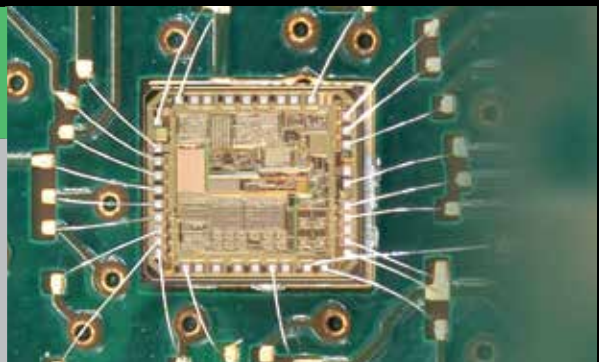


SENSORS

PART REFERENCE	ART. NO.	Ø	SN	MOUNTING	CONNECTION	OUTPUT
DW-AD-701-C23	320-420-704	C23	7	Embeddable	Cable	NPN NO
DW-AD-703-C23	320-420-705	C23	7	Embeddable	Cable	PNP NO
DW-AV-701-C23-276	320-420-706	C23	7	Embeddable	S8	NPN NO
DW-AV-703-C23-276	320-420-707	C23	7	Embeddable	S8	PNP NO

POWERFUL CONTRINEX ASIC FROM THE WORLD LEADER IN SENSOR ASIC TECHNOLOGY

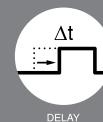
- Guaranteed operating distances
- Quick installation due to minimal variation between sensors
- Excellent temperature compensation
- Longer lifetime especially in applications with temperature changes and vibrations



IO-Link

SMART COMMUNICATION WITH CONTRINEX SENSORS

- Continuous monitoring of process data
- Continuous diagnosis of sensor status
- Advanced parameter settings
- Easy check of sensor ID, to ensure the right sensor is at the right place



Terms of delivery and right to change design reserved.

HEADQUARTERS

CONTRINEX AG Industrial Electronics
route André Piller 50 - PO Box - CH 1762 Givisiez - Switzerland
Tel: +41 26 460 46 46 - Fax: +41 26 460 46 40
Internet: www.contrinex.com - E-mail: info@contrinex.com

www.contrinex.com