

Vaculex ParcelLift

Unloading trucks and containers



Vaculex ParcelLift – is a unique and ergonomic vacuum lift designed for the loading and unloading of loose loaded cargo into trucks and containers. Vaculex ParcelLift handles a great variety of goods in size, shape and weight up to 40 kg. The Vaculex ParcelLift can be fully integrated into many varieties of telescopic conveyors both factory fitted or retrofitted at customers premises. The Vaculex ParcelLift maximises the available working height by sensing the available headroom and adjusting its height automatically making this the perfect solution for working in confined spaces with low headroom. It allows the user to grip an item from any side, turn it 360° and release it as required. Vaculex ParcelLift creates the optimal working experience for the operator, it is easy to work with and requires minimal training. To ensure maximum performance the ParcelLift has been engineered with low weight/high strength materials such as carbon fibre composites and aluminium. Vaculex ParcelLift is easy to work with and your high working speed and productivity are maintained or increased, at the same time as the risk for work injuries is being reduced.

Typical users are within logistics, transportation, warehouses, mail order, air cargo and other businesses where frequent and fast lifting activities take place.

Vaculex is a world leading manufacturer of lifting equipment based on vacuum technology. Vaculex develops and manufactures vacuum lifters for industries with high demands on ergonomics and efficiency.

Benefits

- Excellent Ergonomics
- Increases Productivity
- Improves Efficiency
- Removes the Risk for Injury
- Reliable and Safe
- User-friendly

References

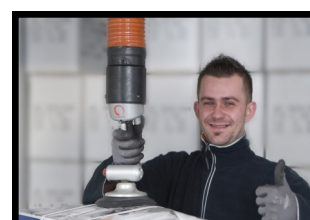
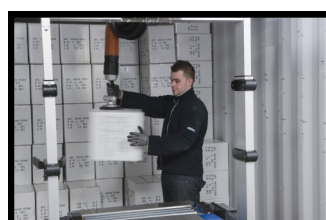
Keith McLean, Warehouse Manager & Ian Lancaster, Logistics Manager, Draper Tools, UK.

"After seeing the solution the decision was easy. Our prime consideration has been a question of ergonomics rather than speed. Having said that we are using fewer people to unload a container so there is definitely a financial benefit too."

Gunnar Tunmats, Safety Officer and Operator, Posten Logistik Örebro, Sweden.

"Vaculex ParcelLift is great to work with".

For more references, please visit vaculex.com.



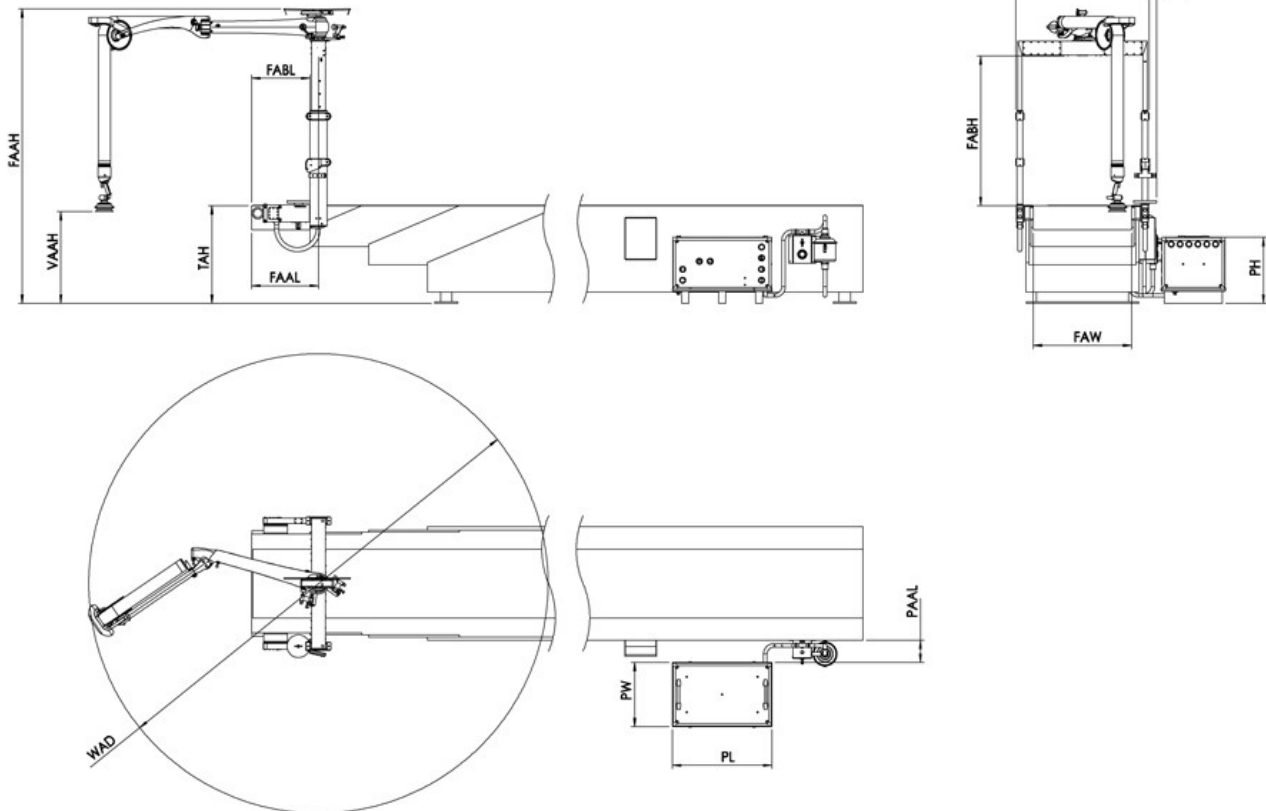
Vaculex Parcelift

Technical Specifications



Vaculex Parcelift Crane, Frame and Lift Unit	
Recommended max load	40 kg
Safety factor (Attachment force/Lifting force)	min 2.3
Suction foot dimension*	Ø150 mm
Crane weight	8.8 kg
Lifter weight	5.8 kg
Total weight	76 kg
Sound level 1 m from control handle	54-65 dBA
Vaculex Parcelift Pump Unit	
Power	2.4 kW 50Hz / 3.0 kW 60 Hz
Voltage	190-255/330-440 V at 50 Hz 190-290/330-500 V at 60 Hz
Pump Unit weight	107 kg
Sound Level 1 m from Pump unit	63 dBA

* Several alternative suction feet are available



Dimension (mm)														
Model	WAD	FAW*	FBW	FCW	VAAH*	TAH*	FAAH*	FABH	FAAL	FABL	PL	PW	PH	PAAL
ACF0860		860	1161											
ACF0906		906	1227		Max		Max	Max						
ACF1060		1060	1427		1860		2515	1308						
ACF1106	4000	1106	1427	56	Min	800	Min	Min	601	528	870	560	575	min 300
ACF1260		1260	1627		1630		2043	836						
ACF1306		1306	1627											

* depending on the dimensions of the telescopic conveyor belt

Head Office Sweden
Vaculex AB
 Aminogatan 20
 SE-431 53 MÖLNDAL
 SWEDEN
 +46 (0)31 670100
 info@vaculex.com

Sales Office UK
Vaculex UK Ltd
 6th Floor Trigate
 210-222 Hagley Road West
 Birmingham B68 0NP
 United Kingdom
 +44 (0)121 359 3000
 info.uk@vaculex.com

Sales Office USA
Vaculex USA LLC
 605 Philip Davis Drive, Suite 1
 Charlotte NC 28217
 United States
 +1 704 527 5052
 info.us@vaculex.com