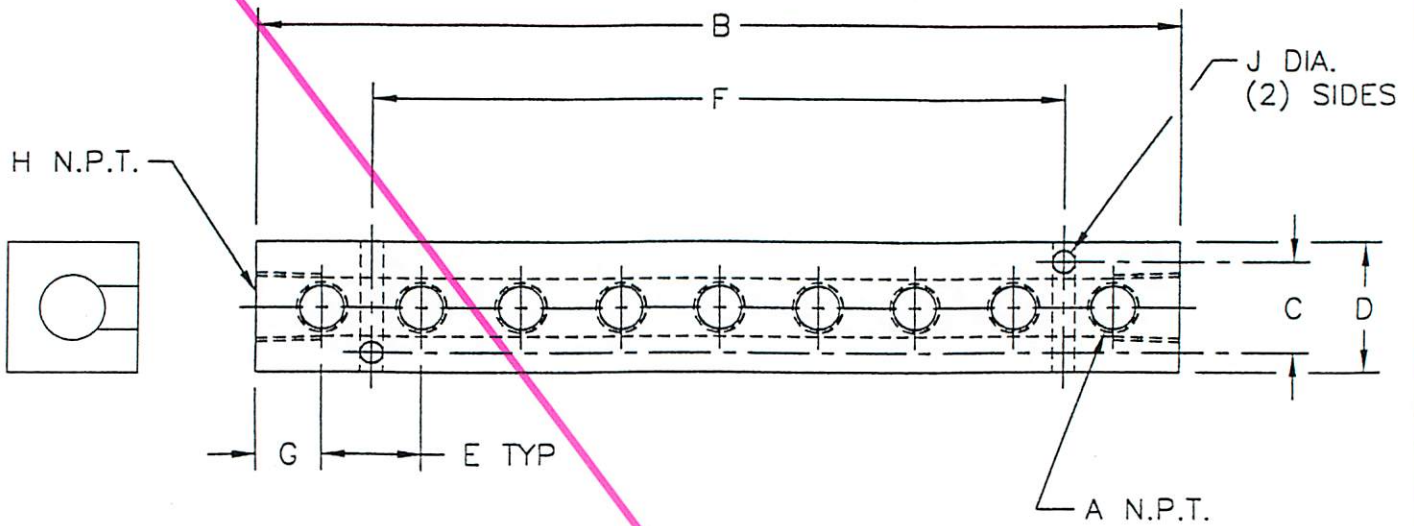
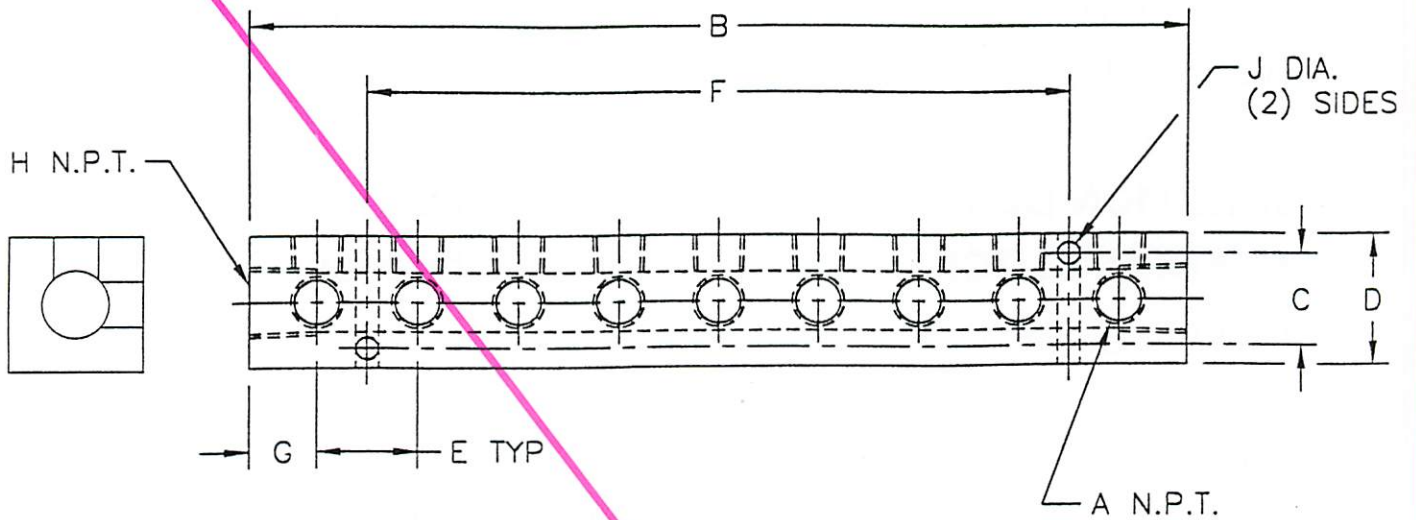


MANIFOLD WITH 10 PORTS



PART NO.	A	B	C	D	E	F	G	H	J
AM-1-10	1/8	7.75	.70	1.00	.75	6.00	.50	1/4	.17
AM-2-10	1/8	9.38	.88	1.25	.88	7.00	.75	3/8	.20
AM-3-10	1/4	9.38	.88	1.25	.88	7.00	.75	3/8	.20
AM-4-10	1/4	10.75	1.12	1.50	1.00	8.00	.88	1/2	.20
AM-5-10	3/8	10.75	1.12	1.50	1.00	8.00	.88	1/2	.20
AM-6-10	1/8	15.25	.70	1.00	1.50	12.00	.88	1/4	.17
AM-7-10	1/8	15.25	.88	1.25	1.50	12.00	.88	3/8	.20
AM-8-10	1/4	15.25	.88	1.25	1.50	12.00	.88	3/8	.20
AM-9-10	1/4	15.25	1.12	1.50	1.50	12.00	.88	1/2	.20
AM-10-10	3/8	15.25	1.12	1.50	1.50	12.00	.88	1/2	.20

MANIFOLD WITH 10 PORTS 90°



PART NO.	A	B	C	D	E	F	G	H	J
90-AM-1-10	1/8	7.75	.70	1.00	.75	6.00	.50	1/4	.17
90-AM-2-10	1/8	9.38	.88	1.25	.88	7.00	.75	3/8	.20
90-AM-3-10	1/4	9.38	.88	1.25	.88	7.00	.75	3/8	.20
90-AM-4-10	1/4	10.75	1.12	1.50	1.00	8.00	.88	1/2	.20
90-AM-5-10	3/8	10.75	1.12	1.50	1.00	8.00	.88	1/2	.20
90-AM-6-10	1/8	15.25	.70	1.00	1.50	12.00	.88	1/4	.17
90-AM-7-10	1/8	15.25	.88	1.25	1.50	12.00	.88	3/8	.20
90-AM-8-10	1/4	15.25	.88	1.25	1.50	12.00	.88	3/8	.20
90-AM-9-10	1/4	15.25	1.12	1.50	1.50	12.00	.88	1/2	.20
90-AM-10-10	3/8	15.25	1.12	1.50	1.50	12.00	.88	1/2	.20