

B80/110 RODLESS ACTUATORS

160 Product Features

160 Features and Benefits

161 How it Works

161 Materials of Construction

162 How it's Used

162 Application Ideas
162 Target Applications
162 Drive Options
162 Advantages

163 How to Specify

163 Dimensions
164 Specifications

165 How to Accessorize

165 Motors and Drives
165 Reverse Parallel Motor Mounts
166 Linear Scale
166 Mounting Clamps

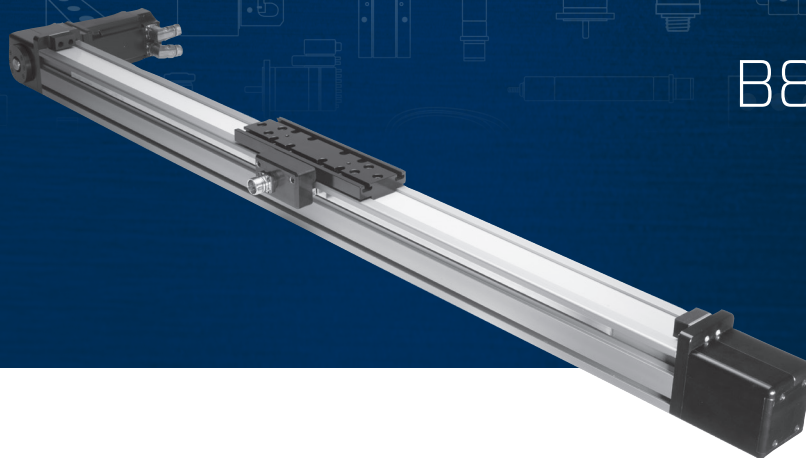
167 How to Order

168 How to Repair

168 B80 Take-up End Drive
168 B80 Single Shaft Drive
168 B80 EZ Drive
168 B80 EZ Double Drive
169 B80 Double Shaft Drive
170 B110 Take-up End Drive
170 B110 Single Shaft Drive
171 B110 EZ Drive
171 B110 EZ Double Drive
172 B110 Double Shaft Drive
172 B110 Reducer Drive

173 How to Customize

173 Switches
173 Air/Purge Ports
173 Protection
173 Motor Mounting
173 Customer-Requested Holes and Dowel Pins



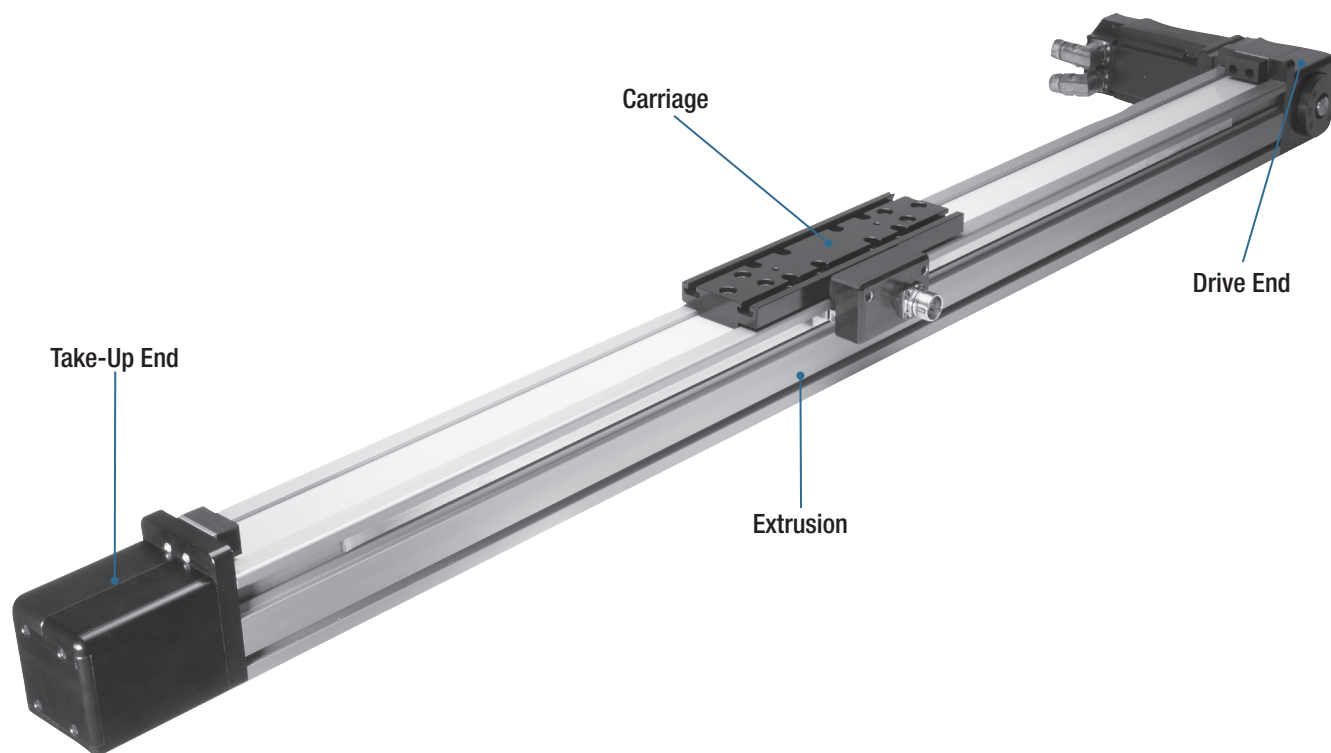
B80/110 RODLESS ACTUATOR

The B80 is Bimba's single rail belt driven electric linear actuator, built for use in many different industries and applications.

More robust and internally rigid, the B80 picks up where the B27 leaves off. Well-suited for many of the same pick & place and sorting applications recommended for the B27, the B80 has the additional robustness to perform effortlessly in higher demand applications including loading, parts transfer, stacking and similar applications where more muscle and long life are paramount.

Built using the highest quality components throughout its construction, the B80 is Bimba's best-selling rodless actuator due to its unique design and resultant capability. For use in general purpose applications and custom designs, the B80 combination of high thrust capability is on par with a traditional ballscrew actuator. This enhanced thrust capability, when combined with the high speed motion offered by its high-precision steel reinforced ARC belt design, provides four times the performance of similar sized competitive actuators. The end result is belt actuator speeds with ballscrew load and moment capabilities, lending itself to a unique kind of hybrid actuator that offers your application the best of both worlds.

PRODUCT FEATURES



The B80 is Bimba's most popular belt-driven electric rodless actuator thanks to its unrivaled load carry characteristics. The B80's unique arc-belt design offers customers ballscrew-like operation with belt-like speed, leading to the ultimate "hybrid" performance.

The B110 is Bimba's most robust belt-driven electric rodless actuator. The B110 takes advantage of an extrusion that has nearly twice the area of the B80, as well as a larger carriage, bearing system, belt pulley, and take-up end, which all combine to offer extreme values of dynamic load capacity and moment loading.

FEATURES AND BENEFITS

High Precision Steel Reinforced Belt:

- Arc-belt power design
- Reduced noise and vibration
- Zero backlash
- Self-aligning
- No cogging
- Smooth, precise motion
- Ideal for high speed, high thrust applications
- Highest thrust per unit size (B80)
- High repeatability to 0.001"
- Long lengths, up to 100 ft (30m)
- Outstanding repeatability

Square Aluminum Extrusion:

- Heavy duty 6061 aluminum extrusion
- Heavy duty carriages: 7075 aluminum
- 25% stronger extrusion
- Supports stops and bearings
- Better fit in tight applications (B80)
- Promotes long life

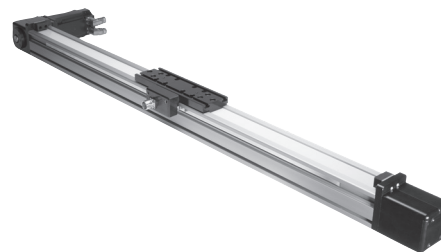
Built-in Linear Ball Rail Guide:

- Maintenance free
- Self-lubricating
- Low friction
- Smooth, quiet operation
- Long life expectancy
- B80 supports high loads and high moment loads
- B110 supports extreme loads and extreme moment loads

Optional Built-in Gear Reducer:

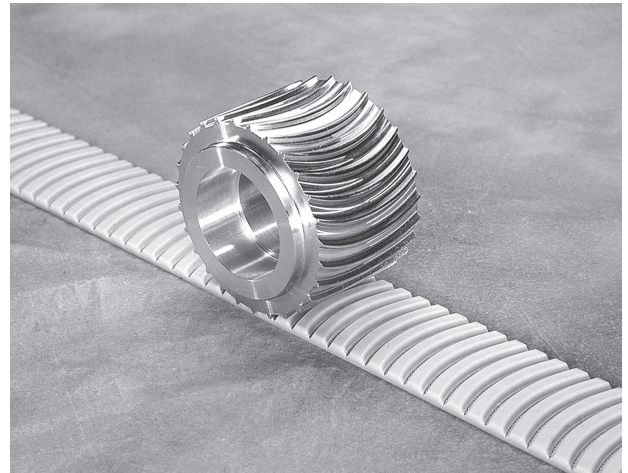
- No motor interface required
- No shaft coupling needed
- Made to fit your motor
- Reduces overall length
- Easier tuning
- One-stop shopping

B80/110



Bimba B80 and B110 rodless actuators use a steel reinforced polyurethane arc-belt that wraps around an internal, specially machined arc-drive pulley mechanism on the drive end. This is connected to a drive shaft that is coupled to an external motor shaft, and together provides the rotational motion and torque necessary to rotate the pulley and traverse the belt attached to the pulley.

On the opposite end, which is known as the take-up end, the B80/110 uses an equally robust take-up pulley. This pulley works in conjunction with a similarly matched take-up slide and take-up bearing to provide ample support for the other end of the belt as the motor shaft rotates and provides the rotational torque needed to transform the rotational motion into linear motion. The resultant linear motion pulls the carriage—which is physically connected to the arc-belt—and its load along the length of the rodless actuator under direct, defined, and precise control of the user.



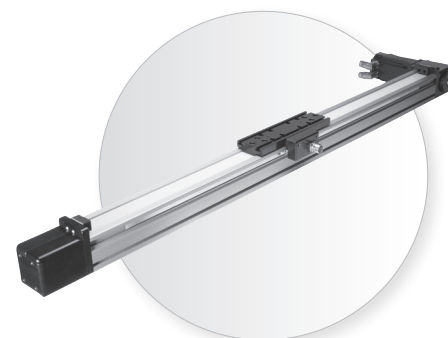
B80 ARC-BELT AND ARC-PULLEY SYSTEM

MATERIALS OF CONSTRUCTION

Body Material:	Aluminum
End Caps:	Aluminum
Carriage:	7075 Aluminum
Belt:	Steel Reinforced Polyurethane

APPLICATION IDEAS

- Pick & Place
- Sorting
- Loading
- Lifting
- Pressing
- Stacking
- Insertion
- Clamping
- Parts Transfer
- Labeling
- Machine Tool
- Conveyor



TARGET APPLICATIONS

The B80 is intended for heavy-duty industrial applications that require flexible, long, or even extreme distance, as well as high speed motion with robust load and moment loading capacity. When your application calls for up to 30m (~100 ft) of stroke with up to 850 lbs (~3781N) and speed capability in the 5m/sec (~200"/sec) range, the B80 offers you a canned solution that also offers you maximum value.

Similarly, the B110 is intended for maximum-duty industrial applications that require flexible, long, or even extreme working distance, with high speed motion and extreme load and moment loading capacity. When your application calls for the same stroke, thrust, and speed capabilities as the B80, but with dynamic loading capability exceeding 61500N (~14000 lbs), the B110 offers a unique solution in a standard offering.

Bimba electric actuators are the best option for applications that call for an alternative solution to a traditional pneumatic application, but still require force and load capability that mimics a pneumatic solution. As Bimba's flagship electric actuator, the B80/110 adapts alongside your business as an easy-to-use, long-lasting, and tough electric actuator that exceeds the competition in performance, value, and life. It's the easy choice for hard solutions.

DRIVE OPTIONS

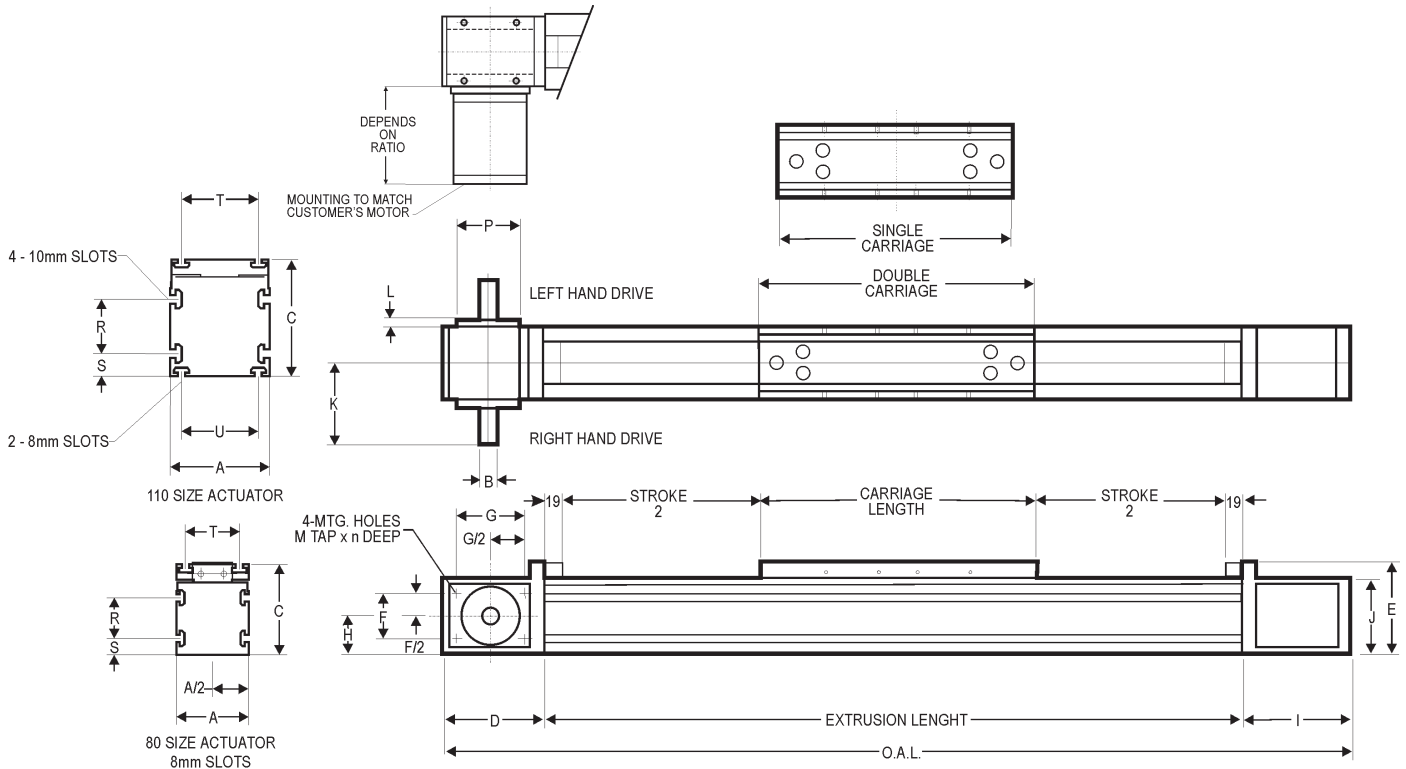
With numerous drive interfaces, ranging from a single or double standard shaft input to our integral reducer drive, the choice is yours to select the option that works best for you. Bimba's many stepper and servo motors make it easier than ever to configure an electric actuator that best meets the needs of even your most demanding applications. High load and thrust applications become an afterthought when adding the optional reducer drive option that, when coupled with a servo motor, provides the necessary torque to move high load applications.

ADVANTAGES

FEATURE	ADVANTAGE	BENEFIT
Carriage constructed of high-strength 7075 aluminum	Offers enhanced strength and robustness over the competitor	Less deflection and increased load and moment loading capability per carriage size
Self-lubricating linear guides	Minimized maintenance	Worry- and maintenance-free long life, even in applications that require 24/7 motion
Integral Reducer Drive (optional)	Offers increased performance using embedded gear reducer	Move larger loads, improve inertia matching, and complete that using an aesthetically pleasing, cost-effective solution
ARC-Power Belt	25% higher thrust leads to higher loading capability	Ball screw type thrust with belt drive speed ability

DIMENSIONS

Key specification information for the B80/110 is given below. For additional specification information, contact Bimba Customer Service at cs@bimba.com, or 800.44.BIMBA (800.442.4622).



DIMENSIONS										
ACTUATOR	A	B	C	D	E	F	G	H	I	J
B80	80	19	100	111	102	31.75	69.85	40	121	82.5
B110	110	20	129	150	127	38	101.6	57.5	160	114.3

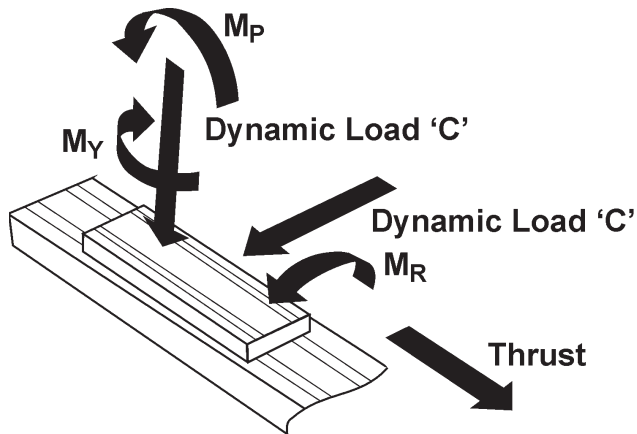
DIMENSIONS										CARRIAGE LENGTH	
ACTUATOR	K	L	M	N	P	R	S	T	U	SINGLE	DOUBLE
B80	90.25	9.5	M6	8	66.68	45	18	55	-	190	260
B110	111.8	9.3	M8	12	88.9	60	25	85	85	210	305

O.A.L. = "D" + "I" + 38(mm) + Stroke(mm) + Carriage Length

NOTE: 8mm slots in carriage

HOW TO SPECIFY

SPECIFICATIONS



LINEAR ACTUATOR	EXTRUSION	
	MOMENT OF INERTIA	
	I _x (cm ⁴)	I _y (cm ⁴)
B80	146	219
B110	643	768

Straightness 0.3175mm per 300mm of length
Twist: 1/4" per 300mm, 3" maximum per 6m length

LINEAR ACTUATOR	LEAD CONSTANT (mm/rev.)	MAXIMUM INPUT TORQUE NM (in-lbs)	BELT		CARRIAGE LENGTH (mm)	DYNAMIC LOAD CAPACITY N (lbs)	DYNAMIC MOMENT CAPACITY		
			MAXIMUM FORCE N (lbs)	ELASTIC LIMIT N (lbs)			M _R (ROLL) NM (in-lbs)	M _p (PITCH) NM (in-lbs)	M _y (YAW) NM (in-lbs)
B80	200	90	3750 (843)	7500 (1686)	190	21000 (4720)	310 (2745)	270 (2390)	270 (2390)
					260	42000 (9440)	620 (5487)	1400 (12390)	1400 (12390)
B110	270	120	3750 (843)	7500 (1686)	210	30750 (6913)	530 (4690)	460 (4071)	460 (4071)
					305	61500 (13825)	1060 (9381)	2750 (24338)	2750 (24338)

Straightness: 0.3175mm per 300mm of length
Twist: 1/4" per 300mm, 3" maximum per 6m length

Inertia (lb-in-sec²):

B80 Actuator - A Carriage, $J = (23 + \text{Stroke mm} \times 0.01) \times 10^{-4} \times 8.85$
 B80 Actuator - B Carriage, $J = (35 + \text{Stroke mm} \times 0.01) \times 10^{-4} \times 8.85$
 B110 Actuator - A Carriage, $J = (68 + \text{Stroke mm} \times 0.02) \times 10^{-4} \times 8.85$
 B110 Actuator - B Carriage, $J = (100 + \text{Stroke mm} \times 0.02) \times 10^{-4} \times 8.85$

Weight:

B80 = 9kgs + (0.0114 kgs/mm)
 B110 = 17kgs + (0.21 kgs/mm)

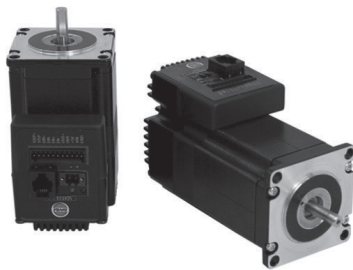
MOTORS AND DRIVES

Bimba motors are available to use as the rotary drive mechanism of the B80/110 Series. With a complete array of stepper and servo motors available in stock, Bimba has a motor*-drive solution that meets many demanding applications.

Configuring your motor and creating your first motion profile program is easier than ever with Bimba's intuitive and icon based IQ® suite of motion software. With our complete software suite available for free download from the Bimba website, there is no additional cost to your motion project. All Bimba stepper and servo programming software uses the same IQ® programming software, greatly reducing the learning curve. Existing programs can be easily shared or adapted among the two motor technologies.

See the Motors and Controls for Bimba's wide selection of available motors and motor drives.

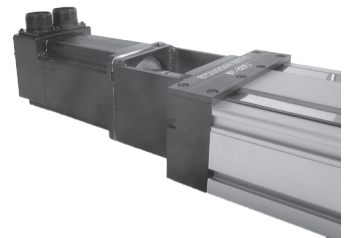
*Contact Bimba's Customer Service team for help in crossing your motor to a Bimba motor.



INTELLIMOTOR®
ITM-23Q-2-EIP-E-M12



AC STEPPER MOTOR
MTR-AC23T-753-S



AC SERVO MOTOR

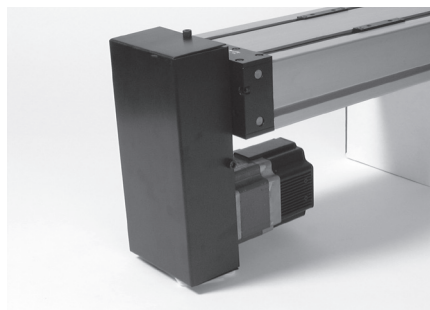
General Accessories

- T-bars for mounting to the carriages
- Mechanical and proximity limit switches
- Torque tubes for dual axis gantry style applications
- Adapter plates for creating most any X-Y-Z configuration

REVERSE PARALLEL MOTOR MOUNTS

In cases where space savings are critical, or in which gaining mechanical advantage via a geared drive belt pulley leads to an improved design, Bimba offers reverse parallel motor mounts. They are offered for use with nearly any Bimba motor or customer-provided motor. The option to mount in either the top or bottom position for the B80/110 actuator adds flexibility.

- Adapts to your motor dimensions
- Available in reduction ratios of up to 2:1



BIMBA REVERSE PARALLEL REDUCTION MOUNTS

HOW TO ACCESSORIZE

LINEAR SCALE

In extreme cases where precision beyond the normal tight accuracy of the B80/110 is desired, Bimba offers external linear scales. They are capable of providing extended position precision to as tight as 10µm. These scales are composed of a reading head and external scale. Linear scales are available in incremental or absolute versions which can be added to your actuator as an additional component when included in the final part number.



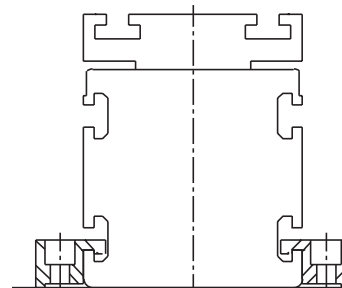
EXTERNAL LINEAR SCALE

MOUNTING CLAMPS

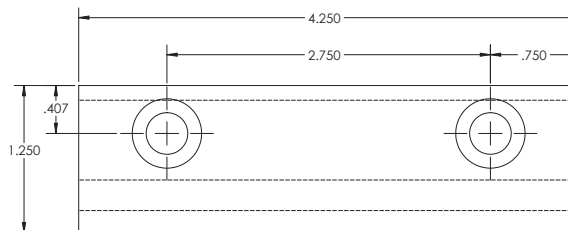
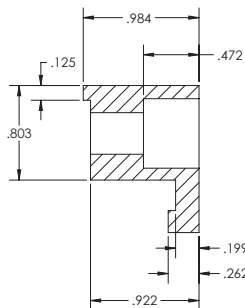
To secure an actuator to the machine frame, hold-down clamps are available. They are designed to fit perfectly in the extruded body actuator T-channel. Appropriate sized clamps are available for the B80/110 actuator, as well as all of Bimba's electric actuators.



BIMBA B80/110 CLAMP
CL-80-39



B80/110 CLAMP DRAWING



CL-110-39 CLAMP SIDEVIEW AND DIMENSIONS

HOW TO ORDER

The model numbers of the B80/110 Series rodless actuators consist of an alphanumeric cluster designating product type, carriage type, stroke length, drive type, drive location, gear ratio (optional), external scale (optional), and other optional components that together make up the complete part number to use in ordering. Use the ordering information below to build a valid part number.

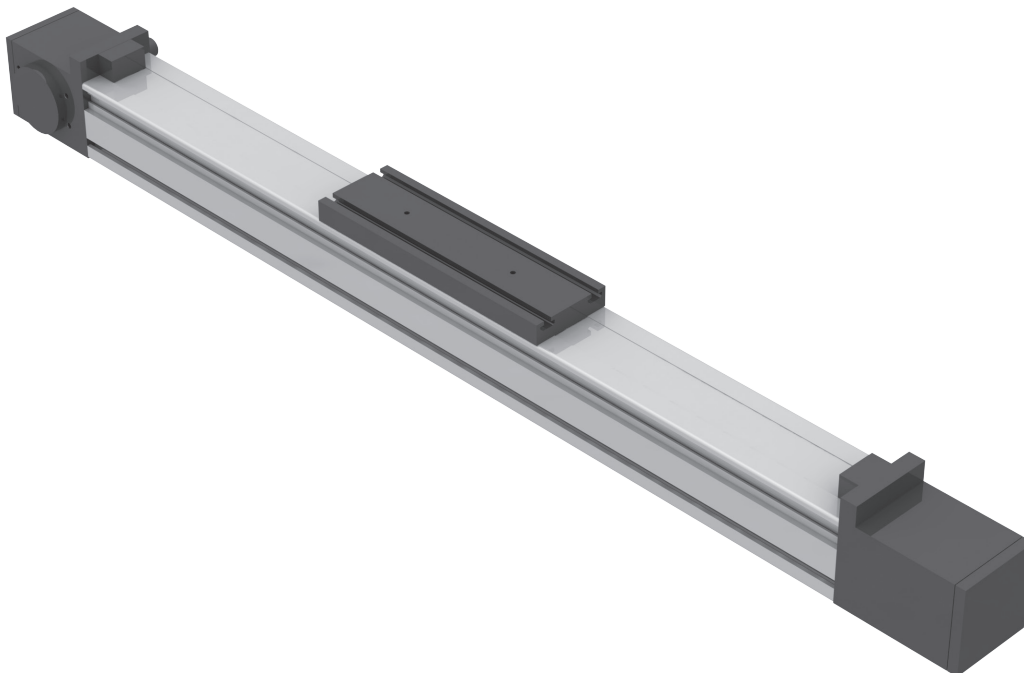
An example of a basic B80 unit with length 600mm, EZ drive, and no scale is shown below.

CARRIAGE				DRIVE		RATIO	EXTRA CARRIAGES		PROTECTION		PURGE PORT ¹	
Actuator	Carriage Type	Number of Bearing Blocks	Carriage Length	SD	Single Drive		0	None	00	Standard	P0	None
80	A	1	190	DS	Double Drive	XX	1	1 Extra	Z1	Corrosion-Resistant	PL	Left
	B	2	260	RD	Reducer Drive		2	2 Extra	SS	Stainless Steel	PR	Right
110	A	1	210	DR	Reducer Double Drive	XX					PB	Both
	B	2	305	EZ	EZ Drive ²							
				ED	EZ Double Drive ²							

ACTUATOR	STROKE	HAND ¹	SCALE ¹	DISTANCE	KEYWAY
80	XXXX (mm)	L Left Hand	N No Scale	XXXX (mm)	Y Yes
110	Max. length: 12000mm	R Right Hand	L Left	190-1000mm	N No
			R Right		

¹ Referenced from drive end with carriage on top.

² EZ option standard shaft diameter: 1" / 25.4mm (B80); 1.25" / 31.75mm (B110)



NOTE: If a motor or gearbox adapter is required, please refer to the Adapters section of the Accessories chapter in this catalog.

HOW TO REPAIR

Bimba B80 Series electric actuators are repairable. A list of the individual components is given below that together make up the B80 electric actuator.

Please use the linear actuator serial number located at the drive end for all inquiries, along with the original purchase order number (if available). Describe the part required along with part number below. Contact Bimba Customer Service at 800-442-4622 (800-44-BIMBA) or e-mail cs@bimba.com.

B80 TAKE-UP END DRIVE

QUANTITY	PART NO.	PART DESCRIPTION
1	B80-321	Take-up End
1	B80-322	Take-up End
1	B80-316	End Cover
1	B80-25	Take-up Pulley
1	B80-26	Take-up Shaft
2	B80-27	Slide Bars
2	B80-44	Bearing
2	S110-24	Retainer
1	B80-13	Double Shaft Drive
1	B80-10-XX	Reducer Long Shaft

B80 EZ DRIVE

QUANTITY	PART NO.	PART DESCRIPTION
1	B80-321	Take-up End
1	B80-322	Take-up End
1	B80-316	End Cover
1	B80-25	Take-up Pulley
1	B80-26	Take-up Shaft
2	B80-27	Slide Bars
2	B80-44	Bearing
2	S110-24	Retainer
1	B80-314	Drive End
1	B80-313	EZ Mount End
1	B80-317	Retainer Plate
1	B80-118	EZ Single Shaft
1	B80-318	EZ End Cover
1	B80-19	Drive Pulley
1	B80-40	Bearing
1	B110-45	Retainer
1	B80-117	Clamp Collar
1	B80-13	Double Shaft Drive
1	B80-10-XX	Reducer Long Shaft

B80 SINGLE SHAFT DRIVE

QUANTITY	PART NO.	PART DESCRIPTION
1	B80-321	Take-up End
1	B80-322	Take-up End
1	B80-316	End Cover
1	B80-25	Take-up Pulley
1	B80-26	Take-up Shaft
2	B80-27	Slide Bars
2	B80-44	Bearing
2	S110-24	Retainer
2	B80-314	Drive End
2	B80-317	Retainer Plate
1	B80-18	Single Shaft Drive
1	B80-19	Drive Pulley
2	B80-40	Bearing
1	B80-45	PL020x047FL
2	B110-45	Retainer
1	B80-13	Double Shaft Drive
1	B80-10-XX	Reducer Long Shaft

B80 EZ DOUBLE DRIVE

QUANTITY	PART NO.	PART DESCRIPTION
1	B80-321	Take-up End
1	B80-322	Take-up End
1	B80-316	End Cover
1	B80-25	Take-up Pulley
1	B80-26	Take-up Shaft
2	B80-27	Slide Bars
2	B80-44	Bearing
2	S110-24	Retainer
1	B80-314	Drive End
2	B80-313	EZ Mount End
1	B80-317	Retainer Plate
1	B80-318	EZ End Cover
1	B80-19	Drive Pulley
1	B80-40	Bearing
1	B80-113	EZ Double Drive
1	B110-45	Retainer
1	B80-117	Clamp Collar
1	B80-13	Double Shaft Drive
1	B80-10-XX	Reducer Long Shaft

Bimba B80 Series electric actuators are repairable. A list of the individual components is given below that together make up the B80 electric actuator.

Please use the linear actuator serial number located at the drive end for all inquiries, along with the original purchase order number (if available). Describe the part required along with part number below. Contact Bimba Customer Service at 800-442-4622 (800-44-BIMBA) or e-mail cs@bimba.com.

B80 DOUBLE SHAFT DRIVE

QUANTITY	PART NO.	PART DESCRIPTION
1	B80-321	Take-up End
1	B80-322	Take-up End
1	B80-316	End Cover
1	B80-25	Take-up Pulley
1	B80-26	Take-up Shaft
2	B80-27	Slide Bars
2	B80-44	Bearing
2	S110-24	Retainer
2	B80-314	Drive End
2	B80-317	Retainer Plate
1	B80-19	Drive Pulley
2	B80-40	Bearing
2	B110-45	Retainer
1	B80-45	Bearing
1	B80-13	Double Shaft Drive
1	B80-10-XX	Reducer Long Shaft

B80 DOUBLE SHAFT DRIVE

QUANTITY	PART NO.	PART DESCRIPTION
1	B80-321	Take-up End
1	B80-322	Take-up End
1	B80-316	End Cover
1	B80-25	Take-up Pulley
1	B80-26	Take-up Shaft
2	B80-27	Slide Bars
2	B80-44	Bearing
2	S110-24	Retainer
2	B80-314	Drive End
1	B80-317	Retainer Plate
1	B80-19	Drive Pulley
2	B80-40	Bearing
1	B80-45	Bearing
1	B80-13	Double Shaft Drive
1	B80-10-XX	Reducer Long Shaft
1	B80-09	Reducer Adapter Plate

HOW TO REPAIR

Bimba B110 Series electric actuators are repairable. A list of the individual components is given below that together make up the B110 electric actuator.

Please use the linear actuator serial number located at the drive end for all inquiries, along with the original purchase order number (if available). Describe the part required along with part number below. Contact Bimba Customer Service at 800-442-4622 (800-44-BIMBA) or e-mail cs@bimba.com.

B110 TAKE-UP END DRIVE

QUANTITY	PART NO.	PART DESCRIPTION
1	B110-21	Take-up End
1	B110-22	Take-up End
1	B110-23	End Plate
2	B110-24	Covers
1	B110-25	Take-up Pulley
1	B110-26	Take-up Shaft
2	B110-27	Slide Bars
2	B110-40	Bearing
4	M4 x 10	Setscrews
2	B110-45	Retainer
1	B110-01	Extrusion
1	B110-02	Linear Rail
2	B110-42	Bumper
1	B110-16	End Plate
2	B110-20	End Plate
1	B110-03	Belt
2	B110-04	Belt Clamp
8	B110-46	Plastic Plug
2	B110-48	Magnet
1	B110-31-30	Carriage
2	B110-05	Linear Bearing

B110 SINGLE SHAFT DRIVE

QUANTITY	PART NO.	PART DESCRIPTION
1	B110-21	Take-up End
1	B110-22	Take-up End
1	B110-23	End Plate
4	B110-24	Covers
1	B110-25	Take-up Pulley
1	B110-26	Take-up Shaft
2	B110-27	Slide Bars
2	B110-40	Bearing
4	M4 x 10	Setscrews
2	B110-45	Retainer
2	B110-14	Drive Plate
1	B110-17	Retainer
1	B110-18	Drive Shaft
1	B110-19	Drive Pulley
2	B110-41	Bearing
1	B110-43	Transtorque
1	B110-44	Retainer Ring
1	B110-01	Extrusion
1	B110-02	Linear Rail
2	B110-42	Bumper
1	B110-16	End Plate
2	B110-20	End Plate
1	B110-03	Belt
2	B110-04	Belt Clamp
8	B110-46	Plastic Plug
2	B110-48	Magnet
1	B110-31-30	Carriage
2	B110-05	Linear Bearing

Bimba B110 Series electric actuators are repairable. A list of the individual components is given below that together make up the B110 electric actuator.

Please use the linear actuator serial number located at the drive end for all inquiries, along with the original purchase order number (if available). Describe the part required along with part number below. Contact Bimba Customer Service at 800-442-4622 (800-44-BIMBA) or e-mail cs@bimba.com.

B110 EZ DRIVE

QUANTITY	PART NO.	PART DESCRIPTION
1	B110-21	Take-up End
1	B110-22	Take-up End
1	B110-23	End Plate
2	B110-24	Covers
1	B110-25	Take-up Pulley
1	B110-26	Take-up Shaft
2	B110-27	Slide Bars
2	B110-40	Bearing
4	M4 x 10	Setscrews
2	B110-45	Retainer
1	B110-18	Shaft - Single
1	B110-14	Drive Plate
1	B110-19	Drive Pulley
1	B110-14	Side Plate
1	B110-17	Retainer
1	B110-41	Bearing
1	B110-47	EZ Drive Clamp Collar
1	B110-44	Retainer Ring
1	B110-01	Extrusion
1	B110-02	Linear Rail
2	B110-42	Bumper
1	B110-16	End Plate
2	B110-20	End Plate
1	B110-03	Belt
2	B110-04	Belt Clamp
8	B110-46	Plastic Plug
2	B110-48	Magnet
1	B110-31-30	Carriage
2	B110-05	Linear Bearing

B110 EZ DOUBLE DRIVE

QUANTITY	PART NO.	PART DESCRIPTION
1	B110-21	Take-up End
1	B110-22	Take-up End
1	B110-23	End Plate
2	B110-24	Covers
1	B110-25	Take-up Pulley
1	B110-26	Take-up Shaft
2	B110-27	Slide Bars
2	B110-40	Bearing
4	M4 x 10	Setscrews
2	B110-45	Retainer
1	B110-13	Shaft - Double
1	B110-14	Drive Plate
1	B110-19	Drive Pulley
1	B110-14	Side Plate
1	B110-17	Retainer
2	B110-24	Cover Plate
1	B110-41	Bearing
1	B110-47	EZ Drive Clamp Collar
1	B110-44	Retainer Ring
1	B110-01	Extrusion
1	B110-02	Linear Rail
2	B110-42	Bumper
1	B110-16	End Plate
2	B110-20	End Plate
1	B110-03	Belt
2	B110-04	Belt Clamp
8	B110-46	Plastic Plug
2	B110-48	Magnet
1	B110-31-30	Carriage
2	B110-05	Linear Bearing

HOW TO REPAIR

Bimba B110 Series electric actuators are repairable. A list of the individual components is given below that together make up the B110 electric actuator.

Please use the linear actuator serial number located at the drive end for all inquiries, along with the original purchase order number (if available). Describe the part required along with part number below. Contact Bimba Customer Service at 800-442-4622 (800-44-BIMBA) or e-mail cs@bimba.com.

B110 DOUBLE SHAFT DRIVE

QUANTITY	PART NO.	PART DESCRIPTION
1	B110-21	Take-up End
1	B110-22	Take-up End
1	B110-23	End Plate
2	B110-24	Covers
1	B110-25	Take-up Pulley
1	B110-26	Take-up Shaft
2	B110-27	Slide Bars
2	B110-40	Bearing
4	M4 x 10	Setscrews
2	B110-45	Retainer
2	B110-14	Side Plate
2	B110-17	Retainer
1	B110-13	Double Shaft
1	B110-19	Drive Pulley
2	B110-41	Bearing
1	B110-43	Transtorque
2	B110-44	Retainer Ring
1	B110-01	Extrusion
1	B110-02	Linear Rail
2	B110-42	Bumper
1	B110-16	End Plate
2	B110-20	End Plate
1	B110-03	Belt
2	B110-04	Belt Clamp
8	B110-46	Plastic Plug
2	B110-48	Magnet
1	B110-31-30	Carriage
2	B110-05	Linear Bearing

B110 REDUCER DRIVE

QUANTITY	PART NO.	PART DESCRIPTION
1	B110-21	Take-up End
1	B110-22	Take-up End
1	B110-23	End Plate
2	B110-24	Covers
1	B110-25	Take-up Pulley
1	B110-26	Take-up Shaft
2	B110-27	Slide Bars
2	B110-40	Bearing
4	M4 x 10	Setscrews
2	B110-45	Retainer
2	B110-14	Drive Plate
1	B110-17	Retainer
1	B110-09	Reducer Adapter
1	B110-28	Reducer Single Drive
1	B110-19	Drive Pulley
1	B110-41	Bearing
1	B110-43	Transtorque
1	B110-01	Extrusion
1	B110-02	Linear Rail
2	B110-42	Bumper
1	B110-16	End Plate
2	B110-20	End Plate
1	B110-03	Belt
2	B110-04	Belt Clamp
8	B110-46	Plastic Plug
2	B110-48	Magnet
1	B110-31-30	Carriage
2	B110-05	Linear Bearing
1	B110-29	Reducer Double Drive

SWITCHES

Switches add versatility to your electric motion application. They can be used to provide end of stroke limits, count strokes, or communicate positioning to an outside source. Switches can provide safety to applications as well, preventing undesirable situations like runaways to prevent damage.

To learn more about Bimba's available switch selection, refer to the Switches section in this catalog.

AIR/PURGE PORTS

Air and purge ports are essential for actuators that operate in dirty applications. In both belt- and screw-driven actuators, ports keep dust and grime from egressing, protecting the internals of the actuator. Air and purge ports are recommended for use with Bimba's air preparation products.

When using purge ports, supply dry filtered air to the actuators in order to achieve optimal protection.

PROTECTION

Bimba offers several protection options for our actuators. Our primary options are Armoloy® and stainless steel. **Armoloy®** offers additional protection against moisture and dirt. It is used to coat the steel linear rail and bearings in a Bimba actuator. Armoloy® coating can also be applied to the aluminum extrusion upon request. **Stainless steel** works in conjunction with Armoloy® coatings, providing additional protection to the end caps and carriage.

Additional coatings are available upon request.

MOTOR MOUNTING

Motor mounts allow you to mount any motor to any actuator (within the actuator's rating). They give end users the ability to use Bimba electric actuators with the motor of their choosing. Careful considerations regarding torque limitations must be made when mounting a motor the actuator is not rated for.

To request custom motor mounting options, please supply Bimba with the following information: shaft diameter, shaft length, pilot diameter, pilot depth, bolt circle, and hole size.

CUSTOMER-REQUESTED HOLES AND DOWEL PINS

Bimba can provide custom holes and dowel pins to accommodate the customer's specific tooling and mounting holes.

For further customization, contact the factory.

The top of the page features a dark blue header with a repeating pattern of white line-art technical drawings of various mechanical components, including actuators, pistons, and valves. The word "NOTES" is printed in a large, white, sans-serif font on the left side of this header.

NOTES