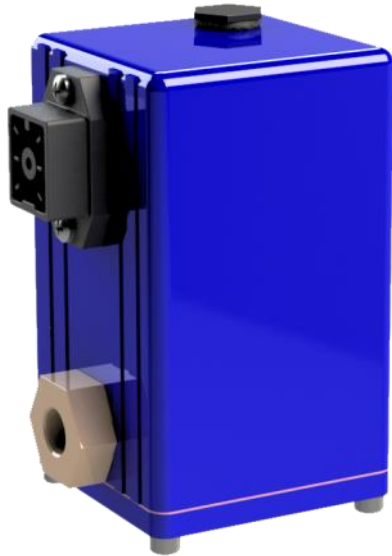


HAZARDOUS AREA PRESSURE CONTROL

ISQB1



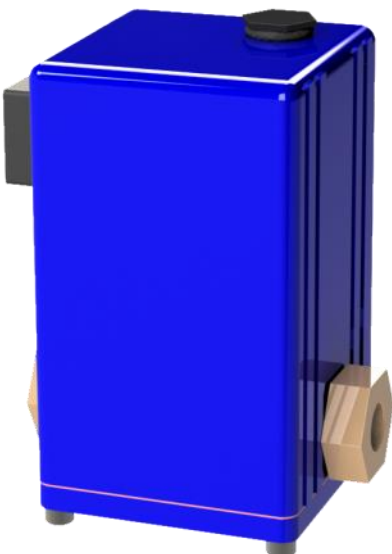
PRESSURE RANGE	0 to 150 psig (10 Bar)
ACCURACY REPEATABILITY	±0.5% F.S. ±0.2% F.S.
MAX FLOW	0.8 SCFM (23 slpm)
PORTS	1/8" NPT

The ISQB1 is an intrinsically safe-Factory Mutual (Class I, II, III, Division 1 Groups C, D, E, F, G) electro-pneumatic closed loop pressure control valve offered with standard 4-20 mA analog command signal. It can be assembled to air piloted regulator for high flow, higher pressure and various media.

HAZARDOUS AREA CLASSIFICATION

ISQB: Rated intrinsically safe and is Factory Mutual approved for Class I, II & III, Division 1, Groups C, D, E, F, & G.

ISF1



PRESSURE RANGE	Full Vacuum to 150 psig (10 Bar)
ACCURACY REPEATABILITY	±0.5% F.S. ±0.2% F.S.
MAX FLOW	0.8 SCFM (23 slpm)
PORTS	1/8" NPT

Hazardous media such as natural gas can be directly controlled with the ISF1 Nonincindive-Factory Mutual (Class II, Division 2 Groups C, D) electro-pneumatic closed loop pressure control valve. Offered with standard 4-20 mA analog command signal and 13.5 to 29 VDC supply voltage. Can be assembled to air piloted regulator for high flow, higher pressures and various media control.

HAZARDOUS AREA CLASSIFICATION

ISF1: Nonincindive for use in Class II, Division 2, Groups C and D T4; Type 4X hazardous (classified) locations and suitable for use in Class II, Division 2, Groups E, F and G T4; Type 4X hazardous (classified) locations.