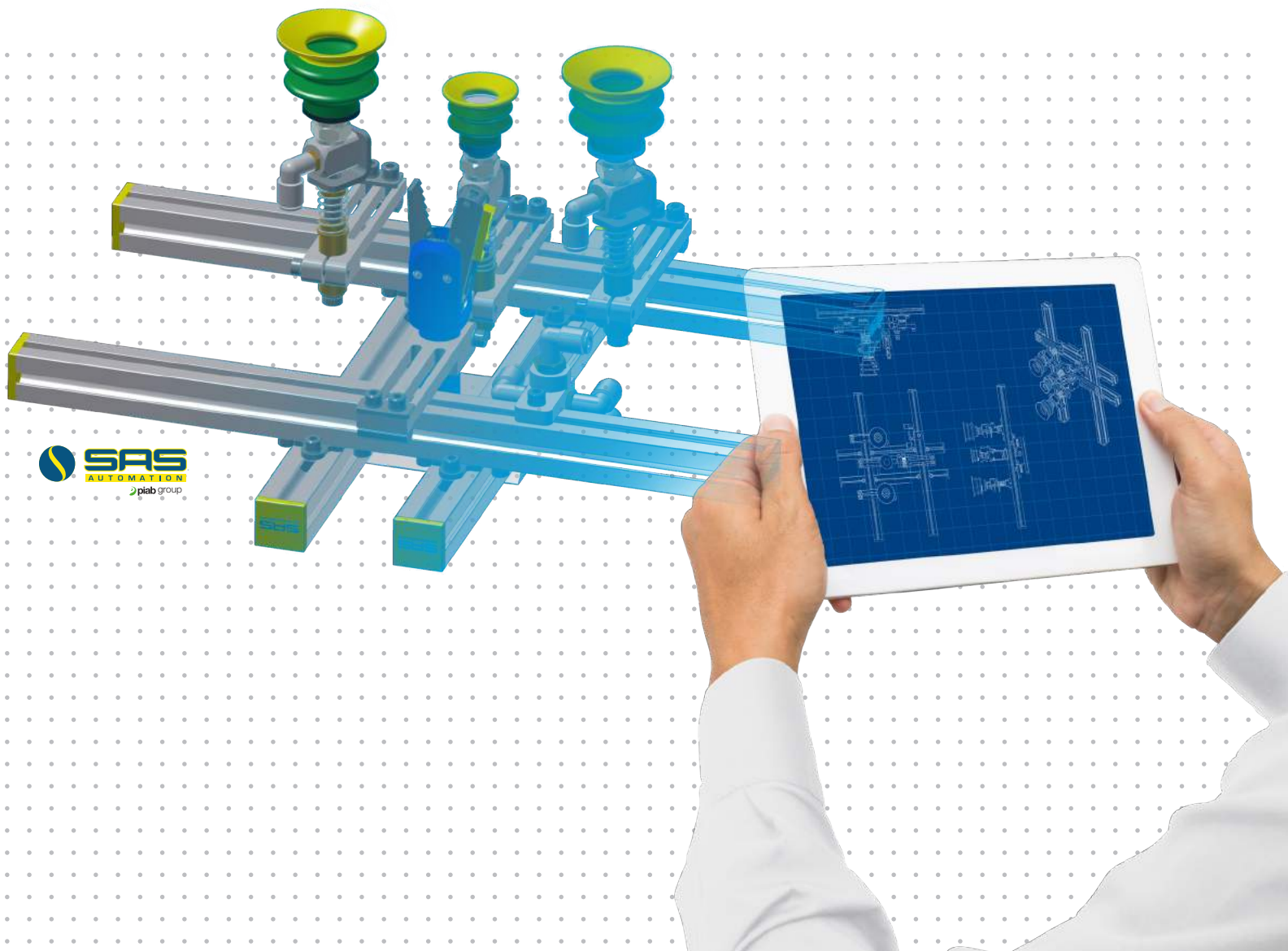


Simple EOATs for On-Demand Automation Needs

QUICK TOOL GUIDE



SAS
AUTOMATION
piab group

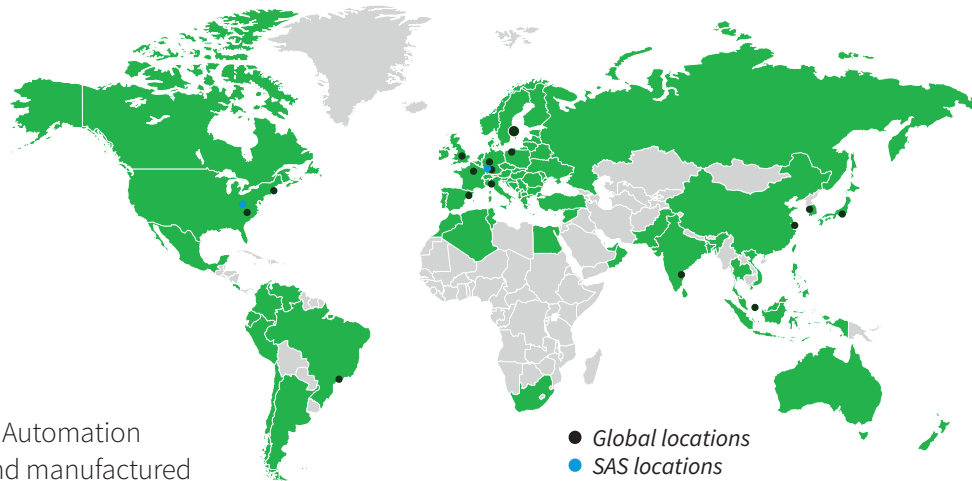
Smart solutions for the automated world™



Piab & SAS Automation Leadership

ABOUT Piab

Piab provides smart solutions for the automated world, helping thousands of end users and machine producers in e-commerce logistics, food, pharma, automotive, and other manufacturing industries to improve energy-efficiency, productivity, and working environments. With 430 employees and SEK 1bn in sales 2017, Piab is a global organization, serving customers in almost 70 countries from a network of subsidiaries and distributors. By leveraging the ongoing technological development in automation and robotics, and targeting high-growth segments and geographies, Piab's vision is to become the global leader in gripping and moving solutions.



ABOUT SAS

Since 1996, SAS Automation has designed and manufactured modular component-based robotic end-of-arm tooling (EOAT) and gripper systems. SAS are specialists in end-effector gripper systems for all makes of robots, used across a number of manufacturing and distribution industries. In late 2017, Piab acquired US-based SAS Automation.

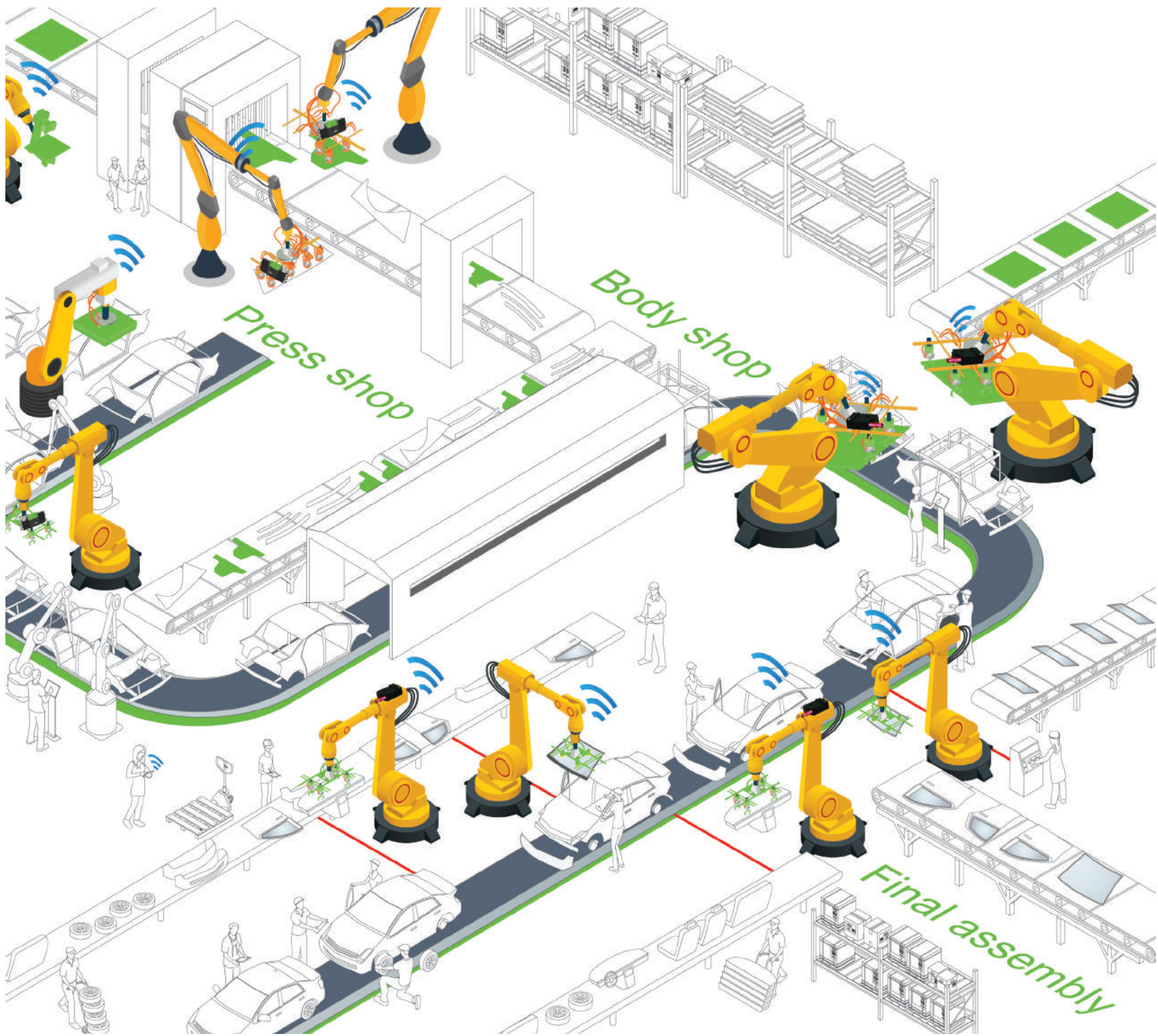
piab.com



PIAB BY THE
20+

locations including our corporate headquarters in Sweden





THE NUMBERS

430+ 350+ 1

porate

engineers, researchers, support, leadership, sales, and other professionals

distributors deliver product into 70+ countries globally

all serving YOU, our most important customer

Specifications are subject to change without notice.

Piab & SAS Automation Robotic Gripping Leadership

EOAT FEATURES AND BENEFITS

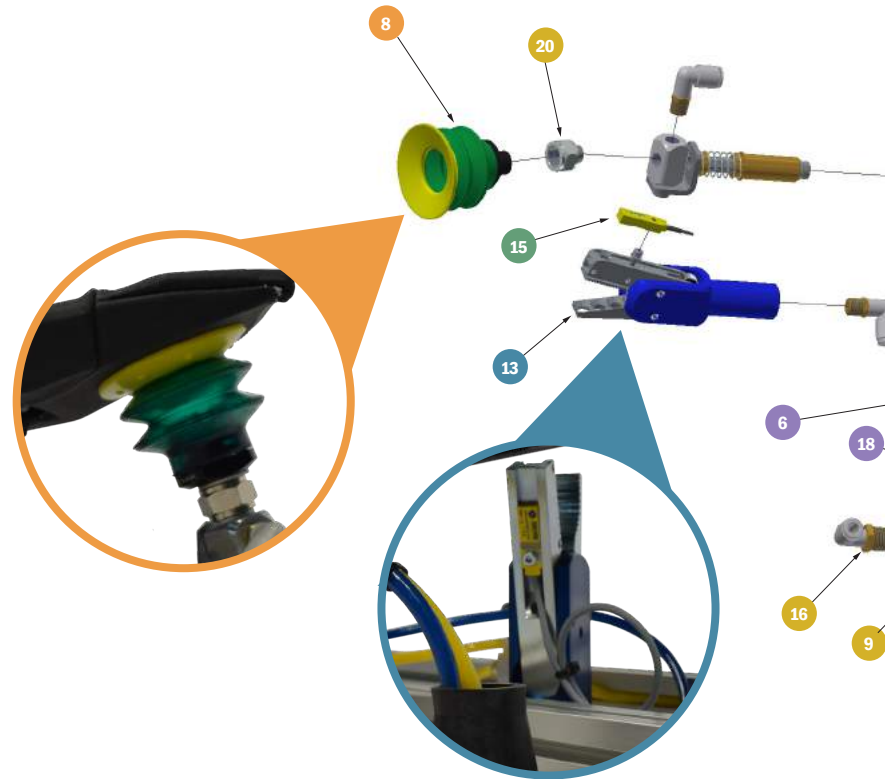
- EOAT to secure plastic parts and the runner system from an Injection Molding machine
- Uses modular components that are adjustable to line up the components to the plastic parts in the mold
- Replacement parts readily available to reduce downtime

SAS AUTOMATION GRIPS ONTO PART PLIER TECHNOLOGY

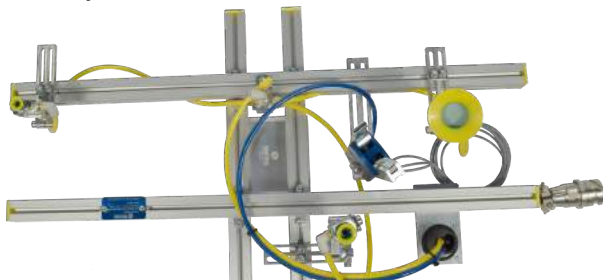
The GRZ 10...ST features a single-action spring return function and an aggressive tooth pattern. The grooved tooth pattern helps EOAT grippers to securely grip, turn, and tighten sprues. As an added convenience, this part is available with or without standard SAS sensors, and with or without connectors.

To help automate work done in tight work areas, the new GRZ 20-22/GRZ 20-22 C boasts a slimmer design, allowing companies to optimize their production processes. These parts feature small, grooved teeth and offer increased force capabilities ideal for large and die-locked sprues and runners. The GRZ 20-22/GRZ 20-22 C pliers are also available with or without sensors and connectors.

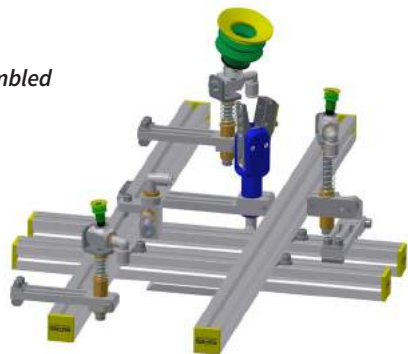
The GRZ 10...ST and GRZ 20-22/GRZ 20-22 C sprue/part pliers are a few of the many customized EOAT products designed by SAS Automation to meet the needs of customers from a number of industries, including automotive, food, plastics, and palletizing. For more information on SAS Automation and its new End-of-Arm Tooling solutions, call your SAS sales representative today.



VIEW #1 Fully assembled

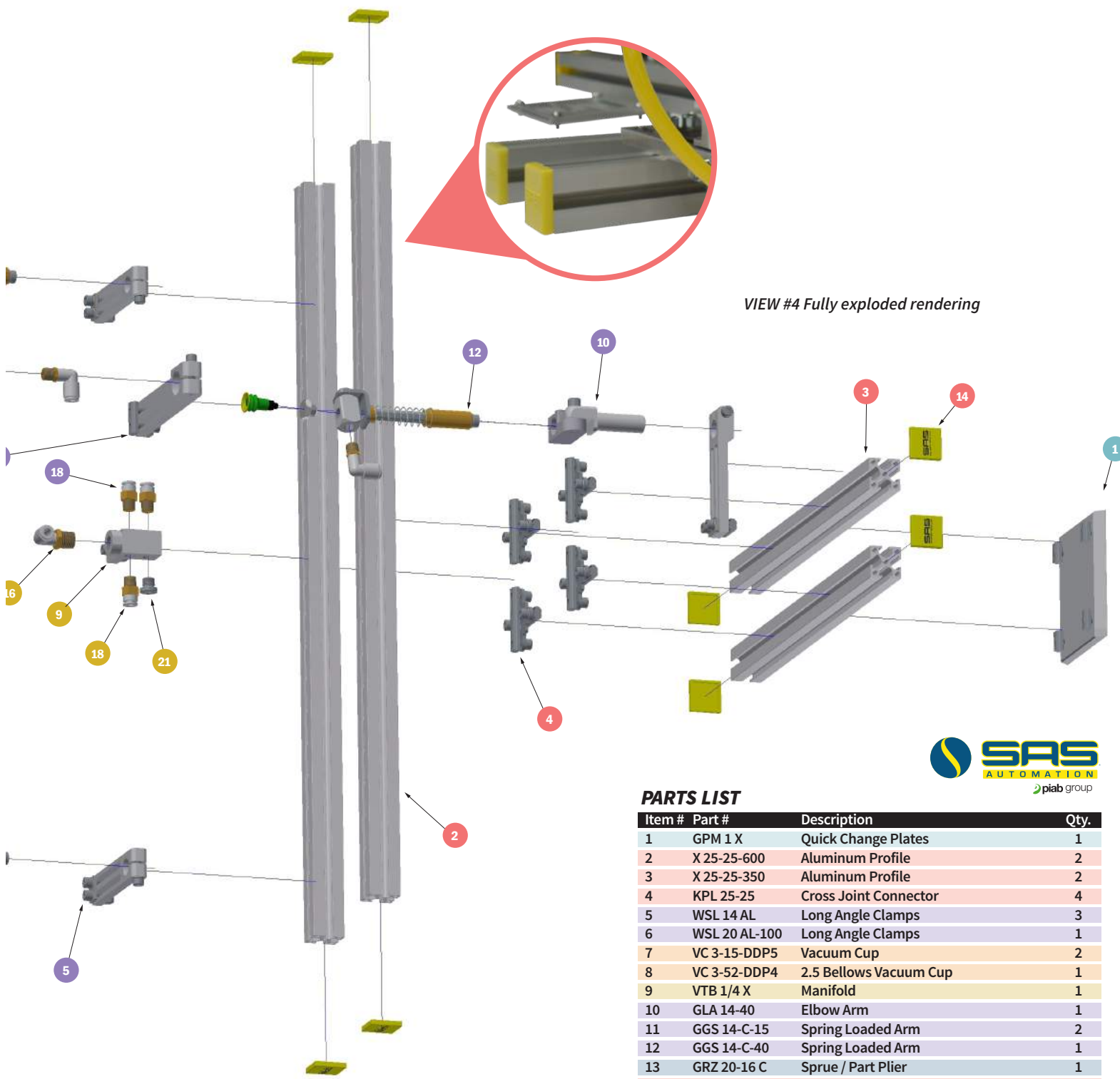


VIEW #2 Fully assembled



VIEW #3 Fully assembled with product engaged





VIEW #4 Fully exploded rendering



PARTS LIST

Item #	Part #	Description	Qty.
1	GPM 1 X	Quick Change Plates	1
2	X 25-25-600	Aluminum Profile	2
3	X 25-25-350	Aluminum Profile	2
4	KPL 25-25	Cross Joint Connector	4
5	WSL 14 AL	Long Angle Clamps	3
6	WSL 20 AL-100	Long Angle Clamps	1
7	VC 3-15-DDP5	Vacuum Cup	2
8	VC 3-52-DDP4	2.5 Bellows Vacuum Cup	1
9	VTB 1/4 X	Manifold	1
10	GLA 14-40	Elbow Arm	1
11	GGs 14-C-15	Spring Loaded Arm	2
12	GGs 14-C-40	Spring Loaded Arm	1
13	GRZ 20-16 C	Sprue / Part Plier	1
14	ADK 25/25 Y X	End Cap	8
15	SP 1.5	PNP Sensor	1
16	L06-02S	Male Elbow	1
17	L06-01S	Male Elbow	4
18	H06-01S	Male Straight	3
19	70-0249	Reduction Bushing M5-1/8	2
20	66-0401	Reduction Bushing 1/4-1/8	1
21	23-02	Pipe Plug G-1/8	1
	DMC-06-06S	Multi-port Tube Connector	1
	PMP-06	Multi-port Tube Connector Mounting Plate	1

LEGEND

1	Robotic Interface	8	Electrical
2	Framing	9	Pneumatic Cylinders
3	Locators	10	Manifolds, Fitting, Tubing & Accessories
4	Mounting	11	Hardware
5	Vacuum Gripping	12	Tools
6	Mechanical Gripping	13	Service
7	Cutting/Degating		

Piab & SAS Automation Robotic Gripping Leadership

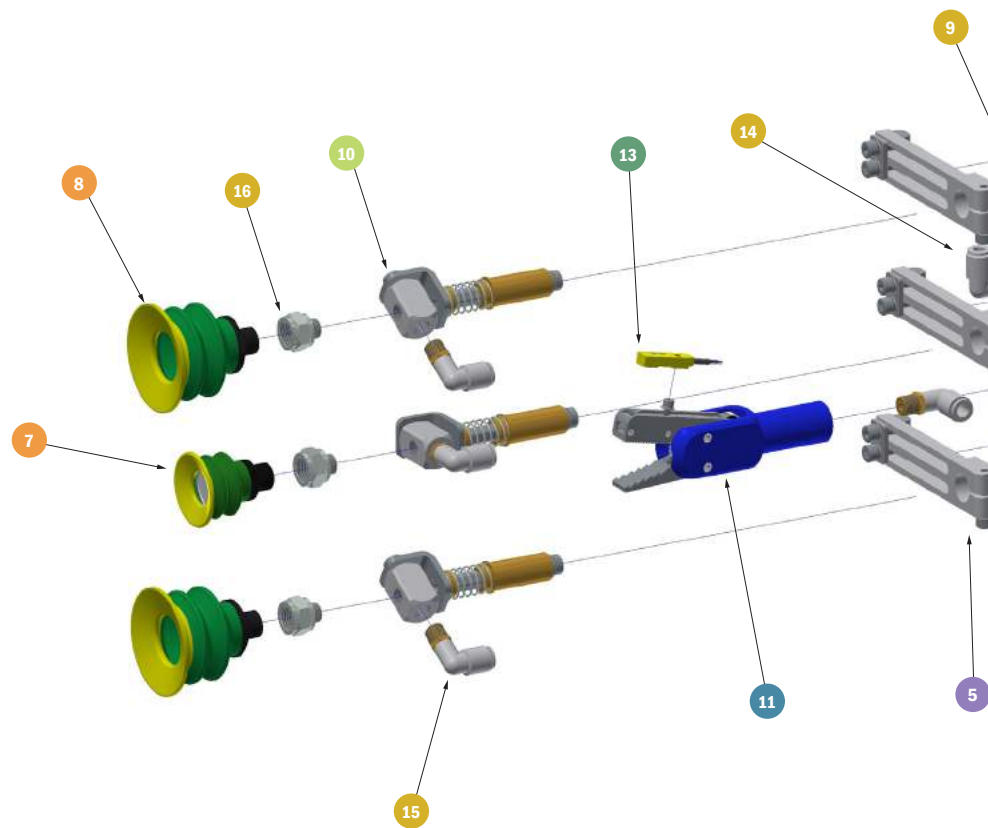
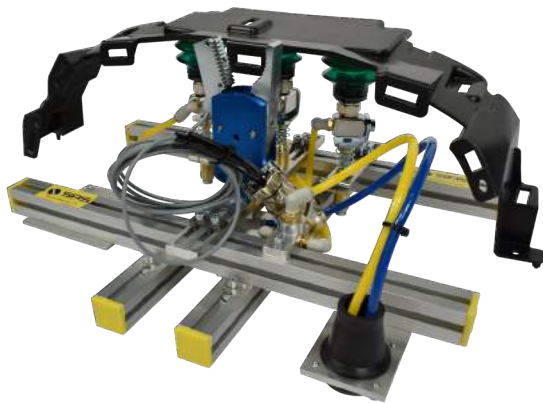
EOAT FEATURES AND BENEFITS

- EOAT to secure plastic parts and the runner system from an Injection Molding machine
- Uses modular components that are adjustable to line up the components to the plastic parts in the mold
- Replacement parts readily available to reduce downtime

VIEW #1 Fully assembled with product engaged



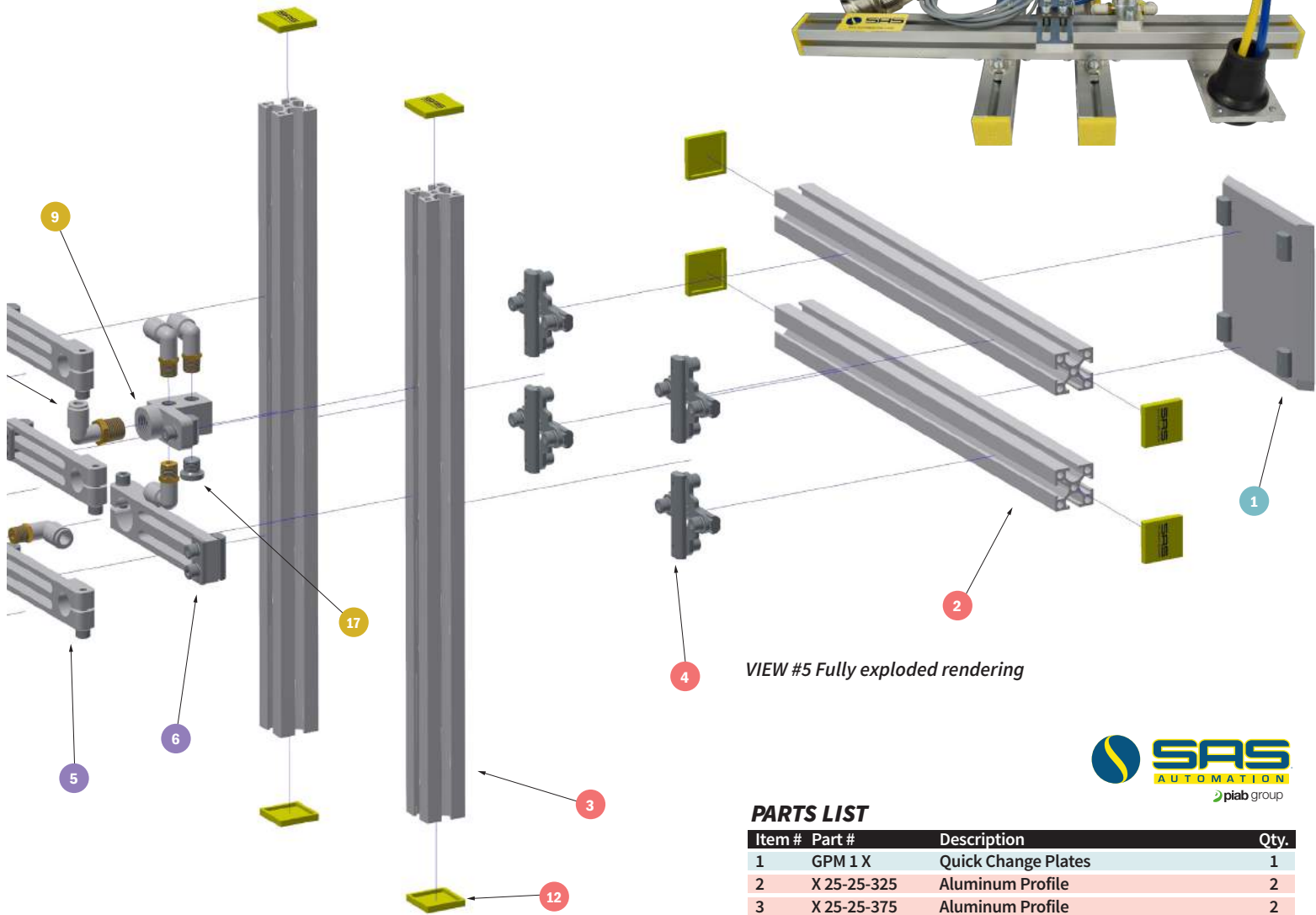
VIEW #2 Fully assembled with product engaged



VIEW #3 Fully assembled



VIEW #4 Fully assembled with product engaged



VIEW #5 Fully exploded rendering



PARTS LIST

Item #	Part #	Description	Qty.
1	GPM 1 X	Quick Change Plates	1
2	X 25-25-325	Aluminum Profile	2
3	X 25-25-375	Aluminum Profile	2
4	KPL 25-25	Cross Joint Connector	4
5	WSL 14 AL	Long Angle Clamps	3
6	WSL 20 AL	Long Angle Clamps	1
7	VC 3-35-DDP4	2.5 Bellows Vacuum Cup	1
8	VC 3-52-DDP4	2.5 Bellows Vacuum Cup	2
9	VTB 1/4 X	Manifold	1
10	GG5 14-C-15	Spring Loaded Arm	3
11	GRZ 20-16 STC	Sprue / Part Plier	1
12	ADK 25/25 Y X	End Cap	8
13	SP 1.5	PNP Sensor	1
14	L06-02S	Male Elbow	1
15	L06-01S	Male Elbow	7
16	66-0401	Reduction Bushing 1/4-1/8	3
17	23-02	Pipe Plug G-1/8	1
	DMC-06-06S	Multi-port Tube Connector	1
	PMP-06	Multi-port Tube Connector Mounting Plate	1

LEGEND

1	Robotic Interface	8	Electrical
2	Framing	9	Pneumatic Cylinders
3	Locators	10	Manifolds, Fitting, Tubing & Accessories
4	Mounting	11	Hardware
5	Vacuum Gripping	12	Tools
6	Mechanical Gripping	13	Service
7	Cutting/Degating		

QUICK CHANGE SYSTEM

SWM... Quick Change Mounting Chuck

Type	Part No		A	B
	GPM	Style		
SWM	1		123	100
SWM	2		231	160
SWM	3		330	250
SWM	1	E	123	100
SWM	2	E	231	160
SWM	3	E	330	250

Part Number Example: SWM 2 E

Note: E = Less Pneumatic Coupler and Fittings



GPM... Quick Change Mounting Plates

Type	Part No		A	B
	Size	Profile		
GPM	1		100	100
GPM	2		160	160
GPM	3		250	250
GPM	1 X	L/X	100	100
GPM	2 X	L/X	160	160
GPM	3 X	L/X	250	250

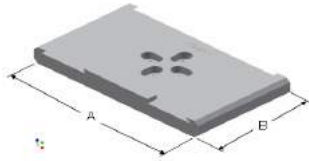
Part Number Example: GPM 2 X

Note: L/X = With L/X Channel Nuts and Fasteners



GHV... Wall Mount

Type	Part No		A	B
	GPM	Profile		
GHV	1		120	76.2
GHV	2		180	101.6
GHV	3		270	152.4



Fittings

Part No	A	Compatible Fitting
94-4902	M5	92-5002
94-0104	G1/8	92-0204
94-0306	G1/4	92-0406
92-5002	M5	94-4902
92-0204	G1/8	94-0104
92-0406	G1/4	94-0306

Part Number Example: 94-0104

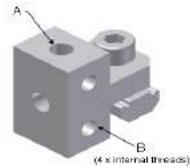


PNEUMATIC CONNECTORS

VTB... Manifold Block

Type	Part No		B
	A	Profile	
VTB	M5	L	M5
VTB	1/4	X	G1/8

Part # Example: VTB 1/4 X



Tubing

Type	Part No			Color
	ØA- ØB	L	Profile	
03-	04	03 B-	20	Blue
03-	04	03 Y-	20	Yellow
03-	04	03 B-	100	Blue
03-	04	03 Y-	100	Yellow
03-	06	04 B-	20	Blue
03-	06	04 Y-	20	Yellow
03-	06	04 B-	100	Blue
03-	06	04 Y-	100	Yellow
03-	08	05 B-	20	Blue
03-	08	05 Y-	20	Yellow
03-	08	05 B-	100	Blue
03-	08	05 Y-	100	Yellow

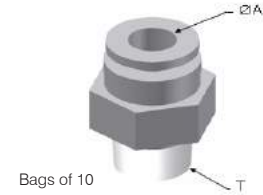
Part Number Example: 03-0604Y-20 (Roll)



H... Male Connector One-Touch Fitting

Type	Part No		Thread
	ØA	T	
H	04-	M5	M5
H	04-	01S	G1/8
H	06-	M5	M5
H	06-	01S	G1/8
H	06-	02S	G1/4
H	08-	01S	G1/8
H	08-	02S	G1/4

Part Number Example: H06-01S



Bags of 10

L... Male Elbow One-Touch Fitting

Type	ØA	T	Thread
L	04-	M5	M5
L	04-	01S	G1/8
L	06-	M5	M5
L	06-	01S	G1/8
L	06-	02S	G1/4
L	08-	01S	G1/8
L	08-	02S	G1/4

Part Number Example: L06-01S

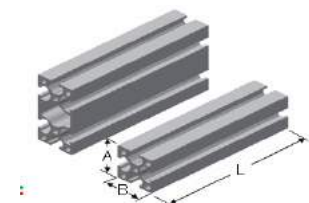


FRAME PROFILES

X... Aluminum Profile

Type-	Part No		L
	A/	B	
X-	25/	25	2 m
X-	50/	25	2 m

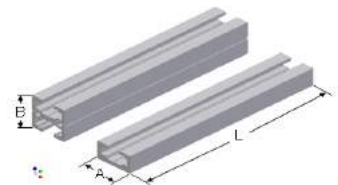
Part Number Example: X-25/25



C Light... Aluminum Profile

Type-	Part No		L
	A/	B	
C-	18/	10	2 m
C-	18/	18	2 m

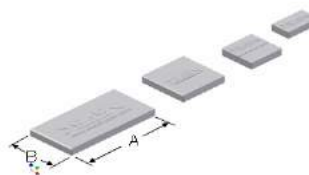
Part Number Example: C-18/18 L



ADK... Profile End Caps

Type	Part No		Profile	Color
	A	B		
ADK	18/	10Y	L	Yellow
ADK	18/	18Y	L	Yellow
ADK	25/	25Y	X	Yellow
ADK	50/	25Y	X	Yellow

Part Number Example: ADK 18/18Y L

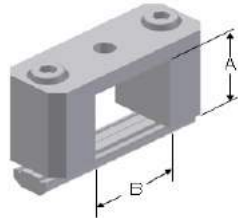


FRAME CONNECTORS

KBV... Cross Joint Connector

Type	Part No		Profile
	A-	B	
KBV	10-	18	L
KBV	18-	18	L
KBV	25-	25	X
KBV	25-	50	X
KBV	50-	25	X

Part Number Example: KBV 25-25 X



KPL... Cross Joint Connector

Type	Part No		Profile
	A-	B	
KPL	18-	18	L
KPL	25-	25	X
KPL	25-	50	X
KPL	50-	50	X

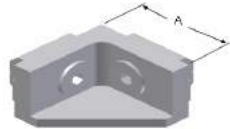
Part Number Example: KPL 25-25 X



WIV... Angle Joint Connector

Type	Part No	
	A	Profile
WIV	25	X
WIV	50	X

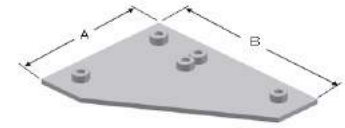
Part Number Example: WIV 25 X



EVB... Corner Joint Plate

Type	Part No	
	Profile	B
EVB	25 X	101.6
EVB	50 X	101.6

Part Number Example: EVB 25 X

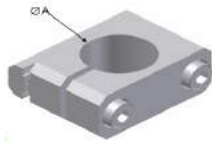


MOUNTING CLAMPS

KVB... Cross Clamp

Type	Part No	
	ØA	Profile
KVB	10	L/X
KVB	14	L/X
KVB	20	X
KVB	30	X

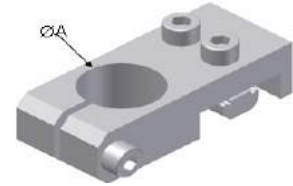
Part Number Example: KVB 20 X



WST... Angle Clamp

Type	Part No	
	ØA	Profile
WST	10	L
WST	10	X
WST	14	X
WST	20	X
WST	30	X

Part Number Example: WST 20 X



WSL... Long Angle Clamp

Type	Part No		Material
	ØA	Profile	
WSL	10	L/X	Nylon Titanium
WSL	10	L/X	Aluminum
WSL	14	L/X	Nylon Titanium
WSL	14	L/X	Aluminum
WSL	20	X	Nylon Titanium
WSL	20	X	Aluminum
WSL	30	X	Nylon Titanium
WSL	30	X	Aluminum

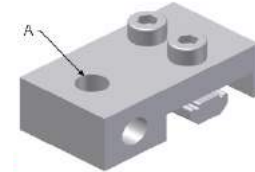
Part Number Example: WSL 20 X



WSS... Angle Connector

Type	Part No		
	A	Profile	Thread
WSS	M5	L	M5
WSS	1/8	X	G1/8
WSS	1/4	X	G1/4

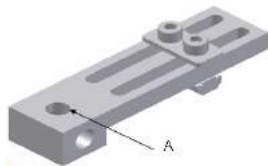
Part Number Example: WSS 1/8 X



WIV... Angle Joint Connector

Type	Part No	
	A	Profile
WIV	25	X
WIV	50	X

Part Number Example: WIV 25 X



SPECIAL CYLINDERS

KHZ... Short Stroke Cylinder

Type	Part No		
	Bore-	Stroke-	Action
KHZ	12-	10-	D
KHZ	20-	10-	D
KHZ	20-	20-	D
KHZ	20-	30-	D
KHZ	32-	10-	D
KHZ	32-	20-	D
KHZ	32-	30-	D

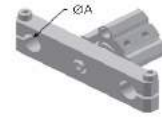
Part Number Example: KHZ 32-20-D



SZD... Special Cylinder

Type	Part No		
	Bore-	Stroke	ØA
SZD	12-	10	10
SZD	12-	20	10
SZD	20-	10	14
SZD	20-	20	14
SZD	20-	30	14
SZD	20-	50	14
SZD	32-	10	20
SZD	32-	20	20
SZD	32-	30	20
SZD	32-	50	20

Part Number Example: SZD 20-50

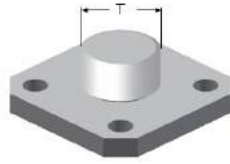


ADZ... Short Stroke Cylinder Adapter

Type	Part No		
	VLR-	KHZ...	T
ADZ	14-	12	M12x1
ADZ	20-	20	M17x1
ADZ	20-	32	M17x1
ADZ	30-	32	M17x1

Note: T = External Thread

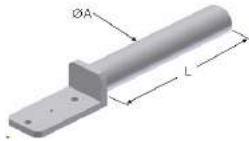
Part Number Example: ADZ 20-20



GAZ... Special Cylinder Mounting Arm

Type	Part No		
	KHZ...-	ØA	L
GAZ	12-	10-	90
GAZ	12-	14-	120
GAZ	20-	20-	150
GAZ	32-	20-	150

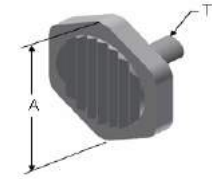
Part Number Example: GAZ 20-20-50



DPL... Pressure Plates

Type	Part No		
	A-	T	Thread
DPL	12-	3	M3
DPL	20-	5	M5
DPL	24-	8	G1/8
DPL	25-	3	M3
DPL	25-	4	M4
DPL	25-	5	M5
DPL	31-	4	M4

Part Number Example: DPL 25-4



VACUUM CUPS

VS 0... Oval Vacuum Cup

Type	Part No		Mat.	T
	A x	B		
VS 0-	6 x	18	N	M5
VS 0-	6 x	18	S	M5
VS 0-	10 x	30	N	G1/8
VS 0-	10 x	30	S	G1/8
VS 0-	15 x	45	N	G1/4
VS 0-	15 x	45	S	G1/4
VS 0-	20 x	60	N	G1/4
VS 0-	20 x	60	S	G1/4
VS 0-	25 x	75	N	G1/4
VS 0-	25 x	75	S	G1/4

Material - N = Nitril Rubber
Material - P = Polyurethane



VS 1... Flat Vacuum Cup

Type	Part No		Mat.	T
	ØA-			
VS 1-	10-	N	5	
VS 1-	15-	N	5	
VS 1-	20-	N	8	
VS 1-	25-	N	8	
VS 1-	30-	N	8	
VS 1-	40-	N	8	
VS 1-	50-	N	8	
VS 1-	80-	N	4	

Note for T: 5 = M5 8 = G1/8" 4 = G1/4"
Material - N = Nitril Rubber



VS 1... Flat Vacuum Cup

Type	Part No		T
	ØA-	Mat.	
VS 1-	10-	P	5
VS 1-	15-	P	5
VS 1-	20-	P	8
VS 1-	25-	P	8
VS 1-	30-	P	8
VS 1-	40-	P	8
VS 1-	50-	P	8
VS 1-	80-	P	4

Part Number Example: VS 1-25-N8
Note for T: 5 = M5 8 = G1/8" 4 = G1/4"
Material - P = Polyurethane



VS 2... 1.5 Bellows Vacuum Cup

Type	Part No		T
	ØA-	Mat.	
VS 2-	10-	N	5
VS 2-	15-	N	5
VS 2-	20-	N	8
VS 2-	30-	N	8
VS 2-	40-	N	8
VS 2-	50-	N	8

Part Number Example: VS 2-30-P8
Note for T: 8 = G1/8"
Material - N = Nitril Rubber



VS 2... 1.5 Bellows Vacuum Cup

Type	Part No		T
	ØA-	Mat.	
VS 2-	10-	P	5
VS 2-	15-	P	5
VS 2-	20-	P	8
VS 2-	30-	P	8
VS 2-	40-	P	8
VS 2-	50-	P	8

Part Number Example: VS 2-30-P8
Note for T: 8 = G1/8"
Material - P = Polyurethane



VS 3... 2.5 Bellows Vacuum Cup

Type	Part No		T
	ØA-	Mat.	
VS 3-	10-	N	5
VS 3-	15-	N	5
VS 3-	15-	N	8
VS 3-	20-	N	5
VS 3-	20-	N	8
VS 3-	30-	N	8
VS 3-	40-	N	8
VS 3-	60-	N	8

Part Number Example: VS 3-20-N8
Note for T: 5 = M5 8 = G1/8"
Material - N = Nitril Rubber



VS 3... 2.5 Bellows Vacuum Cup

Type	Part No		T
	ØA-	Mat.	
VS 3-	10-	P	5
VS 3-	15-	P	5
VS 3-	15-	P	8
VS 3-	20-	P	5
VS 3-	20-	P	8
VS 3-	30-	P	8
VS 3-	40-	P	8
VS 3-	60-	P	8

Part Number Example: VS 3-20-N8
Note for T: 5 = M5 8 = G1/8"
Material - P = Polyurethane



GRIPPER / MOUNTING ARMS

GAF... Spring Loaded Gripper

Type	Part No			T	N
	ØA-	Shaft-	Stroke		
GAF	10-	C-	10	M5	M5
GAF	10-	M-	10	M5	M5
GAF	14-	C-	15	G1/8	G1/8
GAF	14-	M-	15	G1/8	G1/8
GAF	14-	C-	40	G1/8	G1/8
GAF	14-	M-	40	G1/8	G1/8
GAF	20-	C-	20	G1/4	G1/8
GAF	20-	M-	20	G1/4	G1/8
GAF	20-	C-	50	G1/4	G1/8
GAF	20-	M-	50	G1/4	G1/8
GAF	20-	C-	100	G1/4	G1/8
GAF	20-	M-	100	G1/4	G1/8

Note: M = Threaded Shaft w/ Jam Nuts
C = Regular Shaft

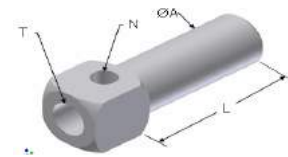
Part Number Example: GAF 14-C-15



GSE... Gripper Arm

Type	Part No			T	N
	ØA-	L			
GSE	10-M5	90		M5	M5
GSE	10-1/8	90		G1/8	M5
GSE	14-	120		G1/8	G1/8
GSE	20-	150		G1/4	G1/8
GSE	30-	200		G1/4	G1/8

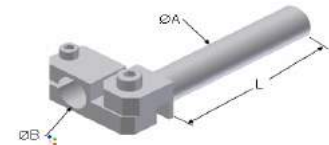
Part Number Example: GSE 20-50



GLA...Elbow Arm

Type	Part No		
	ØA-	L	ØB-
GLA	10-	90	10
GLA	14-	120	14
GLA	20-	150	20
GLA	20/30	150	30

Part Number Example: GLA 20-50



GGs... Spring Loaded Non-Rotational Gripper Arm

Type	Part No			T
	ØA-	Shaft-	Stroke	
GGs	10-	C-	10	M5
GGs	10-	M-	10	M5
GGs	14-	C-	15	G1/8
GGs	14-	M-	15	G1/8
GGs	14-	C-	40	G1/8
GGs	14-	M-	40	G1/8
GGs	20-	C-	20	G1/4
GGs	20-	M-	20	G1/4
GGs	20-	C-	50	G1/4
GGs	20-	M-	50	G1/4

Note: M = Threaded Shaft w/ Jam Nuts
C = Regular Shaft

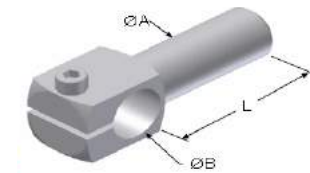
Part Number Example: GGS 14-C-15



WKA...Angle Arm

Type	Part No		
	ØA-	L	ØB-
WKA	10-	90	10
WKA	14-	120	14
WKA	20-	150	20
WKA	30-	200	20

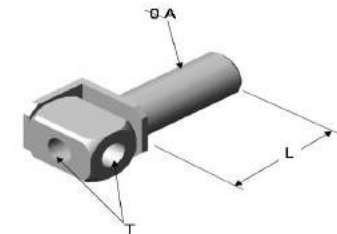
Part Number Example: WKA 20-50



GGE... Elbow Gripper Arm

Type	Part No		
	ØA-	L	T
GGE	10-	90	M5
GGE	14-	120	G1/8
GGE	20-	150	G1/4
GGE	30-	200	G1/4

Part Number Example: GGE 20-50



RVA... Retracting Vacuum Arm

Type	Part No			
	ØA-	Stroke	N	M
RVA	20-	30	G1/8	M17x1
RVA	20-	60	G1/8	M17x1
RVA	30-	50	G1/8	M17x1

Part Number Example: RVA 20-30



GRIPPER FINGERS

GRF... Gripper Finger (Spring Return)

Part No				
Type	ØA-	B	N	M
GRF	14-	95	M5	M12x1
GRF	14-	95VP	M5	M12x1
GRF	20-	95	G1/8	M17x1
GRF	20-	95VP	G1/8	M17x1
GRF	30-	95	G1/8	M27x1

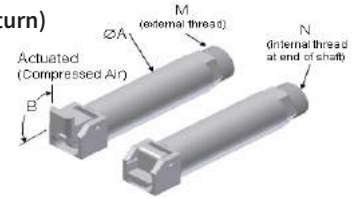
Part Number Example: GRF 20-95, VP with rubber pac



GRF... Gripper Finger (Spring Return)

Part No				
Type	ØA-	B	N	M
GRF	20-	90	G1/8	M17x1
GRF	30-	90	G1/8	M27x1

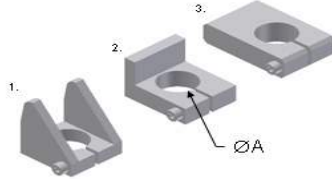
Part Number Example: GRF 20-90



ZTS/ANS/ANF... Delrin Finger Accessories

Part No			
No	Type	ØA	GRF
1	ZTS	14	14-95
	ZTS	20	20-95
	ZTS	30	30-95
2	ANS	14	14-95
	ANS	20	20-95
	ANS	30	30-95
3	ANF	14	14-95
	ANF	20	20-95
	ANF	30	30-95

Part Numbers Example: ANS 20



VLR... Finger Extension

Part No			
Type	ØA-	L	M
VLR	10-	90	M8x1
VLR	14-	120	M12x1
VLR	20-	150	M17x1
VLR	30-	200	M27x1

Part Number Example: VLR 20-50



ZTB... Delrin Locator Pin

Part No			
Type	ØA	M	L
ZTB	10	M8x1	50
ZTB	14	M12x1	110
ZTB	20	M17x1	110
ZTB	30	M27x1	100

Part Number Example: ZTB 20

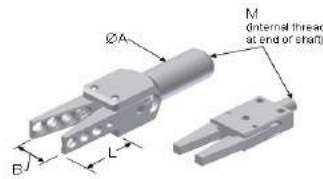


PART/SPRUE PLIERS & GRIPPERS

GRZ... Sprue / Parts Pliers

Part No					
Type	ØA-	Bore	L	B	M
GRZ	10-	10	29	14	M5
GRZ	20-	16	37	18	G1/8

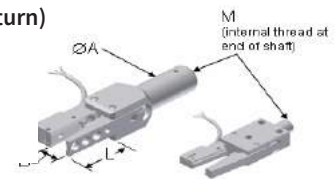
Part Number Example: GRZ 10-10



GRF... Gripper Finger (Spring Return)

Part No						
Type	ØA-	Bore	Jaw	L	B	M
GRF	10-	10	C	29	15	M5
GRF	20-	16	C	37	18	G1/8

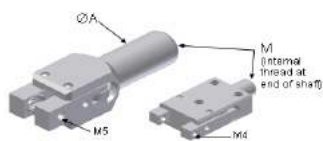
Part Number Example: GRZ 20-16 C



GRZ... Sprue / Parts Pliers w/ Mounting Holes

Part No				
Type	ØA-	Bore	Jaw	M
GRZ	10-	10	A	M5
GRZ	20-	16	A	G1/8

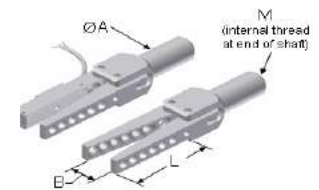
Part Number Example: GRZ 20-16 A



GRZ... Sprue / Parts Pliers w/ Long Jaws

Part No						
Type	ØA-	Bore	Jaw	L	B	M
GRZ	20-	16	L	69	34	G1/8
GRZ	20-	16	LC	69	34	G1/8

Part Number Example: GRZ 20-16 LC



PART SENSORS

LRS... Part Sensor

Part No				
Type	Thread	Output	Range	Price
LRS 14	M14	PNP	20-600	\$ 105.00
LRS 18	M18	PNP	20-600	\$ 116.75

Part Number Example: LRS 18



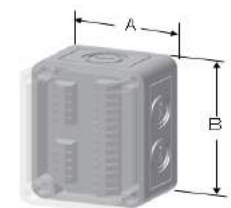
RPL & KK1... Junction Boxes

Part No			
Type	#Output	A	B
RPL	2	65	94
RPL	4	65	94
RPL	6	94	130
RPL	8	94	130
KK	1	65	94
KK	2	94	130

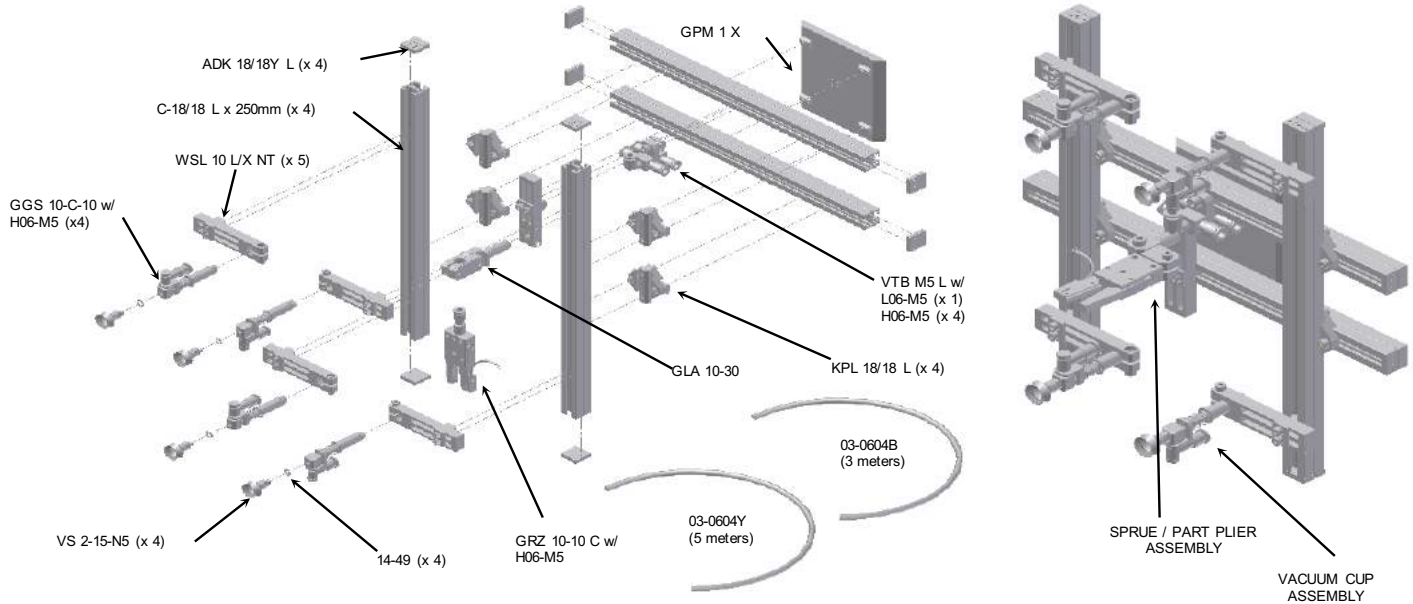
Part Number Example: RPL 4

RPL = Sensor "And" Logic

KK1 = Sensor Pass Through J Box

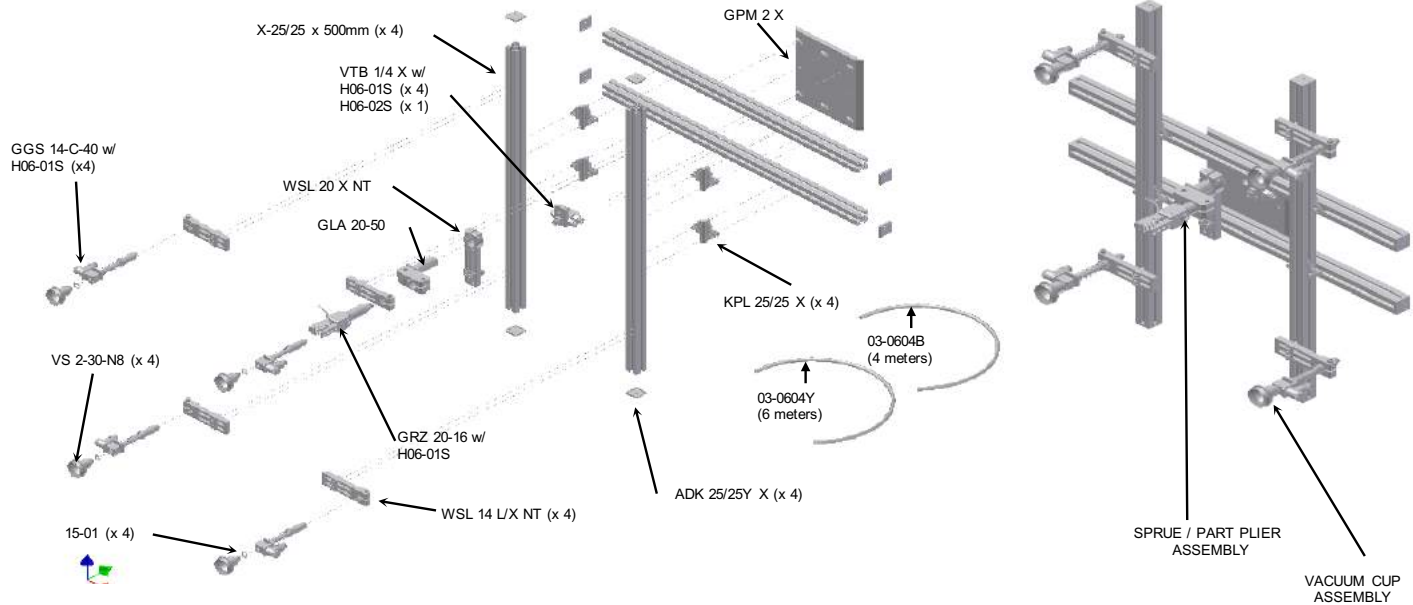


GRIPPER KIT C-18/18 FOR ROBOTS



Part #	# of Vacuum Cup Assemblies	# of Sprue / Part Plier Assemblies	Est. Part Weight	Max. Horizontal Cup Spacing	Max. Vertical Cup Spacing
EOAT KIT C-18/18	4	0	1 kg.	325	225
EOAT KIT C-18/18 WITH PLIER	4	1	1 kg.	325	225

GRIPPER KIT X-25/25 FOR ROBOTS

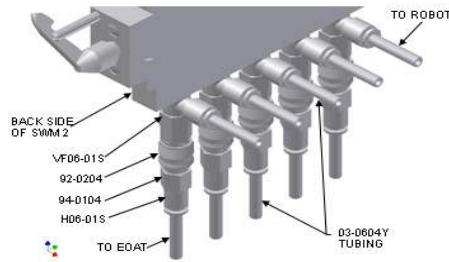


Part #	# of Vacuum Cup Assemblies	# of Sprue / Part Plier Assemblies	Est. Part Weight	Max. Horizontal Cup Spacing	Max. Vertical Cup Spacing
EOAT KIT X-25/25	4	0	5 kg.	600	450
EOAT KIT X-25/25 WITH PLIER	4	1	5 kg.	600	450

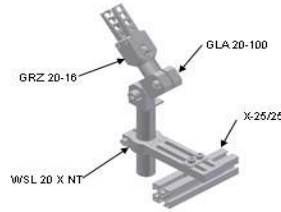
SUB - assemblies for enhanced functionality

MODULAR, ADJUSTABLE GRIPPER COMPONENTS

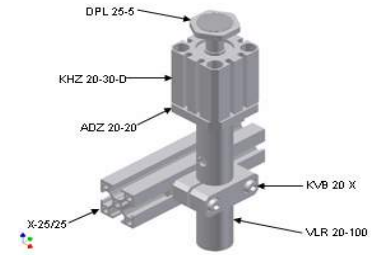
Dependable Technical Service Other Items and Sizes Available Upon Request



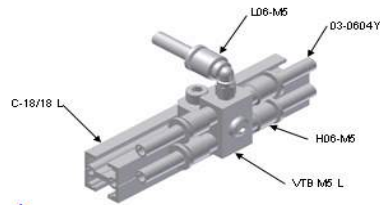
Quick Change System Assembly



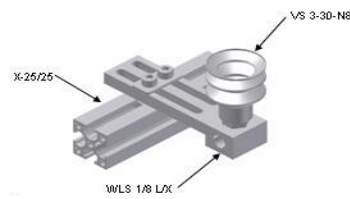
Part/Sprue Plier & Gripper Assembly



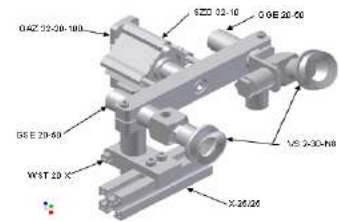
Special Cylinder Assembly



Pneumatic Connector/Accessories Assembly



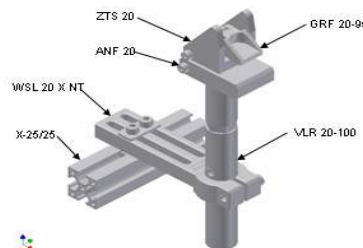
Mounting Clamp Assembly



Special Cylinder & Gripper/Mounting Arm Assembly



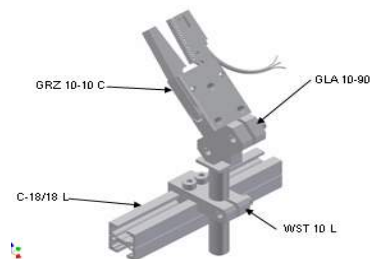
Gripper/Mounting Arm Assembly



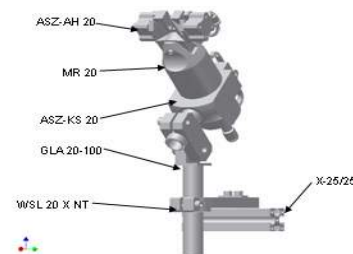
Gripper Finger Assembly



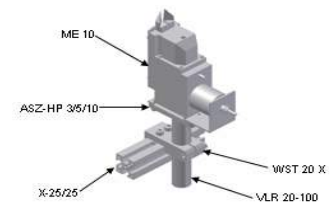
Gripper Finger Assembly



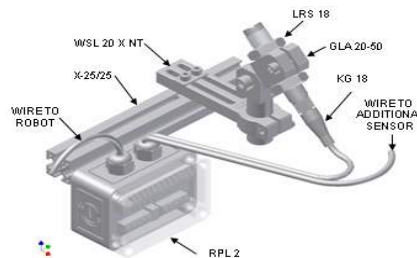
Part/Sprue Plier & Gripper Assembly



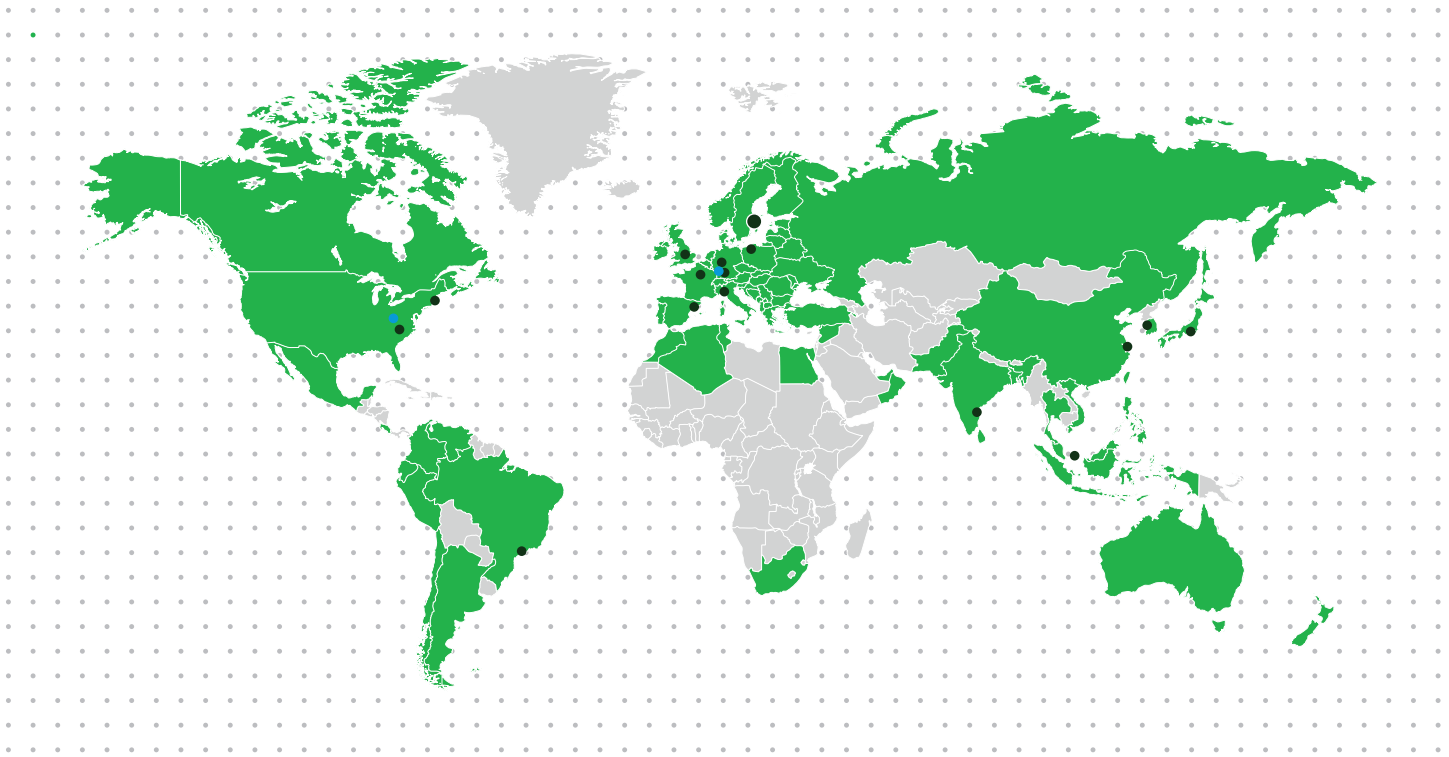
Sprue Cutter Assembly



Sprue Cutter Assembly



Part Sensor Assembly



www.sas-automation.com

● Global locations
● SAS locations

ROBOTIC GRIPPING DIVISION

SAS Automation

1200 South Patton Street
Xenia, Ohio 45385 USA
Phone: +1 937 372 5255
Fax: +1 937 372 5553
Toll Free: 1 888 SAS EOAT
(1 888 727 3628)

SAS Automation

Robotergreifsysteme GmbH

Bannwaldallee 60
76185 Karlsruhe
Germany
Phone: +49 (0)721 26306 – 0
Fax: +49 (0)721 26306 – 22

PIAB GLOBAL LOCATIONS

BRAZIL – Sao Paulo

Phone: +55 11 4492 9050
Email: info-brasil@piab.com

CANADA – Hingham MA (US)

Phone: +1 781 337 7309
Email: info-usa@piab.com

CHINA – Shanghai

Phone: +86 21 5237 6545
Email: info-china@piab.com

FRANCE – Lagny sur Marne

Phone: +33 1 6430 8267
Email: info-france@piab.com

GERMANY – Butzbach

Phone: +49 6033 7960 – 0
Email: info-germany@piab.com

GERMANY – Reutlingen

Phone: +49 (0) 71 21 / 799 90 - 24
Email: info@feba-systeme.com

MEXICO – Hingham MA (US)

Phone: +1 781 337 7309
Email: info-mxca@piab.com

INDIA – Chennai

Phone: +91 9444 25 36 48
Email: info-india@piab.com

ITALY – Torino

Phone: +39 011 226 36 66
Email: info-italy@piab.com

JAPAN – Tokyo

Phone: +81 3 6662 8118
Email: info-japan@piab.com

POLAND – Gdansk

Phone: +48 58 785 08 50
Email: info-poland@piab.com

SPAIN – Barcelona

Phone: +34 93 6333876
Email: info-spain@piab.com

SINGAPORE

Phone: +65 6455 7006
Email: info-singapore@piab.com

SOUTH KOREA – Dokok-Dong

Phone: +82 2 3463 0751
Email: info-korea@piab.com

SWEDEN – Stockholm (HQ)

Phone: +46 8 630 25 00
Email: info-sweden@piab.com
UNITED KINGDOM – Loughborough
Phone: +44 1509 857 010
Email: info-uk@piab.com

USA – Hingham MA

Phone: +1 781 337 7309
Email: info-usa@piab.com

USA – Charlotte NC

Phone: +1 704 527 5052
Email: info-usa@piab.com