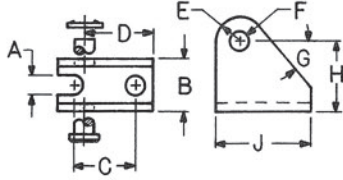


# HUMPHREY AIR CYLINDERS

- Air Cylinder Accessories are made of carbon steel • Burnished for surface smoothness • Bright zinc plated for corrosion resistance

## PIVOT BRACKET

- For use with Pivot cylinders
- Cylinders can Pivot through 120°
- One-piece construction for Strength, and ease of cylinder installation/removal
- Pivot pin and cotter pin supplied (Available separately... order by part number)

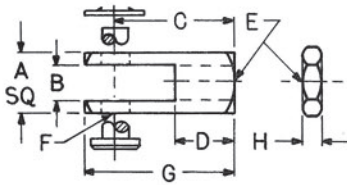


Note: previously cataloged cylinders used two-piece Model BP-Pivot Bracket

Accessory NUMBER	Cylinder Bore Sizes & MODELS	A	B	C	D	E	F	G	H	J
BP-8-C	1/2 (8)	.20	.52	.43	.54	.22	.16	50°	.64	.75
BP-11-C	3/4 (7) & 1 1/16 (6)	.26	.65	.75	.87	.31	.26	53°	.87	1.19
BP-25-C	1 1/4 (25)	.32	.77	.75	.94	.31	.26	53°	1.06	1.25
BP-15-C	1 1/2 (5) & 1 3/4 (75)	.39	.96	1.00	1.25	.38	.38	52°	1.37	1.63
BP-19-C	2 (4) & 2 1/2 (3)	.45	1.20	1.00	1.43	.38	.38	48°	1.68	1.81

## ROD CLEVIS

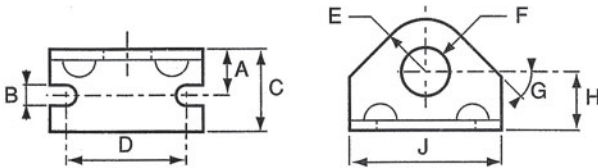
- For use on all cylinders
- Smooth beveled ends
- Locknut, clevis pin and cotter pin (Available separately... order by part number)



CT-8	1/2 (8)	.38	.19	.75	.38	10-32	.19	.94	.12	
CT-7	3/4 (7)	.50	.25	.94	.50	1/4-28	.26	1.20	.16	
CT-11	1 1/16 (6)	.50	.26	.94	.50	5/16-24	.26	1.20	.19	
CT-15	1 1/4 (25) & 1 1/2 (5)	.75	.38	1.30	.75	7/16-20	.38	1.70	.25	
CT-19	1 3/4 (75), 2(4), 2 1/2 (3)	.75	.38	1.30	.75	1/2-20	.38	1.70	.31	

## FOOT MOUNT

- For nose mounting and double-end mounting
- Gusseted for added strength



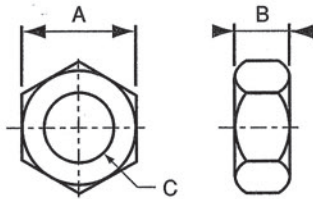
F-8-S	1/2 (8) Single Acting Types*	.31	.19	.62	1.00	.37	.38	56°	.57	1.38
F-8	1/2 (8) Double Acting Types	.31	.19	.62	1.00	.37	.44	56°	.57	1.38
F-7	3/4 (7) Single Acting Types**	.44	.19	.75	1.25	.40	.50	45°	.69	1.63
F-11	3/4 (7) Double Acting 1 1/16 (6) Single & Double Acting Types	.56	.27	1.00	1.50	.56	.63	45°	.81	1.88
F-15	1 1/4 (25) & 1 1/2 (5) All Types	.77	.27	1.50	1.89	.76	.76	49°	1.00	2.50
F-75	1 3/4 (75) All Types	.94	.34	1.50	2.25	.88	1.04	52°	1.25	3.00
F-19	2 (4) All Types	1.00	.34	1.62	2.25	1.00	1.38	60°	1.50	3.12
F-21	2 1/2 (3) All Types	1.00	.34	1.62	2.88	1.25	1.50	63°	1.75	3.75

\*Model 8-SP requires one each F-8-S and F-8 for double end mount.

\*\*Models 7-SP and 7-SHP require one each F-7 and F-11 for double end mount.

## MOUNTING NUT/JAM NUT

- Mounting Nut for nose or pivot tang threads
- Jam Nut for locking Rod Clevis



Mounting Nut No.	Where to Use Cyl. Bore & Type	A	B	C	Clevis Nut No.	Where to Use Cyl. Bore Size All Types Com.	A	B	C
JN-8-S	1/2 Single Acting*	.56	.22	3/8-24	C110-9	1/2	.370	.12	10-32
JN-8	1/2 Double Acting	.68	.25	7/16-20	C110-762	3/4	.43	.16	1/4-28
JN-7	3/4 Single Acting**	.75	.31	1/2-20	C110-763	1 1/16	.50	.19	5/16-24
JN-11	3/4 Double Acting 1 1/16 All Types	.93	.37	5/8-18	JN-8	1 1/4 & 1 1/2	.68	.25	7/16-20
JN-15	1 1/4 All Types 1 1/2 All Types	1.12	.42	3/4-16	JN-7	1 3/4 & 2 & 2 1/2	.75	.31	1/2-20
JN-75	1 3/4 All Types	1.50	.56	1-14					
JN-19	2 All Types	1.88	.50	1 1/4-12					
JN-21	2 1/2 All Types	2.06	.50	1 3/8-12					

\*Model 8-SP requires one each JN-8-S and JN-8 for double end mount.

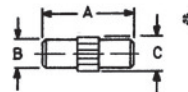
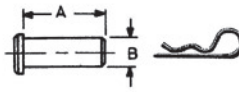
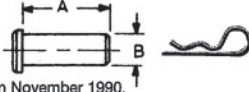
\*\*Models 7-SP and 7-SHP require one each JN-7 and JN-11 for double end mount.

# HUMPHREY AIR CYLINDERS

**PIVOT PINS**

May be ordered separately

\*\*NOTE: Changed to Cotter Pin in November 1990.



Bore Size	As supplied with Pivot Bracket:					As supplied with Rod Clevis:					For press-fit into pivot hole			
	Pivot Pin	Retainer	A	B	Prefix BP-	Clevis Pin	Retainer	A	B	Prefix CT-	Pivot Pin	A	B	C
1/2 (8)	7563	7571	.70	.15	-8C	7568	7571	.55	.18	-8	C32-413	.50	.15	.17
3/4 (7) & 1 1/16 (6)	7564	757	.85	.25	-11C	7569	7571	.67	.25	-7	C32-619	.75	.24	.26
1 1/4 (25)	7565	7571	.98	.25	-25C	7569	7572	.94	.37	-11	C32-412	.87	.24	.26
1 1/2 (5) & 1 3/4 (75)	7566	7572	1.19	.37	-15C	7570	7572	.94	.37	-15	C32-928	1.12	.37	.39
2 (4) 2 1/2 (3)*	7567	7572	1.43	.37	-19C	7570	7572	.94	.37	-19				

\*2 & 2 1/2 Bore models used shoulder bolt (Model C110-768), and nut (Model C110-759).