

AQUAPRUF SERIES

7400 SANITARY CONVEYORS
STAINLESS STEEL

*Aqua***Pruf**[®]



General Specifications:

- Straight Flat and Cleated Modular Belt Models
- Curved Flat Modular Belt Models
- Z-Frame Flat and Cleated Modular Belt Models (0 to 60°+)
- Loads up to 20 lbs per square foot of belt (90 kg/m²)
- Lengths up to 999" (25,375 mm)
- Widths up to 60" (1,524 mm)
- Continuous TIG welded 304 stainless steel frame



**Welded Stainless
Steel Construction**



**Solid UHMW
Wear Strips**



**400 Series Stainless
Steel Bearings**

7400 SERIES FEATURE OVERVIEW 120

7400 SANITATION & CLEANING OPTIONS 122

MODULAR FLAT BELT 124

MODULAR CLEATED BELT 126

CURVED MODULAR FLAT BELT 128

Z-FRAME MODULAR FLAT BELT 130

Z-FRAME MODULAR CLEATED BELT 132

SANITARY ROLLER CONVEYORS 134

PROFILES 136

BELTING 138

GEARMOTOR MOUNTING PACKAGES 142

GEARMOTORS 144

SUPPORT STANDS 146

PART NUMBER REFERENCE 149

Designed to transport Food & Pharmaceutical product with confidence while keeping operators safe.



Flange Belt Tracking System

Eliminates sprocket fasteners and keeps pulleys safe & sanitary.



Patented Sprocket Alignment Key

Provides continuous sprocket alignment for quick belt assembly.



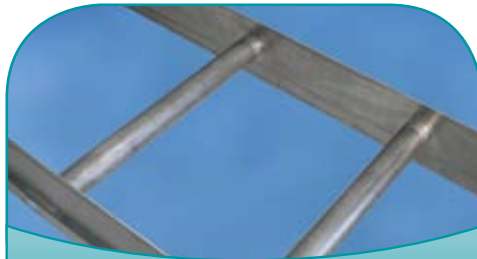
Belt Lifters

For easy cleaning on wide or long conveyors.



Tip-Up Tail

For quick release of belt tension.



Round Cross Members

Eliminate horizontal surfaces for complete drainage.



Solid UHMW Wear Strips

Quickly removed without tools for cleaning. Most pieces are identical & completely interchangeable.



Stainless Steel Gearmotors

located outside food zone.



USDA Accepted Open Hinge Modular Belt

Improves cleaning and access to pins.



Stainless Steel Welded Frame Construction

Eliminates fasteners in food zone.
(Continuous TIG welding)

Fast & Effective Sanitation Options for Daily Cleaning

Tool-less Tip-Up Pulley

for quick release of
belt tension

Tool-less Belt Lifters

for easy access to the
inside of the conveyor



Frame Cutouts

for continuous access to
the inside of the conveyor

NO TOOLS REQUIRED!

Total time for cleaning preparation:

30 Seconds

Fast & Effective Sanitation Options for Complete Dis-Assembly & Cleaning



Fully Assembled

to

**Completely
Dis-Assembled
in Minutes**

Conveyor Cleaning Preparation*

1 Person

3 Minutes Per Section

No Problem!



*Belt removal requires a hammer and tap

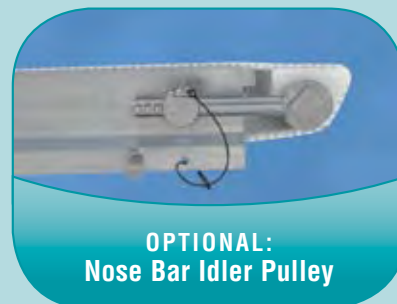
Specifications:

- Load: 20 lbs/square foot of belt (90 kg/m²)
- Belt Widths: 6" (152 mm) to 60" (1,524 mm)
- Lengths: 36" (914 mm) to 999" (25,375 mm)
- Belt speed: 233 ft/min maximum (71 m/min)
- Wear strip material is UHMW
- Continuous TIG welded 304 stainless steel frame
- #4 Polish on all outside surfaces
- Bearing material is 400 stainless steel
- Bearing lubricant is H1 type FDA lubricant
- FDA approved belting and plastic components



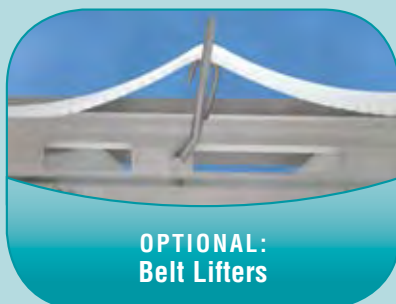
Features & Benefits:

- Frame is designed with no horizontal surfaces for optimum cleaning. Conveyors over 10' (3,048 mm) long consist of multiple sections which are bolted together.
- Bearings are mounted in cast stainless steel housings for maximum performance in washdown environments.
- Solid UHMW wear strips are easily lifted out of the frame without tools to minimize cleaning time.
- The tool-less tip up pulley allows conveyor end to be lifted easily for quick access to inside of conveyor for cleaning.
- Conveyor is designed to withstand high pressure (100-1,500 psi) spray and chlorinated solutions.
- The return belt supports are segmented plastic slide blocks and are easily removed without tools for effective cleaning.
- Drive sprockets are located on a 1.5" square stainless steel shaft without fasteners to provide optimum drive strength and cleanability.
- Frame cut-outs (optional) are available to allow spraying the inside of the conveyor without lifting the belt.
- Nose bar idler ends (optional) are constructed of a machined UHMW bar to provide a 1.5" diameter transfer.
- The nose bar drive configuration (optional) allows the use of the nose bar transfer on each end of the conveyor for small product transfers.
- Belt lifters (optional) raise the belt from the wear strips by simply pulling an external lever for fast access and effective cleaning.



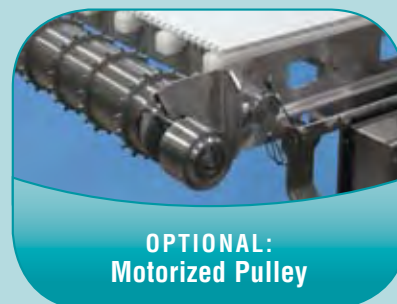
**OPTIONAL:
Nose Bar Idler Pulley**

1.5" (38 mm) diameter for tight transfers



**OPTIONAL:
Belt Lifters**

For easy cleaning on wide or long conveyors



**OPTIONAL:
Motorized Pulley**

For fast and effective sanitation

Order gearmotor mounting packages and gearmotors separately; see pages 142-144. For support stands, see pages 146-148.

Note: Proper conveyor application, cleaning and sanitation is the responsibility of the end user. When required, Dorner can passivate conveyors or provide most materials in 316 or 316L stainless steel.

For ordering information, see page 149



NOSE BAR



FRAME CUTOUTS

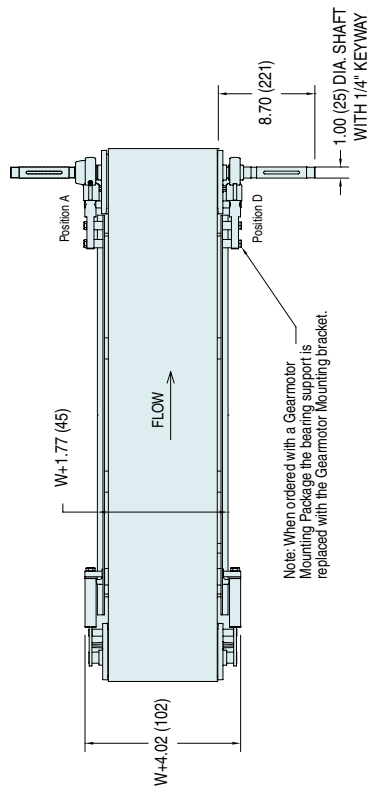


BELT LIFTER



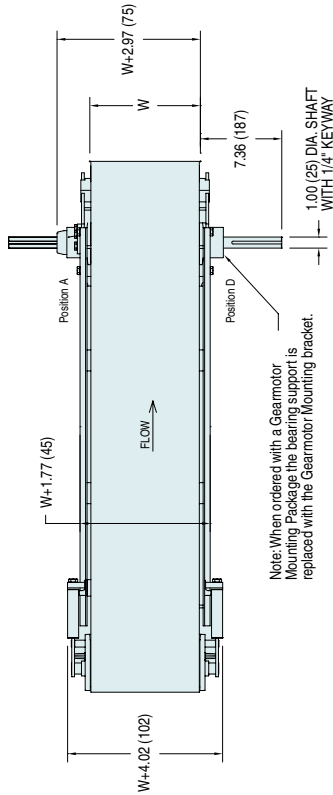
MOTORIZED
PULLEY

SIDE DRIVE MODEL



Note: When ordered with a Gearmotor Mounting Package the bearing support is replaced with the Gearmotor Mounting bracket.

NOSE BAR DRIVE MODEL



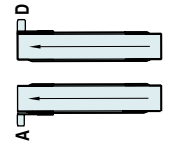
Note: When ordered with a Gearmotor Mounting Package the bearing support is replaced with the Gearmotor Mounting bracket.

STANDARD SIZES

Conveyor Width Reference	06	02 increments up to ...	60
Conveyor Belt Width (W)	6" (152mm)	2" (51mm) increments up to ...	60" (1,524mm)
Conveyor Length Reference	036	001 increments up to ...	999
Conveyor Length (L)	36" (914mm)	1" (25mm) increments up to ...	999" (25,375mm)

Note: Nose bar drive conveyors have a minimum conveyor length of 48"

Drive Shaft Position





Specifications:

- Load: 20 lbs/square foot of belt (90 kg/m²)
- Belt Widths: 6" (152 mm) to 24" (610 mm)
- Lengths: 36" (914 mm) to 999" (25,375 mm)
- Belt speed: 233 ft/min maximum (71 m/min)
- Wear strip material is UHMW
- Continuous TIG welded 304 stainless steel frame
- #4 Polish on all outside surfaces
- Bearing material is 400 stainless steel
- Bearing lubricant is H1 type FDA lubricant
- FDA approved belting and plastic components

Features & Benefits:

- Frame is designed with no horizontal surfaces for optimum cleaning. Conveyors over 10' (3,048 mm) long consist of multiple sections which are bolted together.
- Bearings are mounted in cast stainless steel housings for maximum performance in washdown environments.
- Solid UHMW wear strips are easily lifted out of the frame without tools to minimize cleaning time.
- The tool-less tip up pulley allows conveyor end to be easily lifted without tools for convenient sanitation.
- Conveyor is designed to withstand high pressure (100-1,500 psi) spray and chlorinated solutions.
- The return belt supports are segmented plastic slide blocks and are easily removed without tools for effective cleaning.
- Drive sprockets are located on a 1.5" square stainless steel shaft without fasteners to provide optimum drive strength and cleanability.
- Frame cut-outs (optional) are available to allow spraying the inside of the conveyor without lifting the belt.
- Belt lifters (optional) raise the belt from the wear strips by simply pulling an external lever for fast access and effective cleaning.



**OPTIONAL:
Belt Lifters**

For easy cleaning on wide or long conveyors



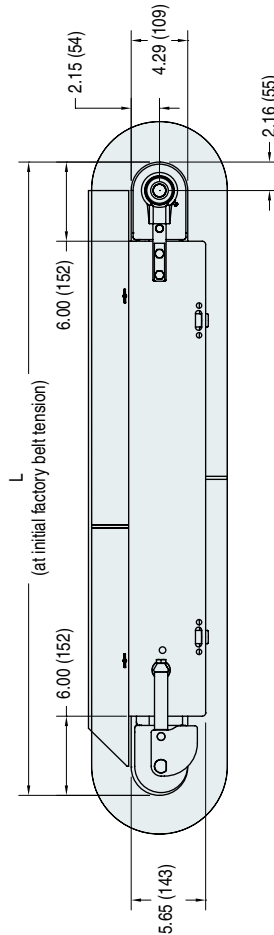
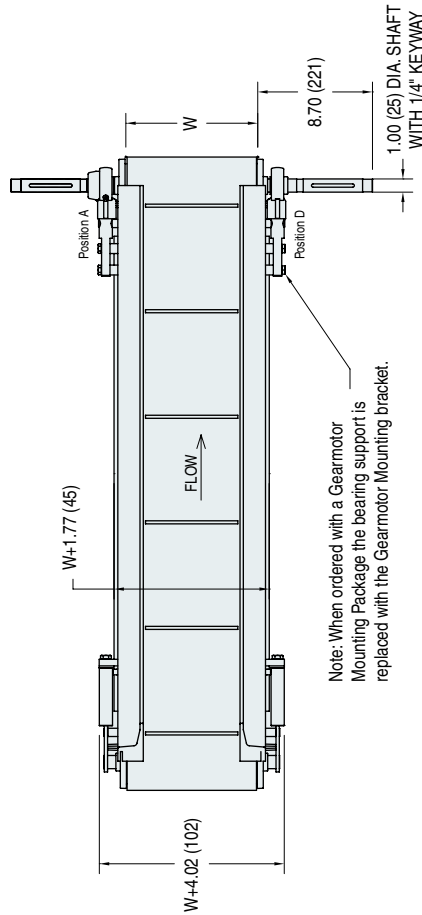
**OPTIONAL:
Motorized Pulley**

For fast and effective sanitation

Order gearmotor mounting packages and gearmotors separately; see pages 142-144. For support stands, see pages 146-148.

Note: Proper conveyor application, cleaning and sanitation is the responsibility of the end user. When required, Dorner can passivate conveyors or provide most materials in 316 or 316L stainless steel.

For ordering information, see page 150

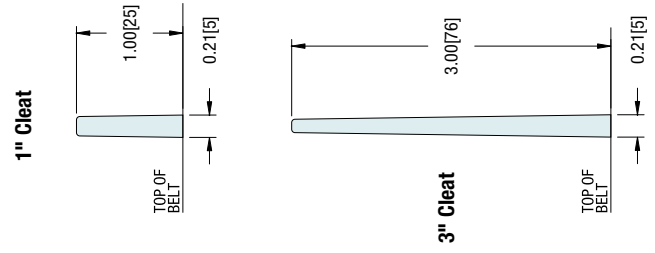


A = 7.43 (189) for 1" Cleats
9.09 (231) for 3" Cleats

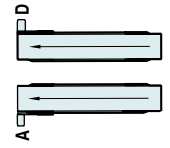
B = W - 2.67 (68) for 1" Cleats 6.00 (152) - 16.00 (406) Wide
W - 2.81 (71) for 1" Cleats 18.00 (457) - 24.00 (610) Wide
W - 2.67 (68) for 3" Cleats 6.00 (152) - 16.00 (406) Wide
W - 2.81 (71) for 3" Cleats 18.00 (457) - 24.00 (610) Wide

W = Conveyor Belt Width **Dim** = in (mm)

CLEAT PROFILES



Drive Shaft Position



STANDARD SIZES

Conveyor Width Reference	06	02 increments up to ...	24
Conveyor Belt Width (W)	6" (152mm)	2" (51mm) increments up to ...	24" (610mm)
Conveyor Length Reference	036	001 increments up to ...	999
Conveyor Length (L)	36" (914mm)	1" (25mm) increments up to ...	999" (25,375mm)

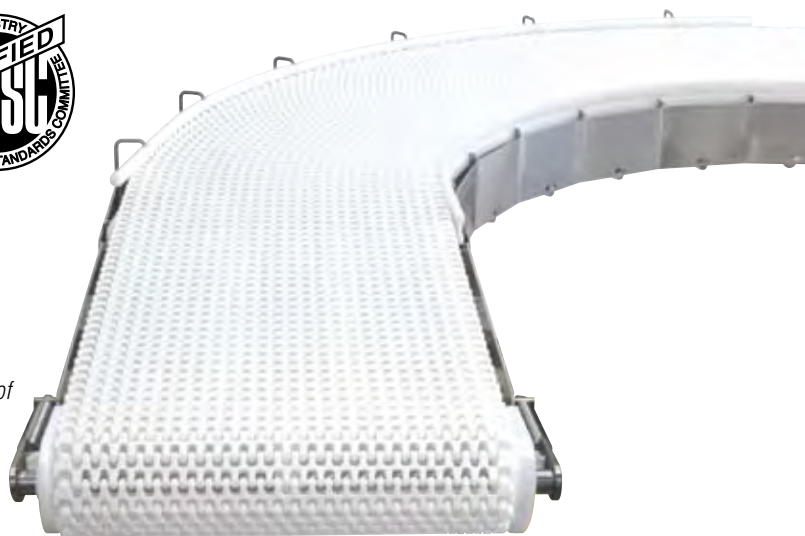
For more information, go to www.dorner.com. Call 800.397.8664 or 262.367.7600.

Due to the wide variety of drive set ups and applications, point of installation guarding is the responsibility of the end user.

AquaPruf® 7400 SERIES: CURVED MODULAR FLAT BELT

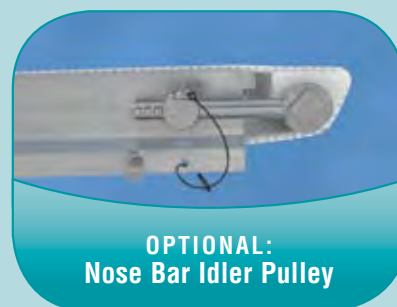
Specifications:

- Loads up to 20 lbs/square foot of belt (90 kg/m²)
- Belt Widths: 8" (203 mm) to 36" (610 mm)
- Total Lengths up to 999" (25,375 mm)
- Belt speed: 175 ft/min maximum (53 m/min)
- Degree of curves: 15° to 180°
8" and 10" widths available in 30° increments
12" through 36" widths available in 15° increments
- Maximum of 2 curves per conveyor with up to 240° total degrees of turns (*up to 4 curves is possible dependant upon length and degree of curves, consult factory*)
- Wear strip material is UHMW
- Continuous TIG welded 304 stainless steel frame
- #4 Polish on all outside surfaces
- Bearing material is 400 stainless steel
- Bearing lubricant is H1 type FDA lubricant
- FDA approved belting and plastic components



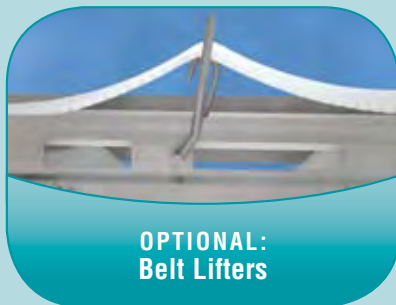
Features & Benefits:

- Frame is designed with no horizontal surfaces for optimum cleaning.
- Bearings are mounted in cast stainless steel housings for maximum performance in washdown environments.
- Solid UHMW wear strips are easily lifted out of the frame without tools to minimize cleaning time.
- The tool-less tip up pulley allows conveyor end to be lifted easily for quick access to inside of conveyor for cleaning.
- Conveyor is designed to withstand high pressure (100-1,500 psi) spray and chlorinated solutions.
- Drive sprockets are located on a 1.5" square stainless steel shaft without fasteners to provide optimum drive strength and cleanability.
- Frame cut-outs (optional) are available to allow spraying the inside of the conveyor without lifting the belt.
- Nose bar idler ends (optional) are constructed of a machined UHMW bar to provide a 1.5" diameter transfer.
- The nose bar drive configuration (optional) allows the use of the nose bar transfer on each end of the conveyor for small product transfers.
- Belt lifters (optional) raise the belt from the wear strips by simply pulling an external lever for fast access and effective cleaning.



**OPTIONAL:
Nose Bar Idler Pulley**

1.5" (38 mm) diameter for tight transfers



**OPTIONAL:
Belt Lifters**

For easy cleaning on wide or long conveyors



**OPTIONAL:
Motorized Pulley**

For fast and effective sanitation

Order gearmotor mounting packages and gearmotors separately; see pages 142-144. For support stands, see pages 146-148.

Note: Proper conveyor application, cleaning and sanitation is the responsibility of the end user. When required, Dorner can passivate conveyors or provide most materials in 316 or 316L stainless steel.

For ordering information, see page 150

AQUAPRUF 7400 SERIES CURVED MODULAR FLAT BELT

SANITARY OPTIONS:



NOSE BAR



BELT LIFTER

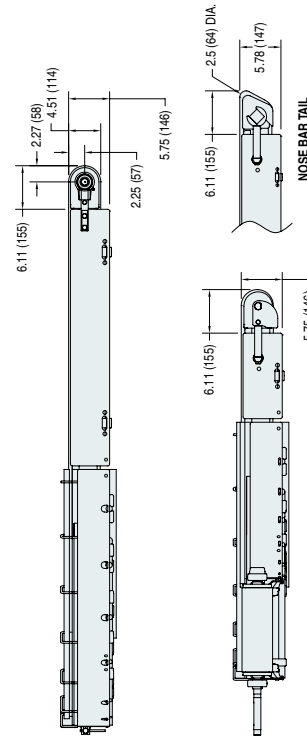
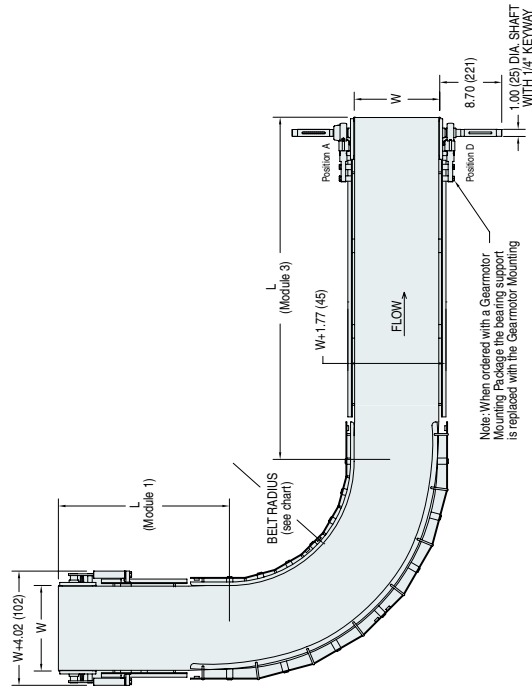


FRAME CUTOUTS

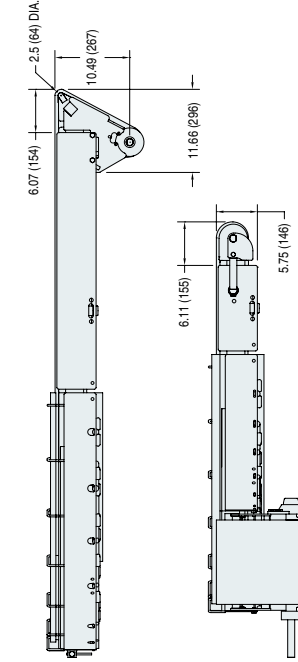
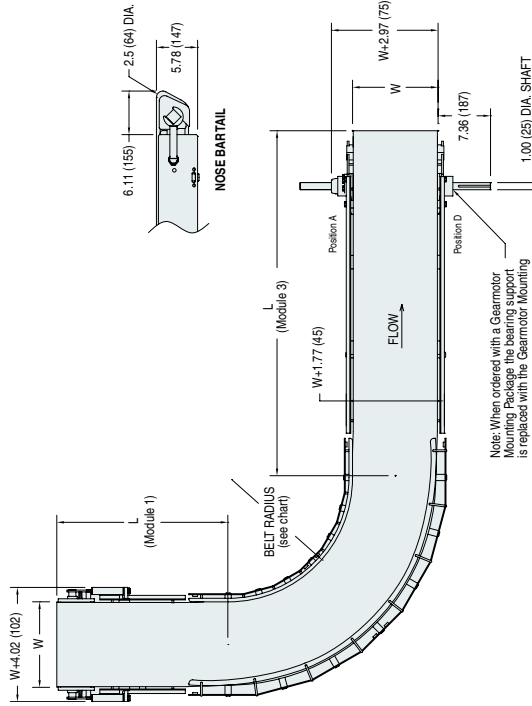


MOTORIZED PULLEY

SIDE DRIVE MODEL



NOSE BAR DRIVE MODEL

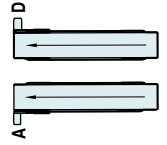


W = Conveyor Belt Width
Dim = in (mm)

Belt Radius

Conveyor Width (in)	Standard Belt Radius	Specialty Belt Radius
08	11.1 (281)	13.6 (345)
10	14.0 (357)	17.0 (432)
12	17.3 (440)	20.4 (518)
14	20.6 (524)	23.8 (605)
16	23.9 (607)	27.2 (691)
18	27.2 (692)	30.6 (777)
20	30.5 (774)	34.0 (864)
22	33.7 (857)	37.4 (950)
24	37.0 (941)	40.8 (1,036)
26	40.4 (1,026)	N/A
28	43.5 (1,105)	N/A
30	46.9 (1,191)	N/A
32	50.0 (1,270)	N/A
34	53.5 (1,358)	N/A
36	56.6 (1,438)	N/A

Drive Shaft Position



STANDARD SIZES

Conveyor Width Reference	08	02 increments up to ...	36
Conveyor Belt Width (W)	8" (203mm)	2" (51mm) increments up to ...	36" (914mm)
Conveyor Length Reference	020	001 increments up to ...	999
Module Length (L ₁)	Greater of 20" (508mm) or 1.5W	1" (25mm) increments up to ...	999" (25,375mm)
Module Length (L ₂)	Greater of 36" (914mm) or 2W	1" (25mm) increments up to ...	999" (25,375mm)

For more information, go to www.dorner.com. Call 800.397.8664 or 262.367.7600.
Due to the wide variety of drive set ups and applications, point of installation guarding is the responsibility of the end user.

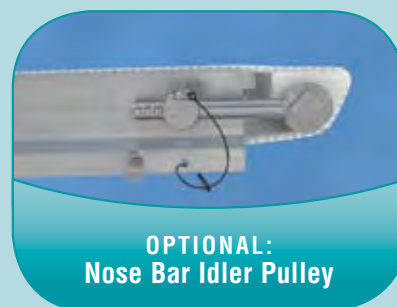


Specifications:

- Loads up to 20 lbs/square foot of belt (90 kg/m²)
- Belt Widths: 6" (152 mm) to 24" (610 mm)
- Section Lengths: 24" (610 mm) to 20' (6.1 m)
- Belt speed: 233 ft/min maximum (71 m/min)
- 5°, 10°, 15° & 30° Fixed Angle Modules standard
(inclines over 5° require friction insert belting)
- Wear strip material is UHMW
- Continuous TIG welded 304 stainless steel frame
- #4 Polish on all outside surfaces
- Bearing material is 400 stainless steel
- Bearing lubricant is H1 type FDA lubricant
- FDA approved belting and plastic components

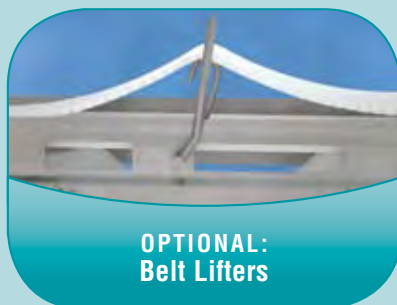
Features & Benefits:

- Frame is designed with no horizontal surfaces for optimum cleaning. Conveyors over 10' (3,048 mm) long consist of multiple sections which are bolted together.
- Bearings are mounted in cast stainless steel housings for maximum performance in washdown environments.
- Solid UHMW wear strips are easily lifted out of the frame without tools to minimize cleaning time.
- The tool-less tip up pulley allows conveyor end to be lifted easily for quick access to inside of conveyor for cleaning.
- Conveyor is designed to withstand high pressure (100-1,500 psi) spray and chlorinated solutions.
- The return belt supports are segmented plastic slide blocks and are easily removed without tools for effective cleaning.
- Drive sprockets are located on a 1.5" square stainless steel shaft without fasteners to provide optimum drive strength and cleanability.
- Frame cut-outs (optional) are available to allow spraying the inside of the conveyor without lifting the belt.
- Nose bar idler ends (optional) are constructed of a machined UHMW bar to provide a 1.5" diameter transfer.
- The nose bar drive configuration (optional) allows the use of the nose bar transfer on each end of the conveyor for small product transfers.
- Belt lifters (optional) raise the belt from the wear strips by simply pulling an external lever for fast access and effective cleaning.



**OPTIONAL:
Nose Bar Idler Pulley**

1.5" (38 mm) diameter for tight transfers



**OPTIONAL:
Belt Lifters**

For easy cleaning on wide or long conveyors



**OPTIONAL:
Motorized Pulley**

For fast and effective sanitation

Order gearmotor mounting packages and gearmotors separately; see pages 142-144. For support stands, see pages 146-148.

Note: Proper conveyor application, cleaning and sanitation is the responsibility of the end user. When required, Dorner can passivate conveyors or provide most materials in 316 or 316L stainless steel.

For ordering information, see page 152

AQUAPRUF 7400 SERIES Z-FRAME MODULAR FLAT BELT

SANITARY OPTIONS:



NOSE BAR



BELT LIFTER

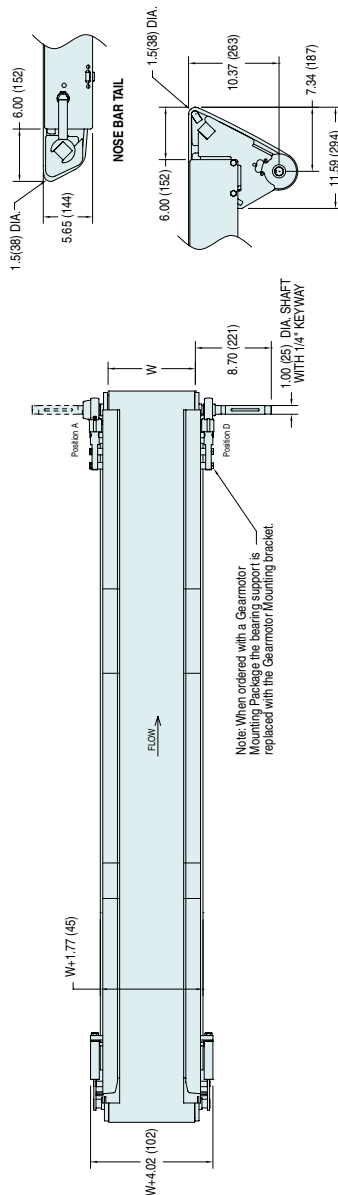


FRAME CUTOUTS



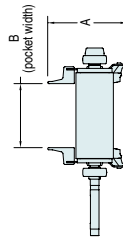
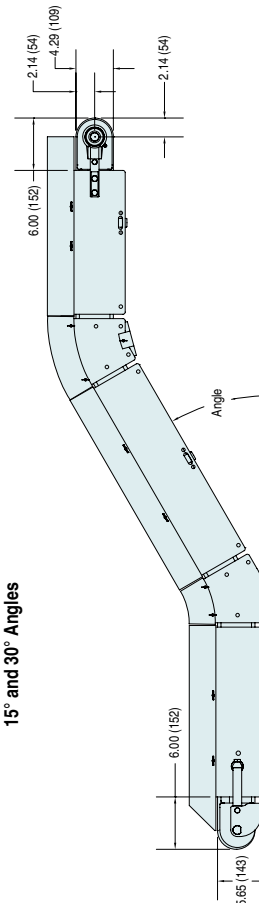
MOTORIZED PULLEY

MODULAR FLAT BELT MODEL



7400 Flat

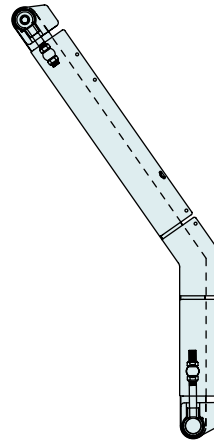
Available in 5°, 10°, 15° and 30° Angles



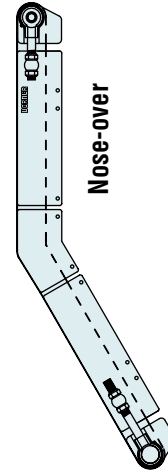
A=7.43(189) for 1" Guide Profile
9.09(231) for 3" Guide Profile
B=W-2.67(68) for 1" Guide Profile
W-2.67(67) for 3" Guide Profile

W = Conveyor Belt Width Dim = in (mm)

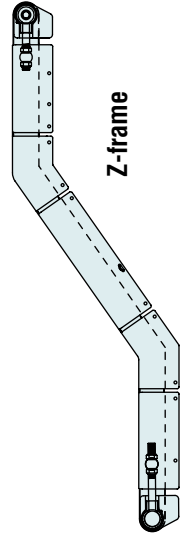
CONFIGURATIONS AVAILABLE



Horizontal to Incline



Nose-over

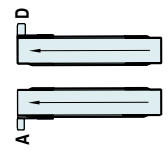


Z-frame

STANDARD SIZES

Conveyor Width Reference	06	02 increments up to...	24
Conveyor Belt Width (W)	6" (152mm)	2" (51mm) increments up to...	24" (610mm)
Conveyor Length Reference	024	001 increments up to...	480
Conveyor Length (L ₁ , L ₂ , L ₃)	24" (610mm)	1" (25mm) increments up to...	480" (12,192mm)

Drive Shaft Position



For more information, go to www.dorner.com. Call 800.397.8664 or 262.367.7600.
Due to the wide variety of drive set ups and applications, point of installation guarding is the responsibility of the end user.



Specifications:

- Loads up to 20 lbs/square foot of belt (90 kg/m²)
- Belt Widths: 6" (152 mm) to 24" (610 mm)
- Section Lengths: 24" (610 mm) to 20' (6.1 m)
- Total Conveyor Lengths up to 38' (11.6 m)
- Belt speed: 233 ft/min maximum (71 m/min)
- 15°, 30°, 45° & 60° Fixed Angle Modules standard
- Wear strip material is UHMW
- Continuous TIG welded 304 stainless steel frame
- #4 Polish on all outside surfaces
- Bearing material is 400 stainless steel
- Bearing lubricant is H1 type FDA lubricant
- FDA approved belting and plastic components
- Cleat height available in 25 mm & 76 mm

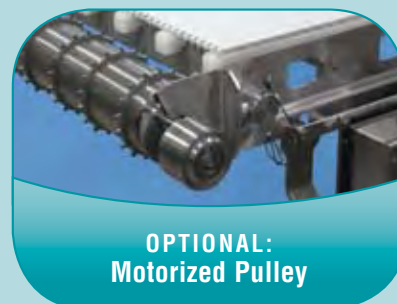
Features & Benefits:

- Frame is designed with no horizontal surfaces for optimum cleaning. Conveyors over 10' (3,048 mm) long consist of multiple sections which are bolted together.
- Bearings are mounted in cast stainless steel housings for maximum performance in washdown environments.
- Solid UHMW wear strips are easily lifted out of the frame without tools to minimize cleaning time.
- The tool-less tip up pulley allows conveyor end to be easily lifted without tools for convenient sanitation.
- Conveyor is designed to withstand high pressure (100-1,500 psi) spray and chlorinated solutions.
- The return belt supports are segmented plastic slide blocks and are easily removed without tools for effective cleaning.
- Drive sprockets are located on a 1.5" square stainless steel shaft without fasteners to provide optimum drive strength and cleanability.
- Frame cut-outs (optional) are available to allow spraying the inside of the conveyor without lifting the belt.
- Belt lifters (optional) raise the belt from the wear strips by simply pulling an external lever for fast access and effective cleaning.



**OPTIONAL:
Belt Lifters**

For easy cleaning on wide or long conveyors



**OPTIONAL:
Motorized Pulley**

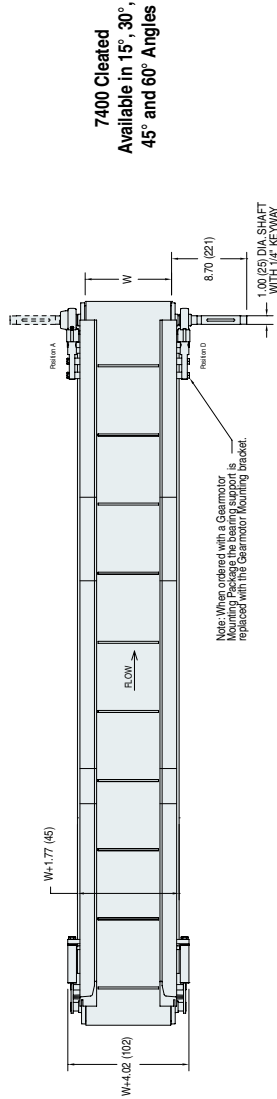
For fast and effective sanitation

Order gearmotor mounting packages and gearmotors separately; see pages 142-144. For support stands, see pages 146-148.

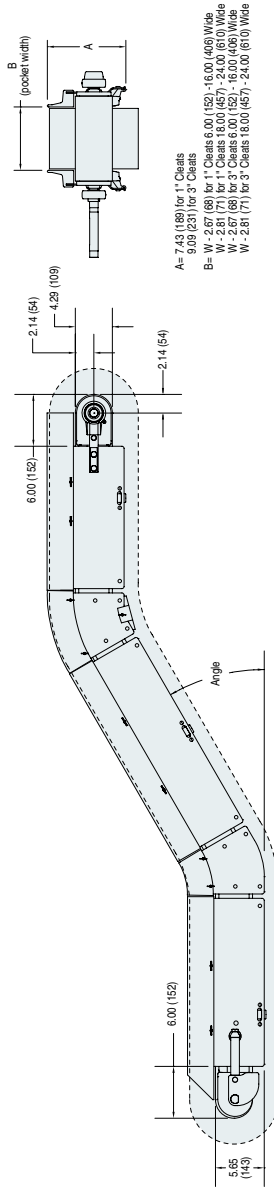
Note: Proper conveyor application, cleaning and sanitation is the responsibility of the end user. When required, Dorner can passivate conveyors or provide most materials in 316 or 316L stainless steel.

For ordering information, see page 152

SANITARY OPTIONS:



7400 Cleated
Available in 15°, 30°, 45° and 60° Angles

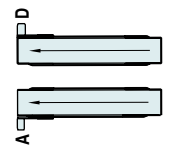


W = Conveyor Belt Width Dim = in (mm)

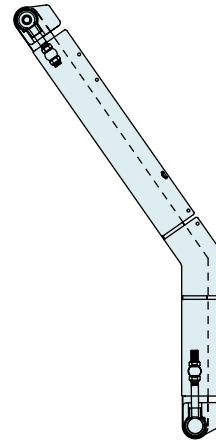
STANDARD SIZES

Conveyor Width Reference	06	02 increments up to...	24
Conveyor Belt Width (W)	6" (152mm)	2" (51mm) increments up to...	24" (610mm)
Conveyor Length Reference	024	001 increments up to...	480
Conveyor Length (L ₁ , L ₂ , L ₃)	24" (610mm)	1" (25mm) increments up to...	480" (12,192mm)

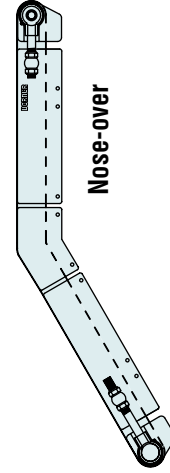
Drive Shaft Position



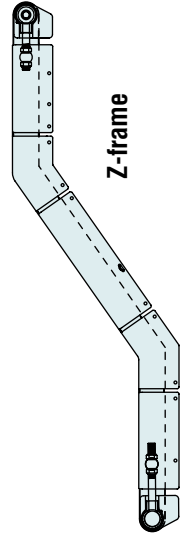
CONFIGURATIONS AVAILABLE



Horizontal to Incline



Nose-over



Z-frame

AquaPruf® 7400 SERIES: SANITARY ROLLER CONVEYORS



Specifications:

- Loads up to 20 lbs/roller
- Roller widths: 8", 12", 18", 24", 30", & 36"
- Conveyor lengths: 36" to 120" in 3" increments
- Frame is all welded with round cross members
- Frames outer surface is a #4 finish with 2B on internal components
- Roller centers 3" and 6"
- Standard Hollow Tube roller 1.9" diameter
- Solid Acetal roller 2" diameter
- Hollow Tube rollers are 304 SS hollow tubes with a 2B finish*
- Solid Acetal roller ends are located in a UHMW guide bar
- Hollow Tube roller ends are spring loaded 7/16" hex shaft
- Stands are stainless steel tube with adjustable foot and thread guards
- Solid Acetal roller is designed to USDA Red Meat & Poultry standards

* **Note:** Hollow Rollers may fill with liquid if sprayed with high pressure cleaners.

Features & Benefits:

- Frame is constructed of continuous TIG welded 304 stainless steel for durability in tough applications
- Integral 1" high side for product containment or low side for maximum flexibility
- Solid Acetal rollers and guides simply lift out of UHMW guide for quick access to frame during cleaning
- Hollow Tube spring loaded roller can be removed quickly for access to frame during cleaning
- Optional welded end stop available for durability

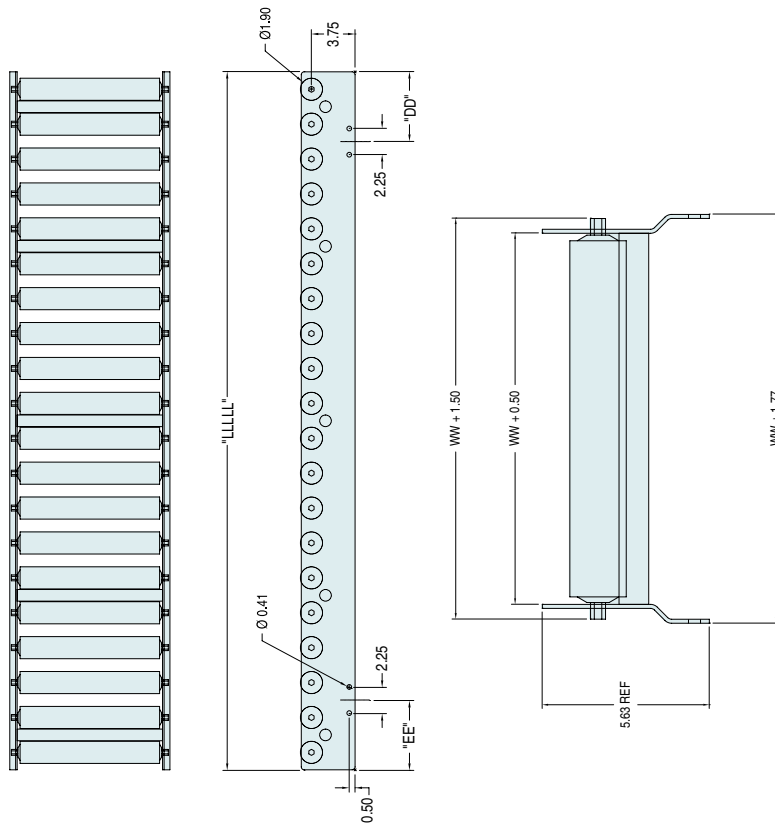


Order gearmotor mounting packages and gearmotors separately; see pages 142-144. For support stands, see pages 146-148.

Note: Proper conveyor application, cleaning and sanitation is the responsibility of the end user. When required, Dorner can passivate conveyors or provide most materials in 316 or 316L stainless steel.

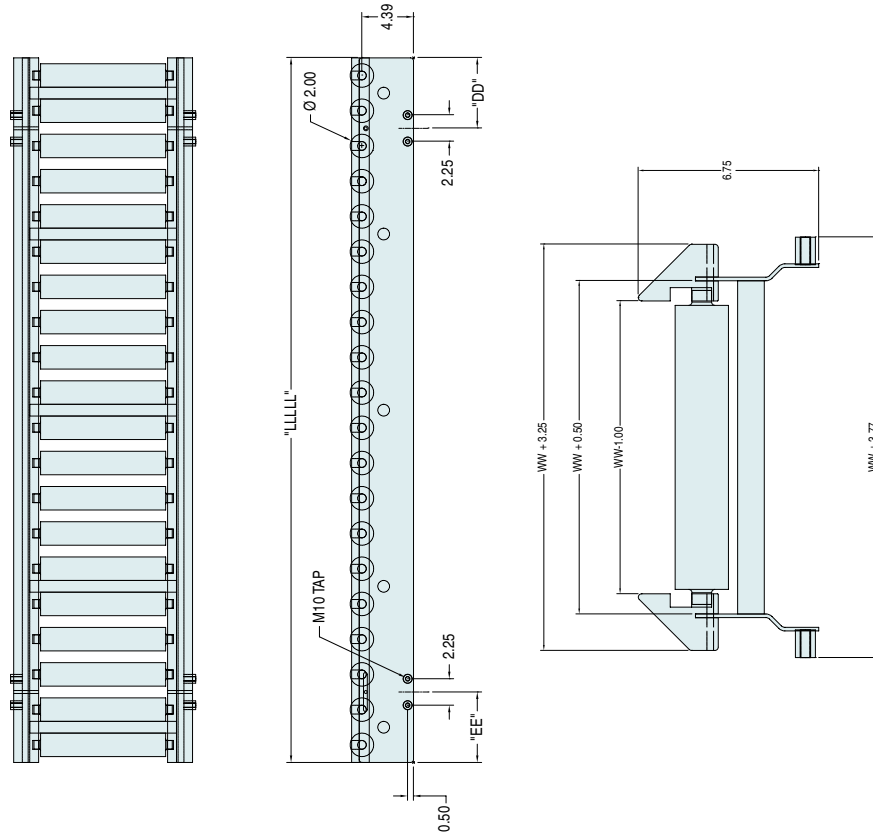
For ordering information, see page 152

HOLLOW TUBE ROLLERS



- * Recommended minimum angle of decline is 5 degrees for products greater than 10 lbs.
- * Recommended minimum angle of decline is 7-10 degrees for products less than 5 lbs.
- * Recommended 3 rollers are in contact with the product.

SOLID ACETAL ROLLERS

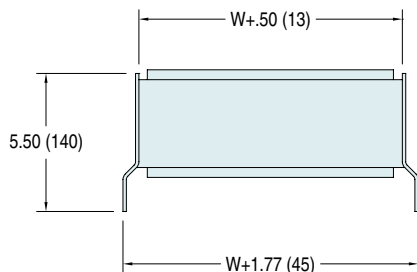


- * Recommended minimum angle of decline is 5 degrees for products greater than 10 lbs.
- * Recommended minimum angle of decline is 10 degrees for products less than 5 lbs.
- * Recommended 3 rollers are in contact with the product.

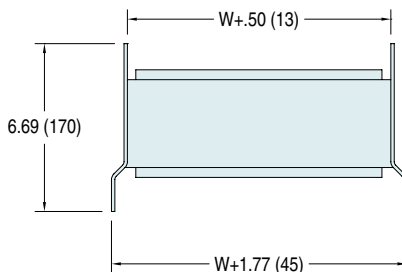
STANDARD SIZES			
Conveyor Width Reference	08	02 increments up to...	36
Conveyor Roller Width (W)	6" (152mm)	2" (51mm) increments up to...	36" (914mm)
Conveyor Length Reference	036	001 increments up to...	120
Conveyor Length (L)	36" (914mm)	1" (25mm) increments up to...	120" (3,048mm)

For more information, go to www.dorner.com. Call 800.397.8664 or 262.367.7600.
Due to the wide variety of drive set ups and applications, point of installation guarding is the responsibility of the end user.

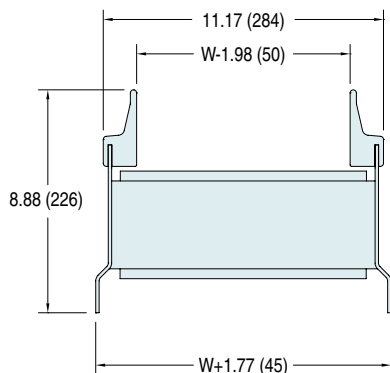
FLAT MODULAR BELT PROFILES



PROFILE 1
LOW SIDE

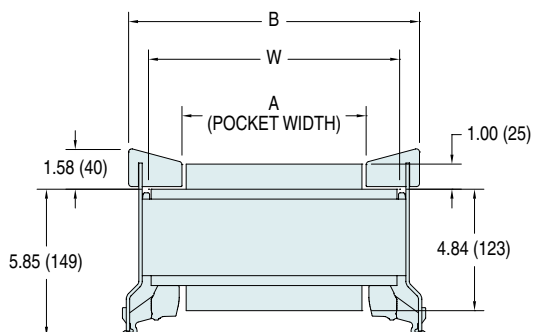


PROFILE 2
HIGH SIDE

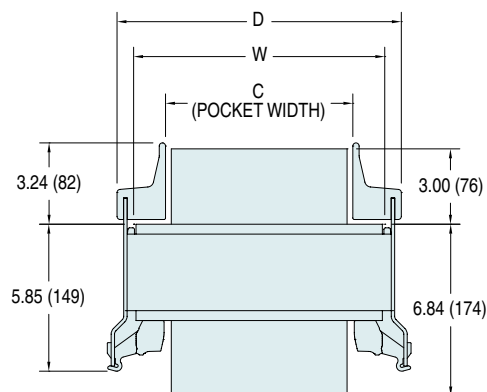


PROFIL F 3

CLEATED MODULAR BELT PROFILES



A= W - 2.56 (65) for 6.00 (152) - 16.00 (406) Wide
W - 2.72 (69) for 18.00 (457) - 24.00 (610) Wide
B= W + 1.69 (43) for 6.00 (152) - 16.00 (406) Wide
W + 1.54 (39) for 18.00 (457) - 24.00 (610) Wide

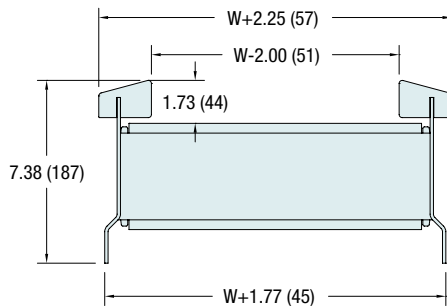


C= W - 2.56 (65) for 6.00 (152) - 16.00 (406) Wide
W - 2.72 (69) for 18.00 (457) - 24.00 (610) Wide
D= W + 1.34 (34) for 6.00 (152) - 16.00 (406) Wide
W + 1.18 (30) for 18.00 (457) - 24.00 (610) Wide

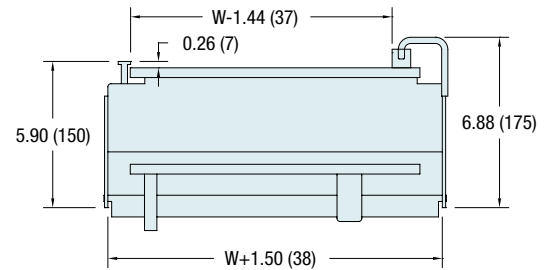
CLEAT WIDTH WILL VARY PER BELT TYPE

Due to the wide variety of drive set ups and applications, point of installation guarding is the responsibility of the end user.

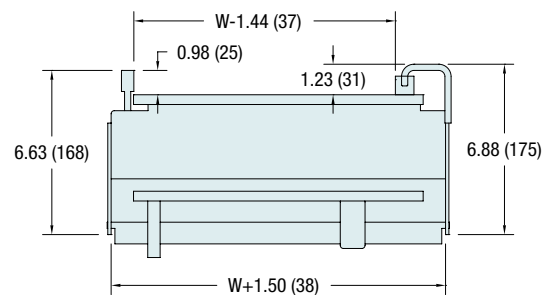
CURVE MODULAR BELT PROFILES



CURVE STRAIGHT MODULE PROFILE 2

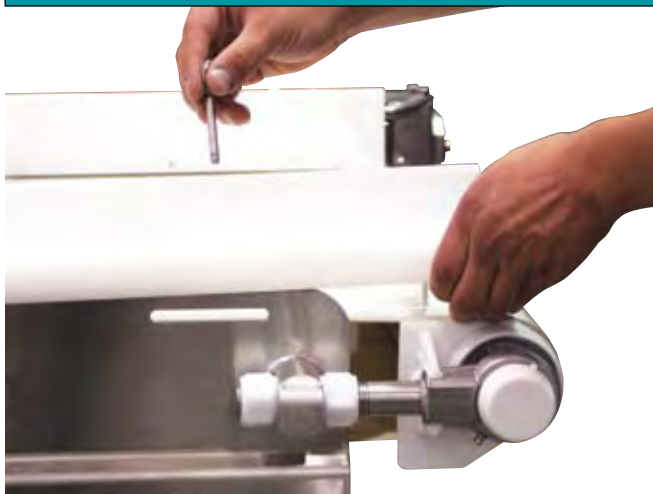


CURVE MODULE PROFILE 1



CURVE MODULE PROFILE 2

EASY REMOVAL OF PROFILES



The UHMW profiles are easily removed from the conveyor for sanitation by pulling pins on each end.

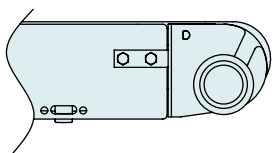
All pins are tethered to the frame to aide in sanitation.



AquaPruf® Sanitary Motorized Pulley Available in 7400, 7600 & ULTIMATE Series

General Specifications

- Motorized Pulley Widths: 12" to 46" in 2" increments
- All external components are stainless steel
- Pulley located in conveyor frame with welded supports
- Pulley supports have quick locating and removal slot
- All frame components are a #4 finish
- Completely sealed components ideal for sanitary applications
- 50,000 hours of operation between oil changes
- 96% mechanically efficient
- Saves up to 30% power consumption over conventional motors
- 230 or 460 Volt 3 Phase
- VFD variable speed capable
- Speeds to 270 feet per minute



MOTORIZED PULLEY TAIL

Features & Benefits

- 304 stainless steel for durability in tough applications
- Sealed drum motor is ideal for heavy duty washdown applications
- Pulley locating supports allow for fast removal and relocating for sanitation
- No fasteners are used to locate sprockets on motorized pulley
- Innovative sprocket locating key way allows for fast and effective sanitation

Progressive Key Sprocket Retention System*

- Locates low profile sprockets in place without the use of set-screws or fasteners
- Eliminates the possibility of fasteners loosening up and falling into the food zone
- The primary key is easily removed by shifting the main retaining ring then each progressive sprocket and key can be removed for fast effective sanitation
- When re-installed the sprockets are automatically located for proper mating with the conveyor chain
- Retention System works for both plastic chain and positive driven urethane belting

**Patent Pending*

Dorner's Standard Modular Belting offers these valuable advantages:



Oblong Hole

improves access to hinge area during sanitation.



Open Hinge Design

allows easy cleaning through an enlarged hinge gap.



Friction Inserts

are available for incline applications. Inserts may be placed along entire length of the belt or spaced for belt drainage.

Friction inserts are indented 2" (51 mm) from each belt edge.



Flat Top Belts

provide a very closed surface for complete product support and easy wiping.



Flush Grid Belts

provide an open surface for better drainage, cleaning and sanitation.

Standard Modular Belt Options

Belt Type		Part Number Reference	Description	% Open	Pitch in (mm)	Belt Thickness in (mm)	Color	Belt Material	Rod Material	Minimum Product Temperature F(C)****	Maximum Product Temperature F(C)****	FDA / CFIA Approved*	Chemical Resistance	Wear Resistance	Maximum Incline / Decline (degrees)**	Nose Bar Idler Diameter in (mm)
Straight Flat Belts	Standard Drive & Idler Pulley	MA	Flat top	0	1.0 (25)	0.43 (11)	White	Acetal	Polyethylene	-40 (-40)	215 (102)	Y	Good	V-Good	5	N/A
		MB	Flat top	0	1.0 (25)	0.43 (11)	White	Polypropylene	Polypropylene	40 (5)	275 (135)	Y	V-Good	Good	5	N/A
		MC	Flush Grid	35	1.0 (25)	0.39 (10)	White	Acetal	Polypropylene	-40 (-40)	215 (102)	Y	Good	V-Good	5	N/A
		MD	Flush Grid	35	1.0 (25)	0.39 (10)	White	Polypropylene	Polypropylene	40 (5)	275 (135)	Y	V-Good	Good	5	N/A
	Nose Bar Drive or Nose Bar Idler	MG	Flat top	0	0.5 (13)	0.39 (10)	White	Acetal	Polyethylene	-40 (-40)	215 (102)	Y	Good	V-Good	5	0.75 (19)
		MH	Flat top	0	0.5 (13)	0.39 (10)	White	Polypropylene	Polypropylene	40 (5)	275 (135)	Y	V-Good	Good	5	0.75 (19)
		MJ	Flush Grid	25	0.5 (13)	0.39 (10)	White	Acetal	Polypropylene	-40 (-40)	215 (102)	Y	Good	V-Good	5	0.75 (19)
		MK	Flush Grid	25	0.5 (13)	0.39 (10)	White	Polypropylene	Polypropylene	40 (5)	275 (135)	Y	V-Good	Good	5	0.75 (19)
Cleated Straight Belts (see page 125 for cleat options)	Standard Drive & Idler Pulley	NA	Flat top w/ 1" Cleats	0	1.0 (25)	0.43 (11)	White	Acetal	Polyethylene	-40 (-40)	215 (102)	Y	Good	V-Good	45***	N/A
		NB	Flat top w/ 1" Cleats	0	1.0 (25)	0.43 (11)	White	Polypropylene	Polypropylene	40 (5)	275 (135)	Y	V-Good	Good	45***	N/A
		NC	Flat top w/ 3" Cleats	0	1.0 (25)	0.43 (11)	White	Acetal	Polyethylene	-40 (-40)	215 (102)	Y	Good	V-Good	45***	N/A
		ND	Flat top w/ 3" Cleats	0	1.0 (25)	0.43 (11)	White	Polypropylene	Polypropylene	40 (5)	275 (135)	Y	V-Good	Good	45***	N/A
		NE	Flush Grid w/ 1" cleats	35	1.0 (25)	0.39 (10)	White	Acetal	Polypropylene	-40 (-40)	215 (102)	Y	Good	V-Good	45***	N/A
		NF	Flush Grid w/ 1" cleats	35	1.0 (25)	0.39 (10)	White	Polypropylene	Polypropylene	40 (5)	275 (135)	Y	V-Good	Good	45***	N/A
		NG	Flush Grid w/ 3" cleats	35	1.0 (25)	0.39 (10)	White	Acetal	Polypropylene	-40 (-40)	215 (102)	Y	Good	V-Good	45***	N/A
		NH	Flush Grid w/ 3" cleats	35	1.0 (25)	0.39 (10)	White	Polypropylene	Polypropylene	40 (5)	275 (135)	Y	V-Good	Good	45***	N/A
Friction Top Straight Belts	Standard & Nose Bar Idler Pulley	SEE TABLE BELOW	Flat top w/ friction inserts	0	1.0 (25)	0.55 (14)	White	Polypropylene	Polypropylene	40 (5)	140 (60)	Y	V-Good	Poor	20	1.6 (41)
		SEE TABLE BELOW	Flush Grid w/ friction inserts	35	1.0 (25)	0.55 (14)	White	Polypropylene	Polypropylene	40 (5)	140 (60)	Y	V-Good	Poor	20	1.6 (41)
Curved Flat Belts	Standard & Nose Bar Idler Pulley	MR	Tight Radius	35	1.0 (25)	0.50 (13)	White	Acetal	Nylon	-40 (-40)	215 (102)	Y	Good	V-Good	N/A	1.6 (41)
		MS	Tight Radius	35	1.0 (25)	0.50 (13)	White	Polypropylene	Acetal	40 (5)	275 (135)	Y	V-Good	Good	N/A	1.6 (41)

* FDA = Food and Drug Administration, CFIA = Canadian Food Inspection Agency

** Temperature, environmental conditions, product materials and product configuration effect the maximum incline or decline. Product testing is recommended.

*** Inclines / declines of higher than 45 degrees require wearstrip modifications. Consult factory for details.

**** These do not indicate ambient running conditions. Ambient temperature range is 30 to 100 F (-1 to 38 C).

Product temperature is dependent on length of time product is in direct contact with belt surface. Product testing is recommended.

FRICITION TOP STRAIGHT MODULAR BELT: Part number reference chart

Flat Top w/ Friction Inserts Part Number Reference	TA	TB	TC	TD	TE
Flush Grid w/ Friction Inserts Part Number Reference	N/A	TF	TG	TH	TJ
Friction Insert Spacing [links]	1	2	4	6	12
Friction Insert Spacing	1" (25 mm)	2" (51 mm)	4" (102 mm)	6" (152 mm)	12" (305 mm)

Dorner's Specialty Modular Belt Program offers Intralox® Options and other Manufacturers for Added Flexibility. Please call to inquire.

Specialty Modular Belt Options

Belt Type		Part Number Reference	Description	% Open	Pitch in (mm)	Belt Thickness in (mm)	Color	Belt Material	Rod Material	Minimum Product Temperature F(C)****	Maximum Product Temperature F(C)****	FDA Approved*	CFIA Approved*	Chemical Resistance	Wear Resistance	Maximum Incline / Decline (degrees)**	Nose Bar Idler Diameter in (mm)	Manufacturer / Series	
Straight Flat Belts		Standard Drive & Idler Pulley	PA	Flat top	0	1.0 (25)	0.40 (10)	White	Acetal	Polypropylene	-50 (-46)	215 (102)	Y		Good	V-Good	5	N/A	Intralox 1600
			PB	Flat top	0	1.0 (25)	0.40 (10)	White	Polypropylene	Polypropylene	34 (1)	275 (135)	Y		V-Good	Good	5	N/A	Intralox 1600
			PC	Flush Grid	28	0.6 (15)	0.34 (9)	White	Acetal	Polypropylene	-50 (-46)	215 (102)	Y	Y	Good	V-Good	5	N/A	Intralox 1100
			PD	Flush Grid	28	0.6 (15)	0.34 (9)	White	Polypropylene	Polypropylene	34 (1)	275 (135)	Y	Y	V-Good	Good	5	N/A	Intralox 1100
		Nose Bar Drive and/or Nose Bar Idler	PJ	Flat top	0	0.6 (15)	0.34 (9)	White	Acetal	Polypropylene	-50 (-46)	215 (102)	Y	Y	Good	V-Good	5	0.75 (19)	Intralox 1100
			PK	Flat top	0	0.6 (15)	0.34 (9)	White	Polypropylene	Polypropylene	34 (1)	275 (135)	Y	Y	V-Good	Good	5	0.75 (19)	Intralox 1100
			PL	Flush Grid	28	0.6 (15)	0.34 (9)	White	Acetal	Polypropylene	-50 (-46)	215 (102)	Y	Y	Good	V-Good	5	0.75 (19)	Intralox 1100
			PM	Flush Grid	28	0.6 (15)	0.34 (9)	White	Polypropylene	Polypropylene	34 (1)	275 (135)	Y	Y	V-Good	Good	5	0.75 (19)	Intralox 1100
Cleated Straight Belts (see page 125 for cleat type options)		Standard Drive & Idler Pulley	RA	Flat top w/ 1" Cleats	0	1.0 (25)	0.40 (10)	White	Acetal	Polypropylene	-50 (-46)	215 (102)	Y		Good	V-Good	45***	N/A	Intralox 1600
			RB	Flat top w/ 1" Cleats	0	1.0 (25)	0.40 (10)	White	Polypropylene	Polypropylene	34 (1)	275 (135)	Y		V-Good	Good	45***	N/A	Intralox 1600
			RC	Flat top w/ 3" Cleats	0	1.0 (25)	0.40 (10)	White	Acetal	Polypropylene	-50 (-46)	215 (102)	Y		Good	V-Good	45***	N/A	Intralox 1600
			RD	Flat top w/ 3" Cleats	0	1.0 (25)	0.40 (10)	White	Polypropylene	Polypropylene	34 (1)	275 (135)	Y		V-Good	Good	45***	N/A	Intralox 1600
			RE	Flush Grid w/ 1" cleats	28	0.6 (15)	0.34 (9)	White	Acetal	Polypropylene	-50 (-46)	215 (102)	Y	Y	Good	V-Good	45***	N/A	Intralox 1100
			RF	Flush Grid w/ 1" cleats	28	0.6 (15)	0.34 (9)	White	Polypropylene	Polypropylene	34 (1)	275 (135)	Y	Y	V-Good	Good	45***	N/A	Intralox 1100
Curved Flat Belts*****		Standard & Nose bar Idler Pulley	PT	Tight Radius	42	1.0 (25)	0.5 (13)	White	Acetal	Nylon	-40 (-40)	215 (102)	Y		Good	V-Good	N/A	1.6 (41)	Intralox 2400
			PU	Tight Radius	42	1.0 (25)	0.5 (13)	White	Polypropylene	Acetal	34 (1)	275 (135)	Y		V-Good	Good	N/A	1.6 (41)	Intralox 2400

* FDA = Food and Drug Administration, CFIA = Canadian Food Inspection Agency.

** Temperature, environmental conditions, product materials and product configuration effect the maximum incline or decline. Product testing is recommended.

*** Inclines / declines of higher than 45 degrees require wearstrip modifications. Consult factory for details.

**** These do not indicate ambient running conditions. Ambient temperature range is 30 to 100 F (-1 to 38 C).

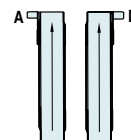
Product temperature is dependent on length of time product is in direct contact with belt surface. Product testing is recommended

***** Type PT and PU Belts are available up to 24" wide only.

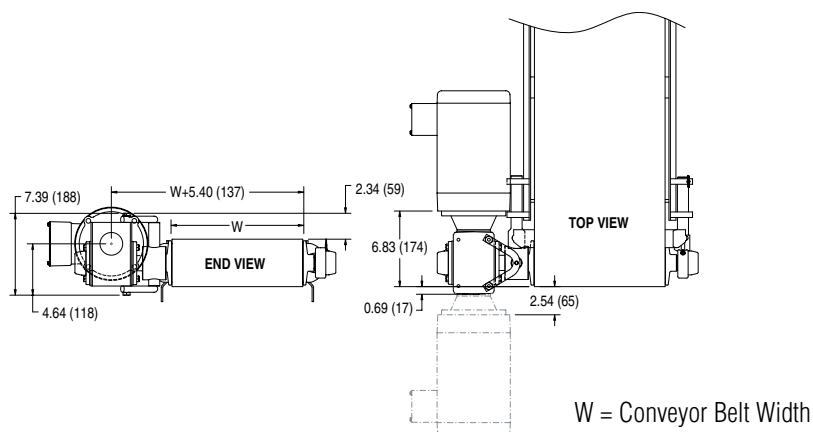
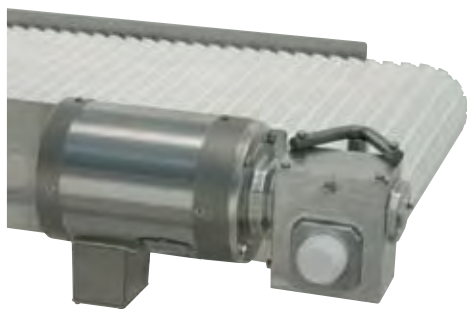
GEARMOTOR MOUNTING PACKAGE & GEARMOTOR SELECTION STEPS

- Step 1:** Select a **Gearmotor Mounting Package** (page 142).
- Step 2:** Locate the appropriate gearmotor chart (pages 143-144) in terms of **Painted** vs. **Stainless Steel** and **Fixed Speed** vs. **Variable Speed**.
- Step 3:** Use the **Belt Speed Column** to locate the **Part Number** for your desired Gearmotor.

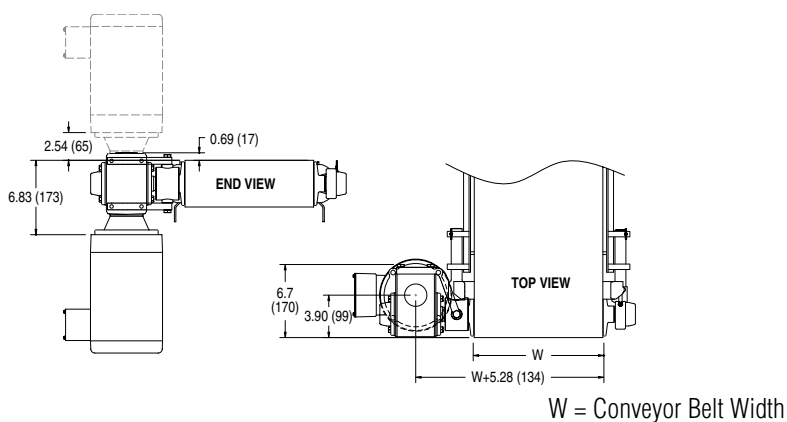
Drive Shaft Position



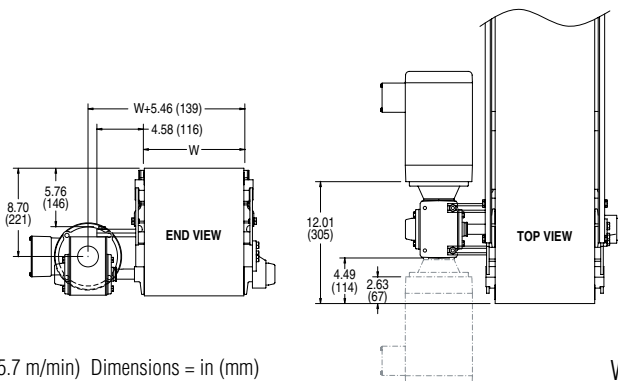
Horizontal Side Drive Mount



Vertical Side Drive Mount



Nose Bar Drive Mount



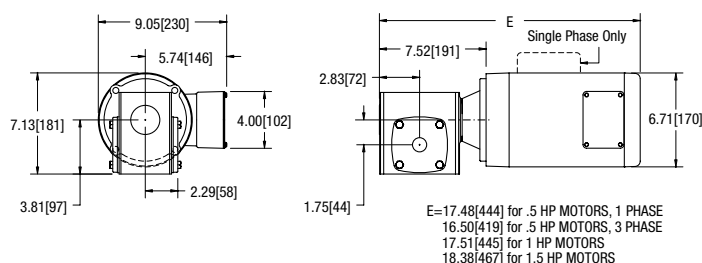
Note: Nose Bar Drive Belt Speed is Limited to 117 ft/min (35.7 m/min) Dimensions = in (mm)

For ordering information, see page 153

STANDARD LOAD, FIXED SPEED

Chart 1 Painted Gearmotor

- Nema 56C
- IP 55 Protection Rating
- Sealed Reducer with FDA H1 Lubricant
- FDA Approved Stainless Painted Gear Box
- FDA Approved White Epoxy Painted Motor
- UL and CSA Approved
- Totally Enclosed Non-Ventilated
- Order optional Manual Motor Starter separately, see page 145
- 0.5 Hp 230 / 460 V, 3 Phase
- 1.0 & 1.5 HP 208-230 / 460 Volts, 3 Phase

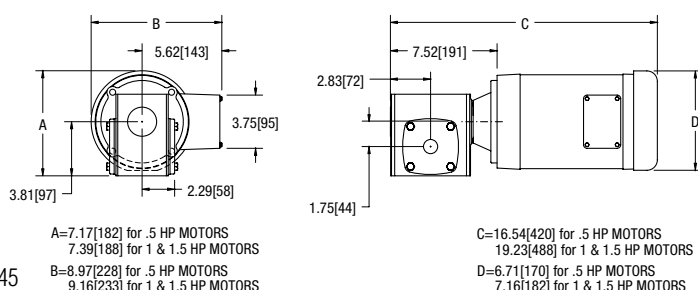


Part Number	Belt Speed		RPM	1 Phase			3 Phase			in.-lbs.	Nm
	Ft/min	m/min		Hp	kW	FLA	Hp	kW	FLA		
74M080HS4(vp)FN	22	6.7	22	0.5	0.37	6.8 / 3.7-3.4	0.5	0.37	1.6 / 0.8	356	40.2
74M060HS4(vp)FN	29	8.8	29	0.5	0.37	6.8 / 3.7-3.4	0.5	0.37	1.6 / 0.8	442	49.9
74M040HS4(vp)FN	44	13.4	44	0.5	0.37	6.8 / 3.7-3.4	0.5	0.37	1.6 / 0.8	486	54.9
74M030HS4(vp)FN	58	17.7	58	n/a	n/a	n/a	1	0.74	3.5-3.2 / 1.6	487	55.0
74M020HS4(vp)FN	87	26.5	87	n/a	n/a	n/a	1	0.74	3.5-3.2 / 1.6	407	46.0
74M015HS4(vp)FN	117	35.7	117	n/a	n/a	n/a	1	0.74	3.5-3.2 / 1.6	470	53.1
74M010HS4(vp)FN	175	53.3	175	n/a	n/a	n/a	1.5	1.11	4.6-4.2 / 2.1	442	49.9
74M007HS4(vp)FN	233	71.0	233	n/a	n/a	n/a	1.5	1.11	4.6-4.2 / 2.1	360	40.7

(vp) = voltage and Phase 11 = 115 / 208-230, 1 Phase 23 = 0.5 HP: 230 / 460 Volts, 3 Phase; 1.0 & 1.5 HP: 208-230 / 460 Volts, 3 Phase

Chart 2 Stainless Steel Gearmotor

- Nema 56C
- IP 55 Protection Rating
- Sealed Reducer with FDA H1 Lubricant
- Stainless Steel Gear Box
- Stainless Steel Motor
- UL and CSA Approved
- 1/2 HP is Totally Enclosed Non-Ventilated
- 1 and 1 1/2 HP are Totally Enclosed Fan Cooled
- 208-230 / 460 V, 3 Phase
- Order optional Manual Motor Starter separately, see page 145
- 0.5 Hp 230 / 460 V, 3 Phase
- 1.0 & 1.5 HP 208-230 / 460 V, 3 Phase



Part Number	Belt Speed		RPM	3 Phase				in.-lbs	Nm
	Ft/min	m/min		Hp	kW	Volts	FLA		
74M080HHS423FN	22	6.7	22	0.5	0.37	230 / 460	1.6 / 0.8	356	40.2
74M060HHS423FN	29	8.8	29	0.5	0.37	230 / 460	1.6 / 0.8	442	49.9
74M040HHS423FN	44	13.4	44	0.5	0.37	230 / 460	1.6 / 0.8	486	54.9
74M030HHS423FN	58	17.7	58	1.0	0.74	208-230 / 460	3.2-3.0 / 1.5	487	55.0
74M020HHS423FN	87	26.5	87	1.0	0.74	208-230 / 460	3.2-3.0 / 1.5	407	46.0
74M015HHS423FN	117	35.7	117	1.0	0.74	208-230 / 460	3.2-3.0 / 1.5	470	53.1
74M010HHS423FN	175	53.3	175	1.5	1.11	208-230 / 460	5.8-5.4 / 2.7	442	49.9
74M007HHS423FN	233	71.0	233	1.5	1.11	208-230 / 460	5.8-5.4 / 2.7	360	40.7

FLA = Full Load Amperes

Some motors and gear reducers may normally operate hot to the touch. Consult factory for specific operating temperatures. Note: Dimensions = in (mm)

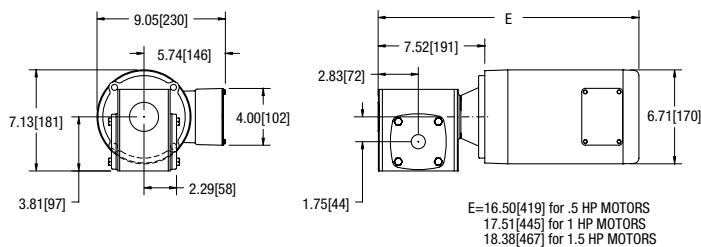
HIGHLIGHT

Highlighted gearmotors are not available with Nose Bar Idler tail.
Maximum Nose Bar speed is 117 ft/min (35.7 m/min)

STANDARD LOAD, VARIABLE SPEED

Chart 3 Painted Gearmotor

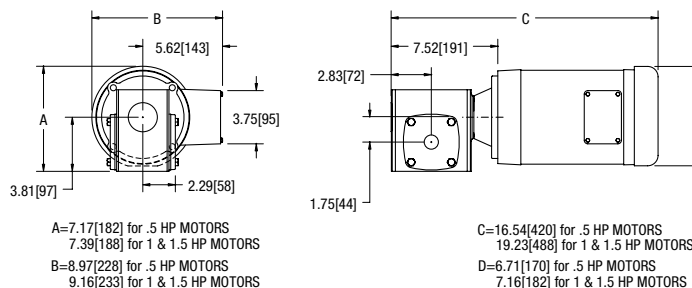
- Variable Frequency Drive, 6 to 60 Hz
- 3 Phase
- Nema 56C
- IP 55 Protection Rating
- Sealed Reducer with FDA H1 Lubricant
- FDA Approved Stainless Painted Gear Box
- FDA Approved White Epoxy Painted Motor
- UL and CSA Approved
- Totally Enclosed Non-Ventilated
- Order control separately, see page 145



Part Number	Belt Speed		RPM	3 Phase				in-lbs	Nm
	Ft/min	m/min		Hp	kW	Volts	FLA		
74M080HS423EN	2 to 22	0.6 to 6.7	22	0.5	0.37	230 / 460	1.6 / 0.8	356	40.2
74M060HS423EN	3 to 29	0.9 to 8.8	29	0.5	0.37	230 / 460	1.6 / 0.8	442	49.9
74M040HS423EN	5 to 44	1.3 to 13.4	44	0.5	0.37	230 / 460	1.6 / 0.8	486	54.9
74M030HS423EN	6 to 58	2.0 to 17.7	58	1	0.74	208-230 / 460	3.5-3.2 / 1.6	487	55.0
74M020HS423EN	9 to 87	2.6 to 26.5	87	1	0.74	208-230 / 460	3.5-3.2 / 1.6	487	55.0
74M015HS423EN	12 to 117	3.6 to 35.7	117	1	0.74	208-230 / 460	3.5-3.2 / 1.6	470	53.1
74M010HS423EN	18 to 175	5.3 to 53.3	175	1.5	1.11	208-230 / 460	4.6-4.2 / 2.1	442	49.9
74M007HS423EN	23 to 233	7.1 to 71.0	233	1.5	1.11	208-230 / 460	4.6-4.2 / 2.1	360	40.7

Chart 4 Stainless Steel Gearmotor

- Variable Frequency Drive, 6 to 60 Hz
- 3 Phase
- Nema 56C
- IP 55 Protection Rating
- Sealed Reducer with FDA H1 Lubricant
- Stainless Steel Gear Box
- Stainless Steel Motor
- UL and CSA Approved
- 1/2 HP is Totally Enclosed Non-Ventilated
- 1 and 1 1/2 HP are Totally Enclosed Fan Cooled
- Order control separately, see page 145



Part Number	Belt Speed		RPM	3 Phase				in-lbs	Nm
	Ft/min	m/min		Hp	kW	Volts	FLA		
74M080HVS423EN	2 to 22	0.6 to 6.7	22	0.5	0.37	230 / 460	1.6 / 0.8	356	40.2
74M060HVS423EN	3 to 29	0.9 to 8.8	29	0.5	0.37	230 / 460	1.6 / 0.8	442	49.9
74M040HVS423EN	5 to 44	1.3 to 13.4	44	0.5	0.37	230 / 460	1.6 / 0.8	486	54.9
74M030HVS423EN	6 to 58	2.0 to 17.7	58	1	0.74	208-230 / 460	3.2-3.0 / 1.5	487	55.0
74M020HVS423EN	9 to 87	2.6 to 26.5	87	1	0.74	208-230 / 460	3.2-3.0 / 1.5	487	55.0
74M015HVS423EN	12 to 117	3.6 to 35.7	117	1	0.74	208-230 / 460	3.2-3.0 / 1.5	470	53.1
74M010HVS423EN	18 to 175	5.3 to 53.3	175	1.5	1.11	208-230 / 460	5.3-5.4 / 2.7	442	49.9
74M007HVS423EN	23 to 233	7.1 to 71.0	233	1.5	1.11	208-230 / 460	5.3-5.4 / 2.7	360	40.7

FLA = Full Load Amperes

Some motors and gear reducers may normally operate hot to the touch. Consult factory for specific operating temperatures. Note: Dimensions = in (mm)

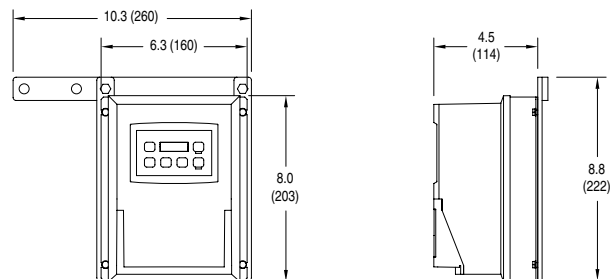
HIGHLIGHT

Highlighted gearmotors are not available with Nose Bar Idler tail.
Maximum Nose Bar speed is 117 ft/min (35.7 m/min)

VARIABLE SPEED CONTROLLER

Chart A Variable Speed Controllers

- Variable Frequency Drive
- Nema 4X Enclosure
- Stainless steel enclosure and mounting hardware
- Digital Display
- Keypad with Start/Stop and Speed variation
- Includes cord to motor
- Power to controller by others
- UL Approved

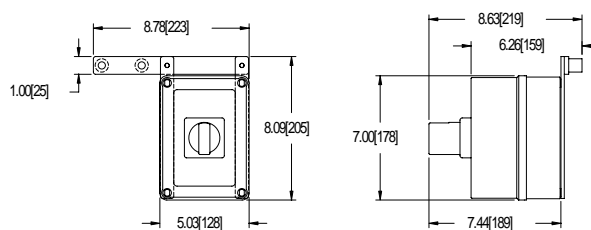


Part Number	Input			Output		Max Hp	Max Amps	A (width)	B (depth)
	Volts	Phase	Hz	Volts	Phase				
74MV1122S	115	1	60	230	3	0.5	2.2	7.9 (200)	3.8 (96)
74MV2322S	230	3	60	230	3	0.5	2.2	6.1 (155)	4.4 (112)
74MV1121S	115	1	60	230	3	1.0	4.0	7.9 (200)	4.9 (124)
74MV2121S	230	1	60	230	3	1.0	4.0	7.9 (200)	4.9 (124)
74MV4341S	460	3	60	460	3	1.0	2.0	6.1 (155)	4.4 (112)
74MV2127S	230	1	60	230	3	2.0	6.8	7.9 (200)	4.9 (124)
74MV2327S	230	3	60	230	3	2.0	6.8	7.9 (200)	4.9 (124)
74MV4347S	460	3	60	460	3	2.0	3.4	7.9 (200)	4.9 (124)

MANUAL MOTOR STARTER

Chart B Manual Motor Starter

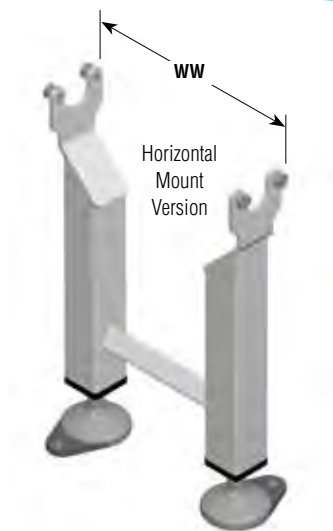
- Nema 4X Plastic Enclosure
- Stainless Steel mounting hardware
- IP 66
- Start / Stop Switch
- Lock out tag out capable
- Includes wiring to Motor
- Power to Starter by others
- No plug/cord set included



Part Number	Input			FLA
	Volts	Phase	Hz	
74MM11F	115	1	60	6.3 - 10
74MM21D	208-230	1	60	2.5 - 3.9
74MM23A	208-230	3	60	0.63 - 0.99
74MM23B	208-230	3	60	1.0 - 1.59
74MM23C	208-230	3	60	1.6 - 2.4
74MM23D	208-230	3	60	2.5 - 3.9
74MM23E	208-230	3	60	4.0 - 6.3
74MM43A	460	3	60	1.6 - 2.4
74MM43B	460	3	60	2.5 - 3.9
74MM43C	460	3	60	0.63 - 0.99
74MM43D	460	3	60	1.0 - 1.59

FLA = Full Load Amperes

AquaPruf® 7400 SERIES: SUPPORT STANDS



Horizontal Mount



Incline Mount



Bracket Mount

Straight Conveyor Support Stands

- Horizontal Mount Version for direct conveyor mounting, conveyor must be level (Mount directly to conveyor)
- Foot self-aligns 10° for sloped floors
- All components are stainless steel brushed to #4 finish
- Incline Mount Version for angled conveyor applications
- Sanitary Support Stands do not require mounting brackets

Support Stand Quantity Charts

7400 Straight Conveyors

- See table below for Stand Requirements

7400 Straight Stand Conveyors	
Conveyor Length	Number of Supports
20" (0.5m) - 30" (0.8m)	1
31" (0.8m) - 132" (3.4m)	2
133" (3.4m) - 252" (6.4m)	3
253" (6.4m) - 372" (9.4m)	4
373" (9.5m) - 492" (12.5m)	5
493" (12.5m) - 612" (15.5m)	6
613" (15.6m) - 732" (18.6m)	7
733" (18.6m) - 852" (21.6m)	8
853" (21.7m) - 972" (24.7m)	9
973" (24.7m) - 999" (25.4m)	10

7400 Curved Conveyors

- Straight modules must have stands near ends and at frame section joints
- See table below for Curve Modules Stand Requirements

7400 Curve Modules Stand Requirements

		Belt Width															
		8"	10"	12"	14"	16"	18"	20"	22"	24"	26"	28"	30"	32"	34"	36"	
Degree of Curve	15	n/a	n/a	0	0	0	0	0	0	0	0	0	0	0	0	0	
	30	0	0	0	0	0	0	0	0	0	0	0	0	0	0	0	
	45	n/a	n/a	0	0	0	0	0	0	0	0	0	0	0	0	0	
	60	0	0	0	0	0	0	0	0	0	1	1	1	1	1	1	
	75	n/a	n/a	1	1	1	1	1	1	1	1	1	1	1	1	1	
	90	0	0	1	1	1	1	1	1	1	1	1	1	1	1	1	
	105	n/a	n/a	1	1	1	1	1	1	1	2	2	2	2	2	2	
	120	1	1	1	1	1	1	1	1	1	2	2	2	2	2	2	
	135	n/a	n/a	2	2	2	2	2	2	2	2	2	2	2	2	2	
	150	1	1	3	3	3	3	3	3	3	3	3	3	3	3	3	
165	n/a	n/a	3	3	3	3	3	3	3	3	3	3	3	3	3		
180	1	1	3	3	3	3	3	3	3	3	3	3	3	3	3		

Straight Conveyor Fixed Foot Model

Conveyor Width		6" (152)	8" (203)	10" (254)	12" (305)	14" (356)	2" (51) increments up to...	60" (1,524)
WW Part # Reference		06	08	10	12	14	02 increments up to...	60
HM	Stand Width	15.85" (403)	17.85" (453)	19.85" (504)	21.85" (555)	23.4" (594)	2" (51) increments up to...	69.4" (1,762)
	Top of Belt Height	19-23" (483-584) 1" (25) increments up to... 70-74" (1,778-1,880)						
	HH Part # Reference	1923 0101 increments up to... 7074						
AM	Stand Width	17.81" (452)	19.81" (503)	21.81" (554)	23.81" (605)	25.8" (655)	2" (51) increments up to...	71.8" (1,823)
	Top of Belt Height	19-23" (483-584) 1" (25) increments up to... 70-74" (1,778-1,880)						
	HH Part # Reference	1923 0101 increments up to... 7074						
BM	Stand Width	10.25" (260)	12.25" (311)	14.25" (362)	16.25" (413)	18.25" (464)	2" (51) increments up to...	64.25" (1,632)
	Top of Belt Height	13-17" (330-432) or 16-20" (406-508)						
	HH Part # Reference	1317 or 1620						

Straight Conveyor Swivel Locking Caster Model*

Conveyor Width		6" (152)	8" (203)	10" (254)	12" (305)	14" (356)	2" (51) increments up to...	60" (1,524)
WW Part # Reference		06	08	10	12	14	02 increments up to...	60
HM	Stand Width	15.85" (403)	17.85" (453)	19.85" (504)	21.85" (555)	23.4" (594)	2" (51) increments up to...	69.4" (1,762)
	Top of Belt Height	24-28" (610-711) 1" (25) increments up to... 70-74" (1,778-1,880)						
	HH Part # Reference	2428 0101 increments up to... 7074						
AM	Stand Width	17.81" (452)	19.81" (503)	21.81" (554)	23.81" (605)	25.8" (655)	2" (51) increments up to...	71.8" (1,823)
	Top of Belt Height	24-28" (610-711) 1" (25) increments up to... 70-74" (1,778-1,880)						
	HH Part # Reference	2428 0101 increments up to... 7074						
BM	Stand Width	10.25" (260)	12.25" (311)	14.25" (362)	16.25" (413)	18.25" (464)	2" (51) increments up to...	64.25" (1,632)
	Top of Belt Height	18-22" (457-559) or 21-25" (553-635)						
	HH Part # Reference	1822 or 2125						

Note: HH is to Conveyor Top of Belt. * Some caster model support stands are equipped with integrated outriggers. Contact factory for details.

Due to the wide variety of drive set ups and applications, point of installation guarding is the responsibility of the end user.

For ordering information, see page 153

TALL SUPPORT STANDS

Fixed Foot Model

Conveyor Width	4" (102)	6" (152)	8" (203)	in 2" (51mm) increments up to...	60" (1,524)
WW Part # Reference	04	06	08	in 02 increments up to...	60
Stand Width at Foot *	(0.263)(HH max) + (WW + 6) inches				
Top of Belt (Minimum)	71" (1,803)	72" (1,829)	73" (1,854)	in 1" (25mm) increments up to...	95" (2,413)
Top of Belt (Maximum)	75" (1,905)	76" (1,930)	77" (1,956)	in 1" (25mm) increments up to...	99" (2,515)
HHHH Part Number	7175	7276	7377	in 01 increments up to...	9599



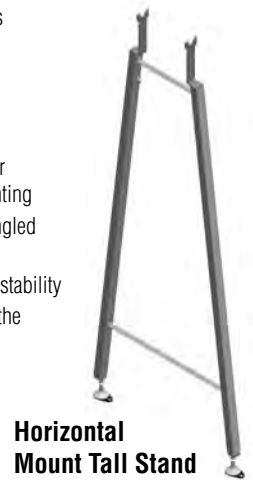
Horizontal Mount



Adjustable Mount

- All components are stainless steel brushed to #4 finish
- Has +/- 2" of adjustment
- Fixed Foot self aligns 10° for sloped floors
- Horizontal Mount Version for Direct Level Conveyor Mounting
- Incline Mount Version for angled conveyor applications
- Includes Diagonal Brace for stability
- Tall Support Stands require the use of floor anchors

* Width dimension is nominal dimension for space claim purposes only. For detail dimension, contact factory.



Horizontal Mount Tall Stand

LOW HEIGHT SUPPORT STANDS

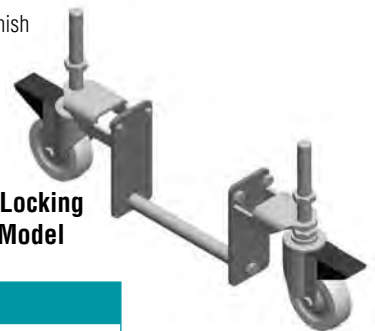
Fixed Foot Model

Top of Belt (Minimum)	7" (178)	9" (229)
Top of Belt (Maximum)	11" (279)	13" (330)
HHHH Part # Reference	0711	0913
Stand Width at Foot *	WW + 10.5" (267mm)	

- All components are stainless steel brushed to #4 finish
- Has +/- 2" of adjustment
- Fixed Foot self aligns 10° for sloped floors
- Caster is swivel locking
- Horizontal conveyor mounts only

* Width dimension is nominal dimension for space claim purposes only. For detail dimension, contact factory.

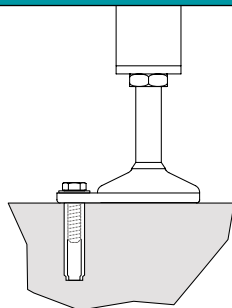
Swivel Locking Caster Model



Swivel Locking Caster Model

Conveyor Width	4" (102)	6" (152)	8" (203)	in 2" (51mm) increments up to...	60" (1,524)
WW Part # Reference	04	06	08	in 02 increments up to...	60
Stand Width at Caster *	22" (559)	24" (610)	26" (660)	in 2" (51mm) increments up to...	78" (1,981)
Top of Belt (Minimum)	12" (305)		14" (356)		16" (406)
Top of Belt (Maximum)	16" (406)		18" (457)		20" (508)
HHHH Part Number	1216		1418		1620

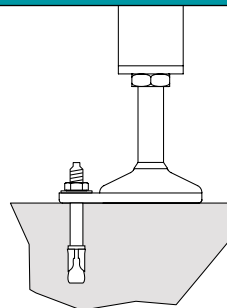
SANITARY FLOOR ANCHOR KITS



Type 1 Sanitary Floor Anchor Kit

- 3/8" (10 mm) x 1.57" (40 mm) drop in
- Stainless Steel
- Anchor is flush with floor upon removal of bolt
- Two (2) per anchor kit

Part No. FAS-1



Type 2 Sanitary Floor Anchor Kit

- 3/8" (10 mm) x 2 3/4" (70 mm)
- Stainless Steel
- Threaded anchor bolt protrudes above floor after installation
- Two (2) per anchor kit

Part No. FAS-2

Note: Dimensions = in (mm)

For ordering information, see page 153

HORIZONTAL CEILING SUPPORTS



- All components are stainless steel brushed to #4 finish
- Includes a pair of mounting brackets and hardware for support on both sides of conveyor
- Compatible with 1/2" threaded support rod provided by others

Part No. 39HCS

ADJUSTABLE ANGLE CEILING SUPPORTS



- All components are stainless steel brushed to #4 finish
- Includes a pair of mounting brackets and hardware for support on both sides of conveyor
- Compatible with 1/2" threaded support rod provided by others
- Mounting block pivots to support incline mounts from 0° to 60°

Part No. 39ACS

Due to the wide variety of drive set ups and applications, point of installation guarding is the responsibility of the end user.

7400 SERIES: MODULAR FLAT BELT

7 4 M WW - LLL S S C D G BB MP

Motorized Pulley (Optional Parameter)

MA = Motorized Pulley in the A Position

MD = Motorized Pulley in the D Position

Belt Material

Profile: 1 = Lowside, 2 = 1" Highside, 3 = Guided

Drive / Pulley Type:

1 = Side drive, standard pulleys each end, position A or D

2 = Side drive, nose bar idler end, position A or D

3 = Nose bar drive, nose bars each end, position A**

4 = Nose bar drive, nose bars each end, position D**

5 = Nose bar drive, standard pulley idler end, position A**

6 = Nose bar drive, standard pulley idler end, position D**

Cleaning Options:

0 = None

1 = Frame Cutouts only

2 = Tip up Idler Pulley only

3 = Belt lifters & Tip up idler only***

4 = Frame cutouts & Tip up idler pulley

5 = All 3 Cleaning Features***

Idler / Infeed Stand Location: *

A = no stand mounting holes

B = 12" from idler end

C = 18" from idler end

D = 24" from idler end

E = 30" from idler end

F = 36" from idler end

G = 12" from idler end with braces

H = 18" from idler end with braces

J = 24" from idler end with braces

K = 30" from idler end with braces

M = 36" from idler end with braces

Drive / Discharge Stand Location: *

A = no stand mounting holes

B = 12" from drive end

C = 18" from drive end

D = 24" from drive end

E = 30" from drive end

F = 36" from drive end

G = 12" from drive end with braces

H = 18" from drive end with braces

J = 24" from drive end with braces

K = 30" from drive end with braces

M = 36" from drive end with braces

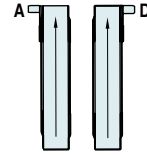
Length: 036-999

Belt Width: Standard = 06-60, Ultimate = 06-36

Language: M = English, U = CE English

Clean Type: 4 = Standard

Drive Shaft Position



Example: 74M24120BC511MR

Description: 7400 series straight flat belt conveyor, 24" wide x 10' long, stand mounting holes 12" from drive end, stand mounting holes 18" from idler end, belt lifters, tip up end pulley, frame cut-outs, standard pulleys each end side drive ready, lowside profile and MR belt material.

Conveyor sections longer than 11' (3,353 mm) are constructed using a multiple piece frame. It is recommended that each frame joint be supported by a support stand or other means. If support stand location is a concern, please consult factory for support locations.

*Stand location may be dependent upon conveyor length

**Nose bar drive conveyors have a minimum conveyor length of 48"

***Belt lifters have a minimum conveyor length of 48"

These reference charts are only provided as a reference and is not intended to be used for the construction of complete part numbers for order placing. Dorner has a full network of trained Distributors and sales staff equipped with our configuring / pricing software who are able to provide complete and accurate quotes for all standard products in a matter of minutes.

For more information about any product or accessory, or to locate a local distributor, go to www.dorner.com.