

- > **Port size: 1/4" & 3/8"**  
(ISO G/PTF)
- > **Excelon® Plus**  
design allows in-line  
installation or modular  
installation with other  
Excelon® Plus products
- > **5 or 40 micron particle**  
and high efficiency  
water removal (> 95%)
- > **Double safety lock bowl**
- > **Metal bowl with prismatic**  
liquid level indicator lens
- > **Light weight polycarbonate**  
bowl
- > **Air purity classes in**  
accordance to ISO8573-1:  
particles class 6 & 7  
and liquid water class 8



## Technical features

### Medium:

Compressed air only

### Maximum supply pressure:

Polycarbonate bowl:

145 psi (10 bar)

Metal bowl: 246 psi (17 bar)

### Filter element:

5 µm & 40 µm

### Port size:

G1/4, G3/8, 1/4 PTF, 3/8 PTF

### Drain:

Manual or automatic

### Flow:

48 scfm (23 dm³/s) at port size 1/4",  
58 scfm (27 dm³/s) at port size 3/8",  
operating pressure 91 psi (6.3 bar)  
and a Δp: 7.25 psi (0.5 bar) drop  
from set. Filter element: 40 µm

### Automatic drain operating conditions (float operated):

Bowl pressure required to  
close drain: > 5 psi (0.35 bar)  
Bowl pressure required to open  
drain: ≤ 2.9 psi (0.2 bar) Minimum  
air flow required to close drain:  
2 scfm (1 dm³/s)

### Ambient/Media temperature:

Polycarbonate bowl:

14 to +140°F (-10 to +60°C)

Metal bowl:

-4 to +149°F (-20 to +65°C)

Air supply must be dry enough  
to avoid ice formation at  
temperatures below +35°F (+2°C).

### Materials:

Body: Die cast aluminium

Body covers: ABS

Bowl: Transparent PC with

PP guard or die cast zinc

Liquid level indicator



lens (metal bowl): PA

Filter element: sintered PP

Bowl 'o'- ring: Chloroprene

Elastomers: NBR

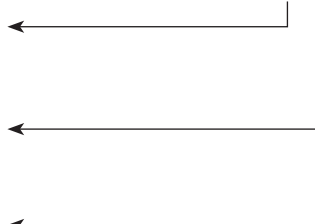
## Technical data F82G – standard models

Symbol	Port Size (PTF)	Drain	Filter element (µm)	Bowl	Weight lb (kg)	Model
	1/4	Auto	40	Guarded polycarbonate	0.48 (0.22)	F82G-2AN-AP3
	3/8	Auto	40	Guarded polycarbonate	0.48 (0.22)	F82G-3AN-AP3
	1/4	Auto	40	Metal with level indicator	0.90 (0.41)	F82G-2AN-AD3
	3/8	Auto	40	Metal with level indicator	0.90 (0.41)	F82G-3AN-AD3
	1/4	Manual	40	Guarded polycarbonate	0.44 (0.20)	F82G-2AN-QP3
	3/8	Manual	40	Guarded polycarbonate	0.44 (0.20)	F82G-3AN-QP3
	1/4	Manual	40	Metal with level indicator	0.88 (0.40)	F82G-2AN-QD3
	3/8	Manual	40	Metal with level indicator	0.88 (0.40)	F82G-3AN-QD3

## Option selector

### F82G-★ ★ N - ★ ★ ★

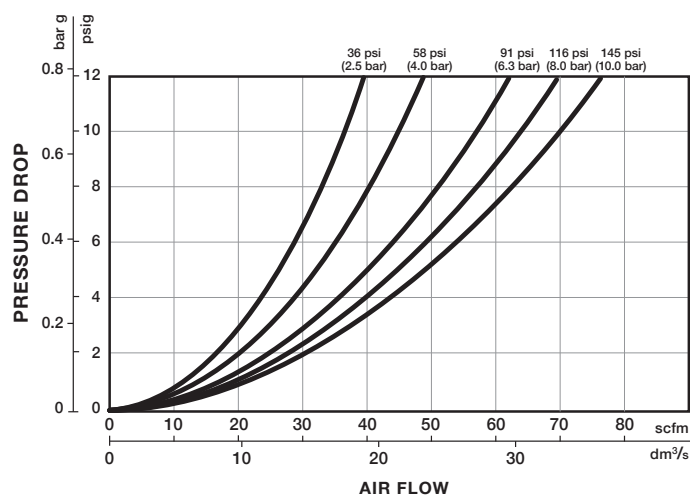
Port size	Substitute
1/4"	<b>2</b>
3/8"	<b>3</b>
Thread form	Substitute
PTF	<b>A</b>
ISO G	<b>G</b>
Drain	Substitute
Manual	<b>Q</b>
Auto drain	<b>A</b>



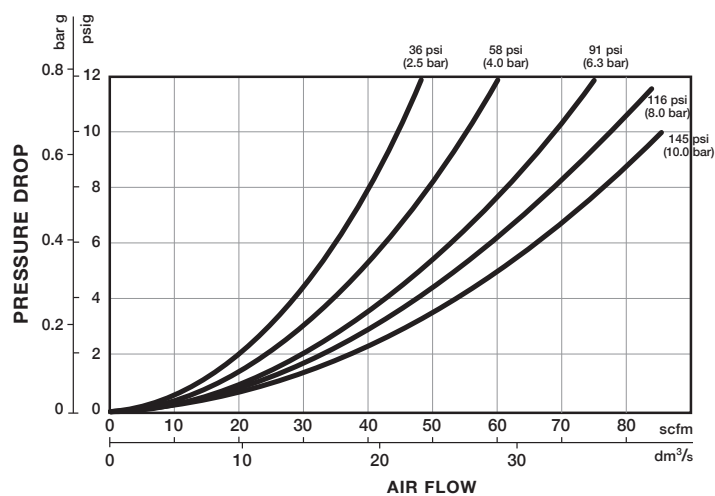
Element	Substitute
5 µm	<b>1</b>
40 µm	<b>3</b>
Bowl	Substitute
Transparent with guard	<b>P</b>
Metal with liquid indicator	<b>D</b>

## Flow characteristics

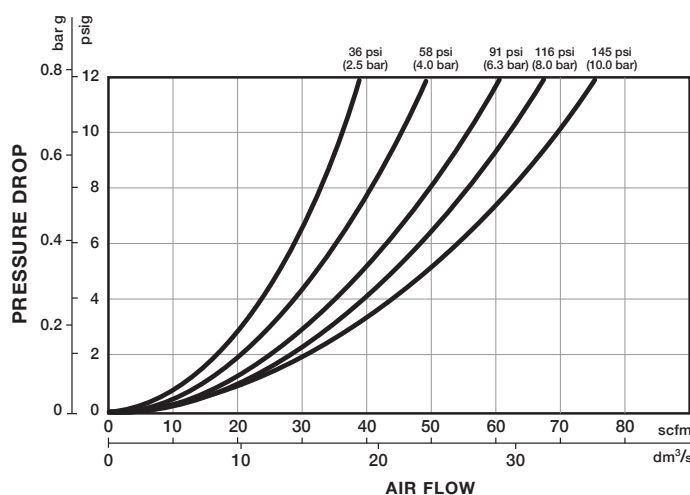
Port size: 1/4", 5 µm



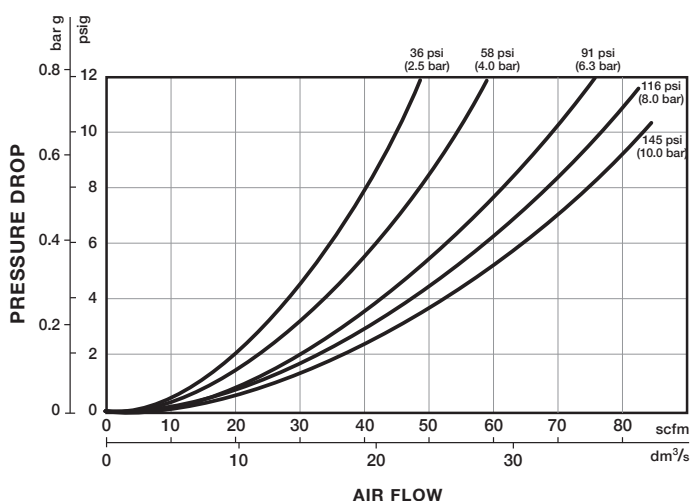
Port size: 3/8", 5 µm



Port size: 1/4", 40 µm



Port size: 3/8", 40 µm



## Accessories

**Wall mounting bracket**


page 5

820024-50KIT

**Quikclamp®**


page 5

820014-51KIT

**Quikclamp®  
with bracket assembled**


page 5

820014-52KIT

**Pressure sensing block  
1/4 PTF**


page 5

820016-50KIT

**Pressure sensing block  
G1/4**


page 5

820016-51KIT

**Full flow porting block  
3/8 PTF**


page 5

820028-50KIT

**Full flow porting block  
G3/8**


page 5

820028-53KIT

**Pressure switch interface  
block (18D pressure switch)**


page 6

0523109000000000

**Pneumatic pressure switch  
18D (0,5 ... 8 bar) \*1)**

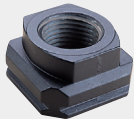

page 6

0881300000000000

**Digital pressure switch  
51D(-1 ... 10 bar) \*2)**

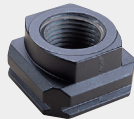

page 7

0860810000000000

**Port Adaptors  
1/4 PTF**


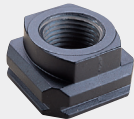
page 6

820015-02KIT

**Port Adaptors  
3/8 PTF**


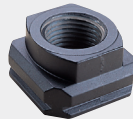
page 6

820015-03KIT

**Port Adaptors  
G1/4**


page 6

820015-08KIT

**Port Adaptors  
G3/8**


page 6

820015-09KIT

## Maintenance/Service

**Filter cartridge**  
5 micron



820038-50KIT

**Filter cartridge**  
40 micron



820038-51KIT

**Auto drain kit with**  
metal Nut - PTF



6000-61KIT

**Auto drain kit with**  
metal Nut - PTF



6000-60KIT

## Spare parts

**Filter Bowl**  
(Guarded Poly bowl with  
auto drain 6 mm PIF)



820025-51KIT

**Filter Bowl**  
(Guarded Poly bowl  
with manual drain)



820025-50KIT

**Filter Bowl**  
(Metal with S/Glass  
& auto drain, 6 mm PIF)



820003-51KIT

**Filter Bowl**  
(Metal with S/Glass  
& manual drain)



820003-50KIT

**Filter Bowl**  
(Guarded Poly bowl  
with auto drain, 1/4 PIF)



820025-53KIT

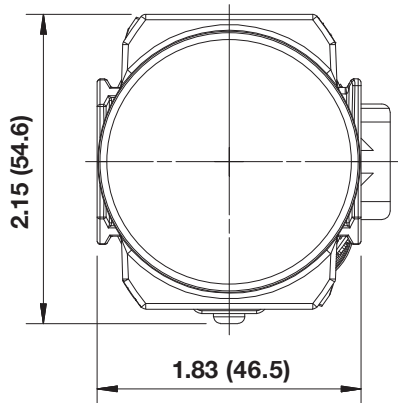
**Filter Bowl**  
(Metal with S/Glass  
& auto drain, 1/4 PIF)



820003-56KIT

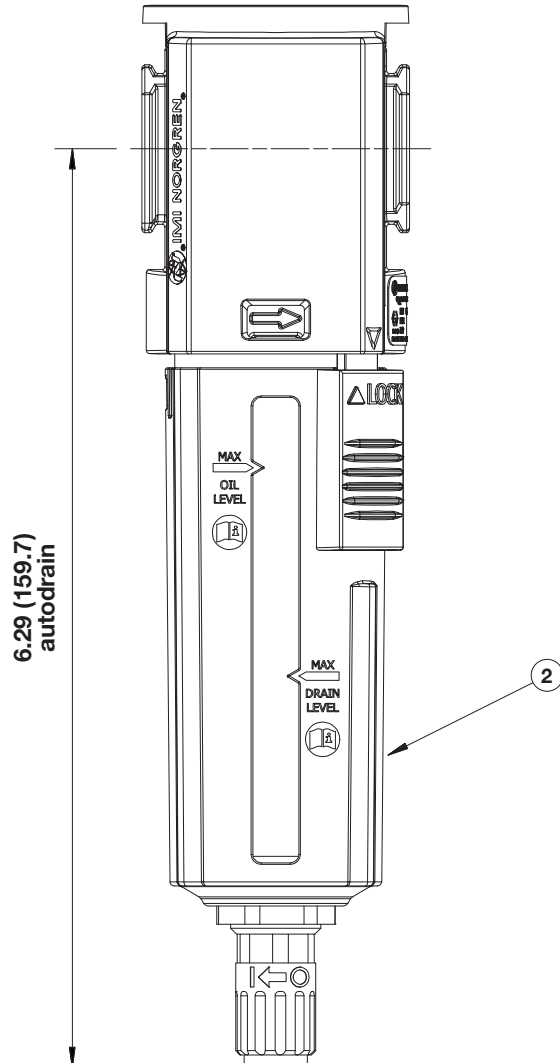
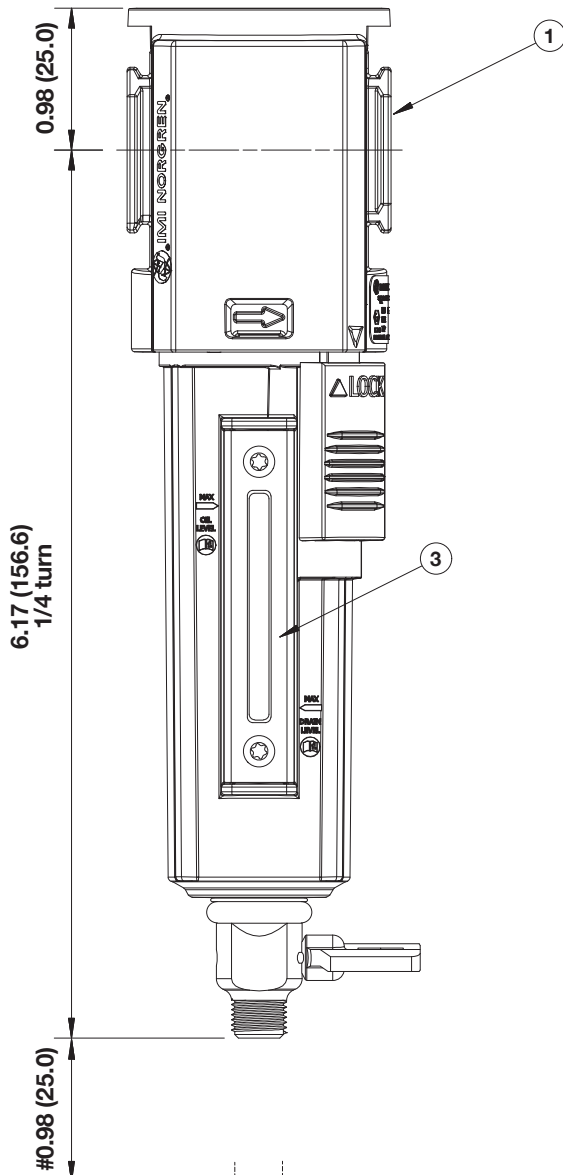
## Dimensions

Dimensions in inches (mm)  
 Projection/Third angle



# Minimum clearance for bowl removal

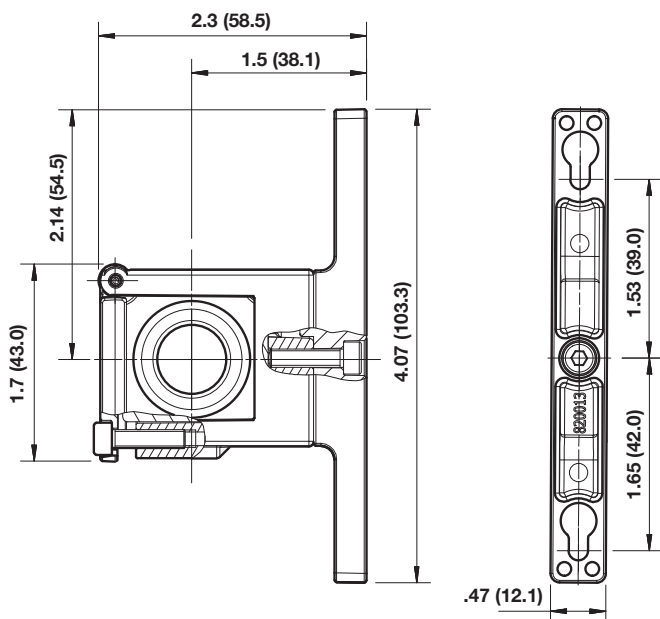
- 1 Main ports 1/4", 3/8" (ISO G/PTF)
- 2 Transparent bowl with guard
- 3 Metal bowl with liquid level indicator lens



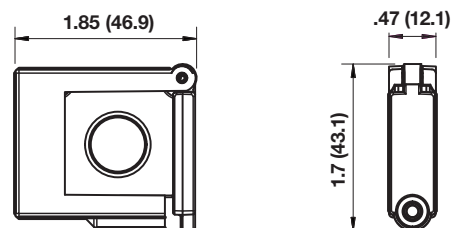
Dimensions in inches (mm)  
Projection/Third angle

## Accessories

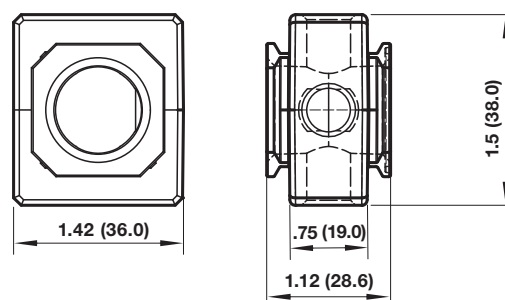
### Quikclamp® with wall bracket



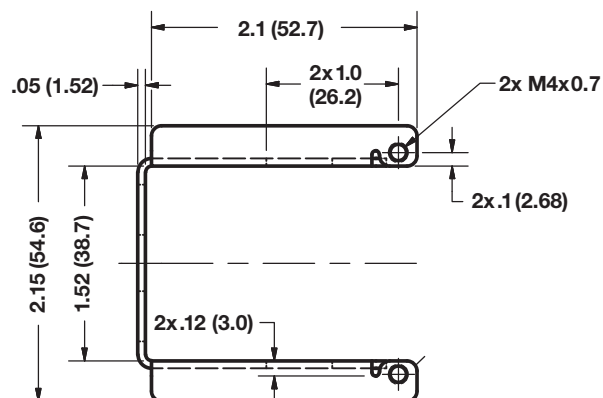
### Quikclamp®



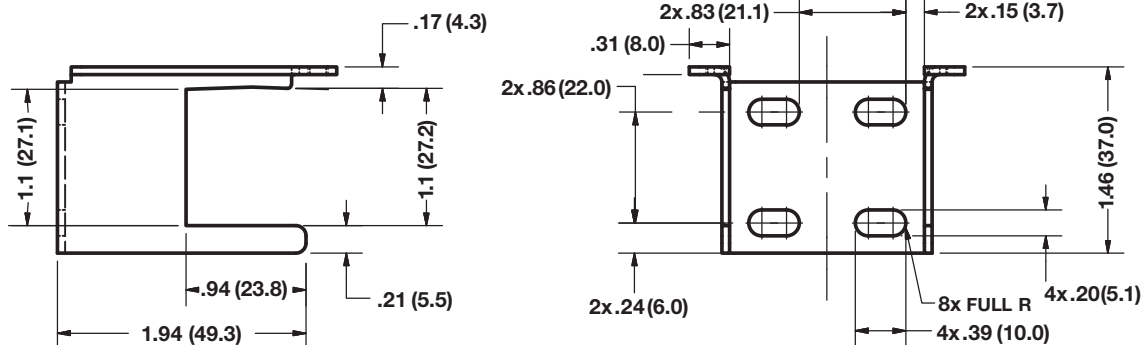
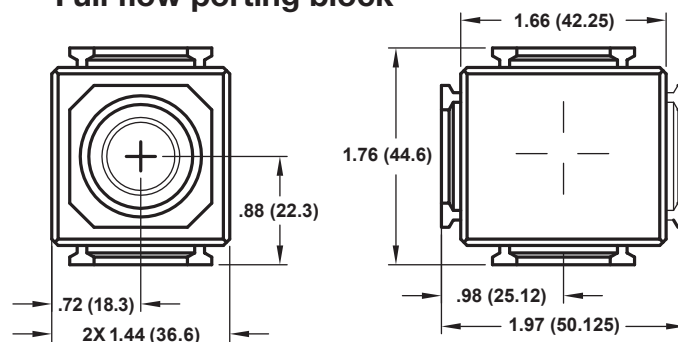
### Pressure sensing block



### Mounting bracket



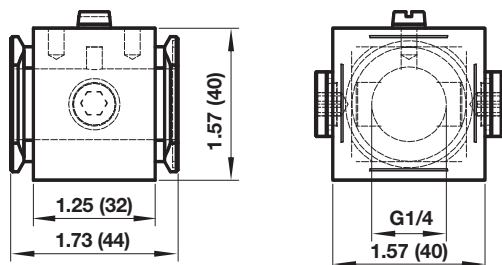
### Full flow porting block



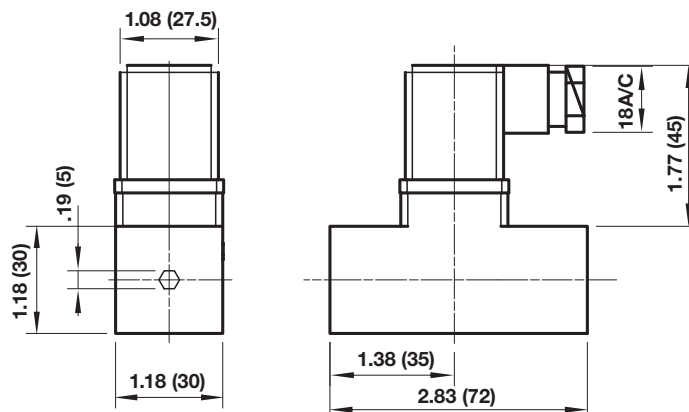
Dimensions in inches (mm)  
 Projection/Third angle



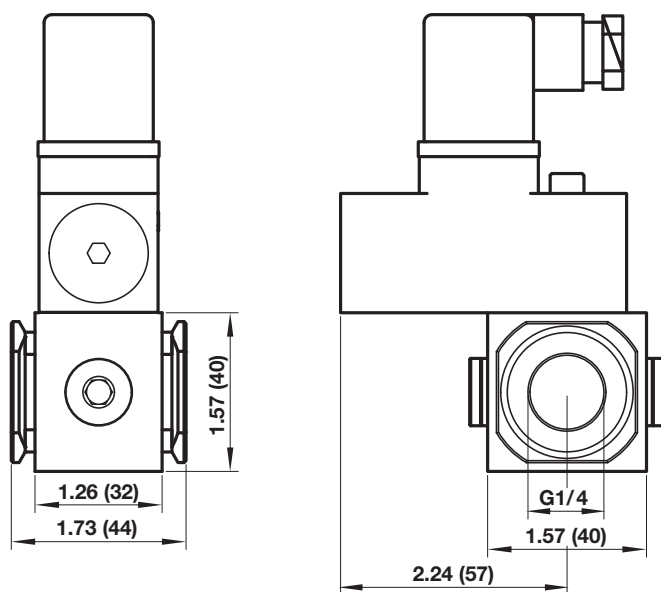
### Porting block for 18D pressure switch



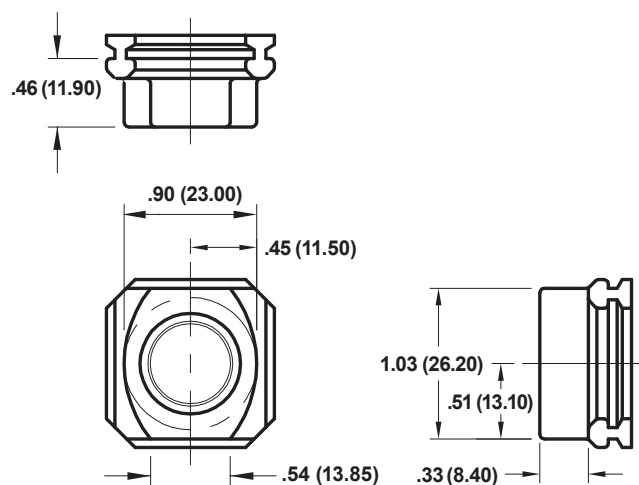
### 18D Pressure switch



### 18D Porting block and 18D assembled



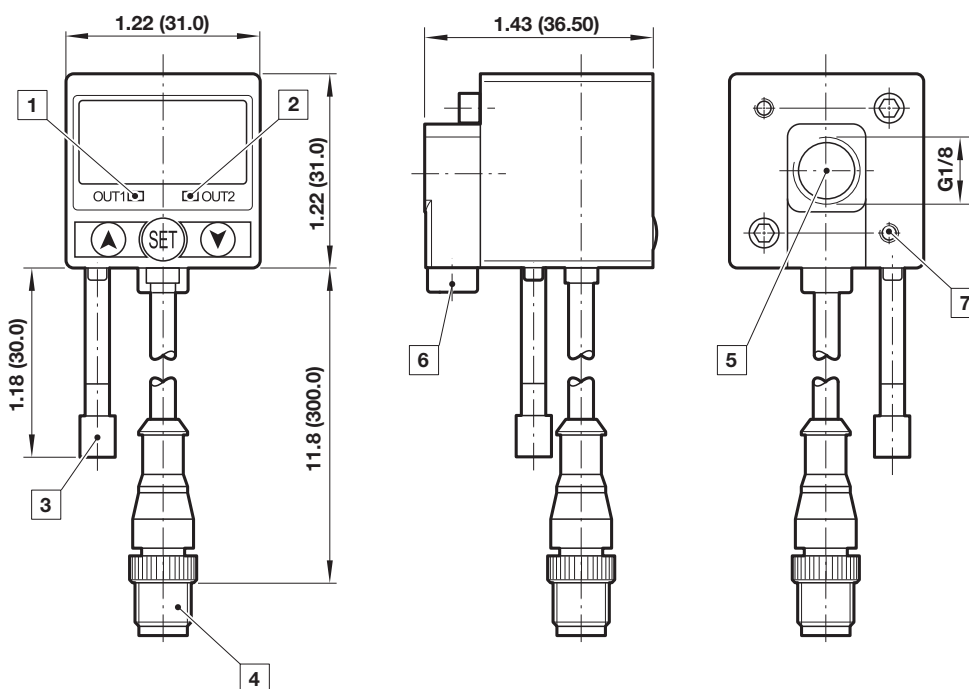
### Pipe adaptor



Dimensions in inches (mm)  
Projection/Third angle



## 51D Pressure switch - digital



- 1 Switch OUT 1, green LED
- 2 Switch OUT 2, red LED
- 3 Dustproof protector
- 4 Connector M12 x 1
- 5 Inlet port
- 6 Alternative inlet port G1/8 plugged
- 7 Thread for mounting screw

## Warning

These products are intended for use in industrial compressed air systems only. Do not use these products where pressures and temperatures can exceed those listed under »Technical features/data«. Before using these products with fluids other than those specified, for non-industrial applications, life-support systems or other applications not within published specifications, consult IMI Precision Engineering, Norgren Ltd.

Through misuse, age, or malfunction, components used in fluid power systems can fail in various modes. The system designer is warned to consider the failure modes of all component parts used in fluid power systems and to provide adequate safeguards to prevent personal injury or damage to equipment in the event of such failure. System designers must provide a warning to end users in the system instructional manual if protection against a failure mode cannot be adequately provided. System designers and end users are cautioned to review specific warnings found in instruction sheets packed and shipped with these products.