

- > **Port size: 3/8" to 3/4"**
(PTF/ISO G)
- > **Excelon® Plus design**
allows in-line
installation or modular
installation with other
Excelon® Plus products
- > **5 or 40 micron particle**
and high efficiency
water removal (> 98%)
- > **Double safety lock bowl**
- > **Metal bowl with**
prismatic liquid level
indicator lens
- > **Light weight**
polycarbonate bowl
with guard
- > **Air purity classes in**
accordance to
ISO8573-1: particles class
6 & 7 and liquid water
class 8



Technical features

Medium:

Compressed air only

Maximum supply pressure:

Polycarbonate bowl: 145 psi (10 bar)

Metal bowl: 290 psi (20 bar)

Filter element:

5 µm & 40 µm

Port size:

G3/8, G1/2, G3/4,

3/8 PTF, 1/2 PTF, 3/4 PTF

Flow:

165 scfm (78 dm³/s)

at port size: 1/2",
operating pressure 91 psi (6.3 bar)
and a Δp: 7.25 psi (0.5 bar) drop
from set.

Filter element: 40 µm

Drain:

Manual or automatic

Automatic drain operating conditions (float operated):

Bowl pressure required to close

drain: > 5 psi (0.35 bar)

Bowl pressure required to open

drain: ≤ 2.9 psi (0.2 bar)

Minimum air flow required to close

drain: 2 scfm (1 dm³/s)

Ambient/Media temperature:

Polycarbonate bowl:

14 to +140°F (-10 to +60°C)

Metal bowl:

-4 to +149°F (-20 to +65°C)

Air supply must be dry enough

to avoid ice formation at

temperatures below +35°F (+2°C).

Materials:

Body: Die cast aluminum

Body covers: ABS

Bowl: Transparent PC with PP guard
or die cast aluminum

Liquid level indicator lens


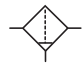
(metal bowl): PA

Filter element: sintered PP

Bowl 'o' - ring: Chloroprene

Elastomers: NBR

Technical data F84G - standard models

Symbol	Port size PTF	Drain	Filter element (µm)	Bowl	Weight lb (kg)	Model
	3/8	Auto	40	Guarded polycarbonate	0.8 (0.38)	F84G-3AN-AP3
	1/2	Auto	40	Guarded polycarbonate	0.8 (0.38)	F84G-4AN-AP3
	3/4	Auto	40	Guarded polycarbonate	0.8 (0.38)	F84G-6AN-AP3
	3/8	Auto	40	Metal with level indicator	1.1 (0.52)	F84G-3AN-AD3
	1/2	Auto	40	Metal with level indicator	1.1 (0.52)	F84G-4AN-AD3
	3/4	Auto	40	Metal with level indicator	1.1 (0.52)	F84G-6AN-AD3
	3/8	Manual	40	Guarded polycarbonate	0.8 (0.38)	F84G-3AN-QP3
	1/2	Manual	40	Guarded polycarbonate	0.8 (0.38)	F84G-4AN-QP3
	3/4	Manual	40	Guarded polycarbonate	0.8 (0.38)	F84G-6AN-QP3
	3/8	Manual	40	Metal with level indicator	1.1 (0.52)	F84G-3AN-QD3
	1/2	Manual	40	Metal with level indicator	1.1 (0.52)	F84G-4AN-QD3
	3/4	Manual	40	Metal with level indicator	1.1 (0.52)	F84G-6AN-QD3

Option selector

Port size	Substitute
3/8"	3
1/2"	4
3/4"	6
Thread form	Substitute
PTF	A
ISO G parallel	G
Drain	Substitute
Manual	Q
Auto drain	A

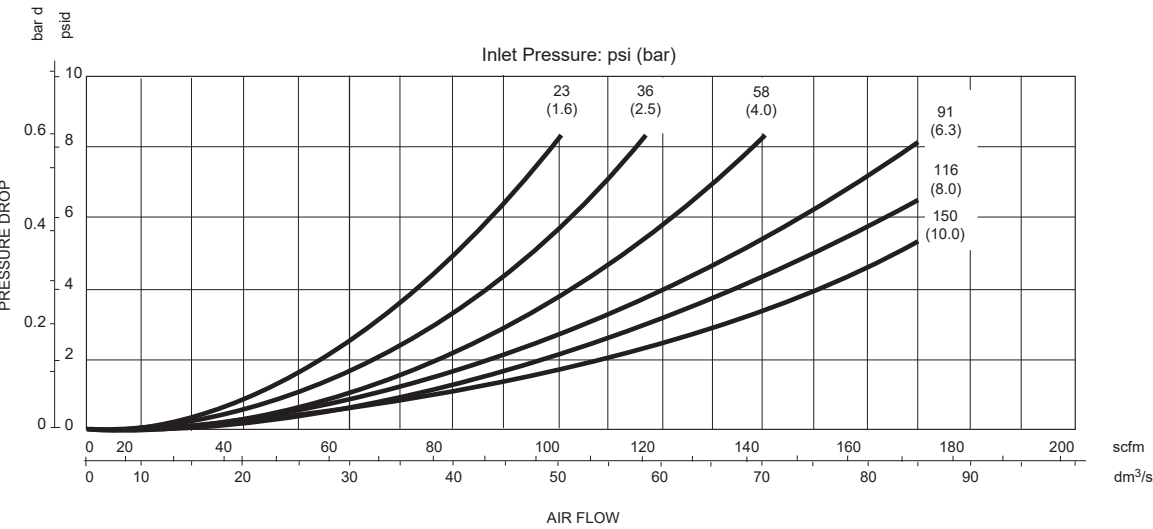
F84G-★★N-★★★

Element	Substitute
5 µm	1
40 µm	3
Bowl	Substitute
Transparent with guard (standard)	P
Metal with liquid indicator	D

Flow characteristics

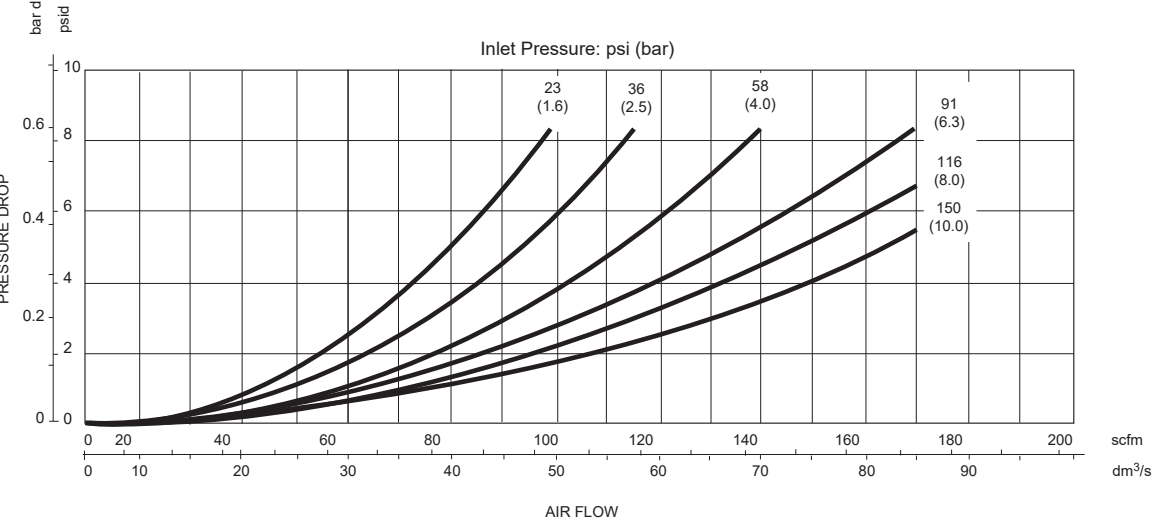
Element 40 µm

Port size: 1/2"



Element 5 µm

Port size: 1/2"



Accessories

Wall mounting bracket

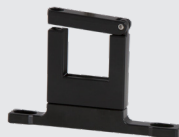
Page 6

840024-50KIT

Quikclamp®

Page 6

840014-51KIT

**Quikclamp®
with bracket assembled**

Page 6

840014-52KIT

**Pressure sensing block
1/4 PTF**

Page 6

840016-50KIT

**Pressure sensing block
G1/4**

Page 6

840016-51KIT

**Full flow porting block
3/4 PTF**

Page 6

840028-68KIT

**Full flow porting block
G3/4**

Page 6

840028-69KIT

**Full flow porting block
3/4 PTF**

Page 6

840028-50KIT

**Full flow porting block
G3/4**

Page 6

840028-53KIT

**Pressure switch interface
block (18D pressure switch)
G1/2**

Page 7

0337717000000000

**Pneumatic pressure switch
18D (7 to 120 psi)**

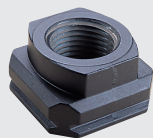
Page 7

0881300000000000

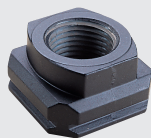
**Digital pressure switch
51D (-14.5 to 145 psi)**

Page 7

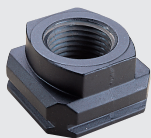
0860811000000000

**Port Adaptors
3/8 PTF**


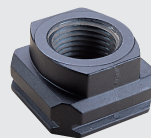
840015-02KIT

**Port Adaptors
1/2 PTF**

Page 7

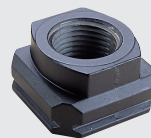
840015-03KIT

**Port Adaptors
3/4 PTF**

Page 7

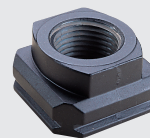
840015-04KIT

**Port Adaptors
G3/8**

Page 7

840015-10KIT





**Port Adaptors
G1/2**

Page 7

840015-11KIT





**Port Adaptors
G3/4**

Page 7



840015-12KIT

Maintenance/Service

Filter cartridge 5 micron	Filter cartridge 40 micron	Auto drain kit with metal Nut - Imperial	Auto drain kit with metal Nut - Metric
			
840038-50KIT	840038-51KIT	6000-61KIT	6000-60KIT

Spare parts

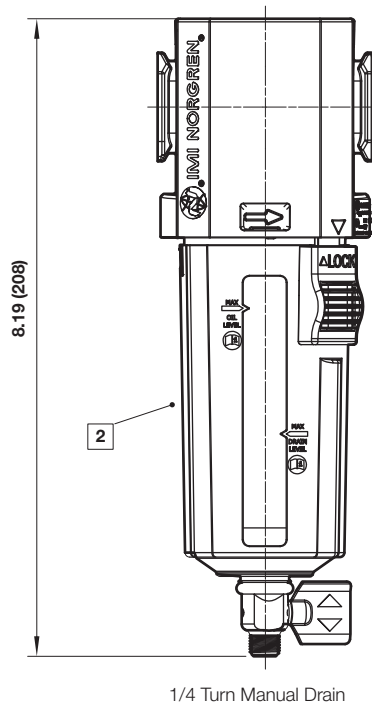
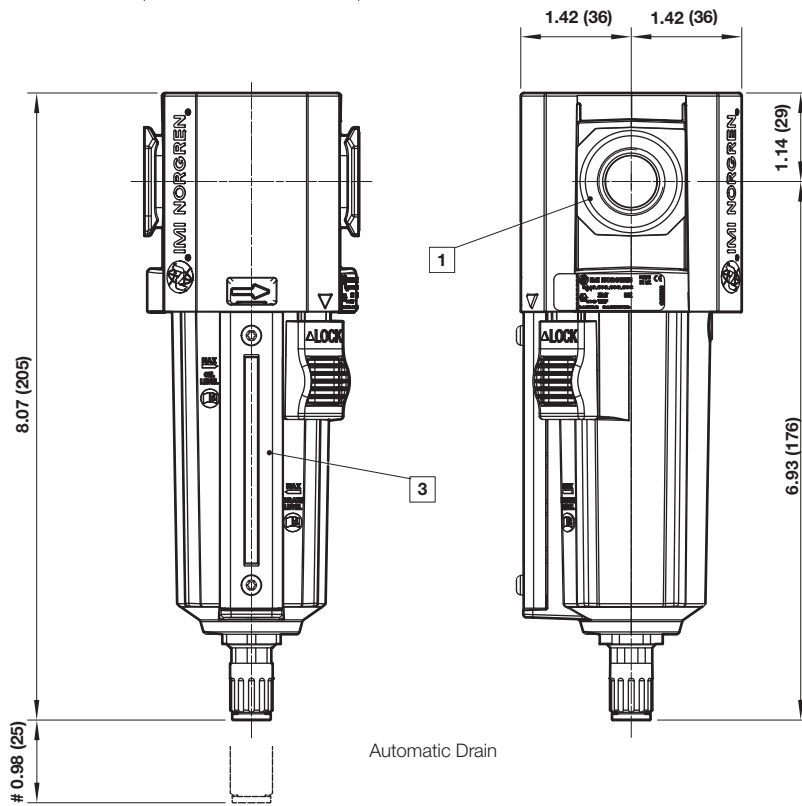
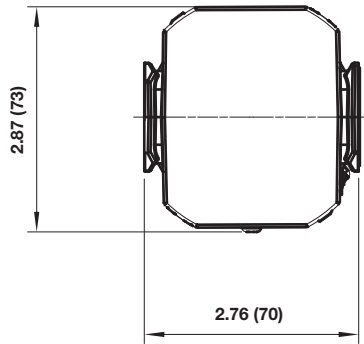
Filter Bowl (Guarded Poly bowl with auto drain 6 mm PIF)	Filter Bowl (Guarded Poly bowl with manual drain)	Filter Bowl (Metal with S/Glass & auto drain, 6 mm PIF)	Filter Bowl (Metal with S/Glass & manual drain)
			
840025-51KIT	840025-50KIT	840003-51KIT	840003-50KIT

Filter Bowl (Guarded Poly bowl with auto drain, 1/4 PIF)	Filter Bowl (Metal with S/Glass & auto drain, 1/4 PIF)
	
840025-53KIT	840003-56KIT



Dimensions

Dimensions in inches (mm)
Projection/Third angle



Minimum clearance for bowl removal

1 Main ports 3/8", 1/2" or 3/4"
(PTF/ISO G)

2 Transparent bowl with guard

3 Metal bowl with liquid level
indicator lens

Accessories

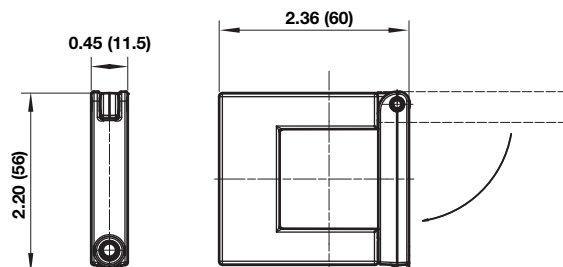
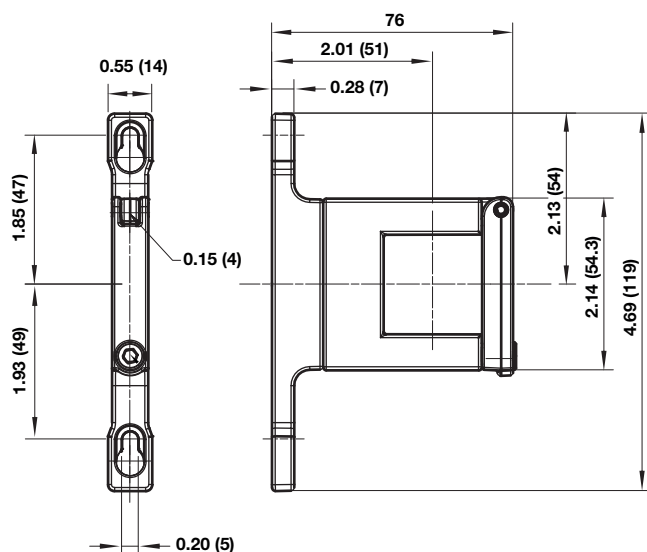
Dimensions in inches (mm)

Projection/Third angle

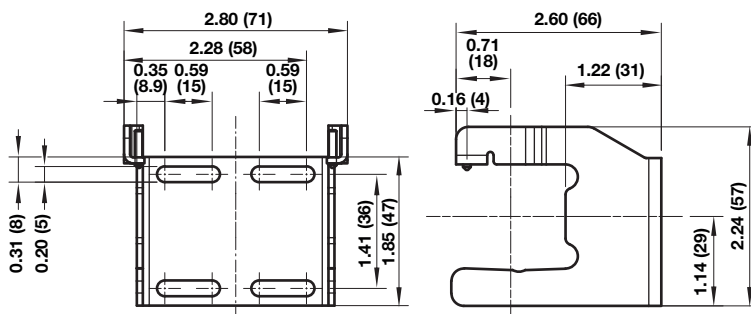


Quikclamp® with wall bracket

Quikclamp®

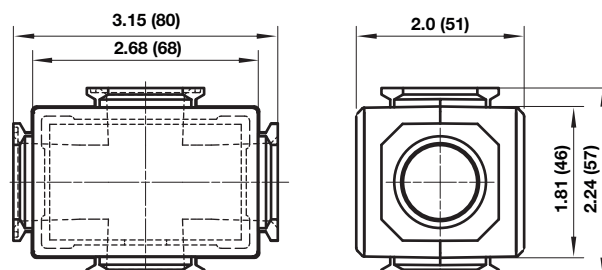
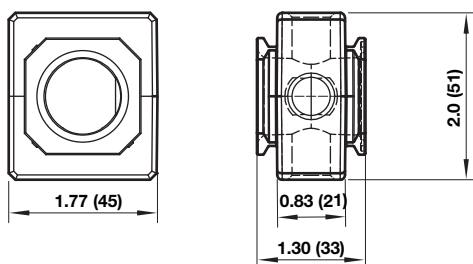


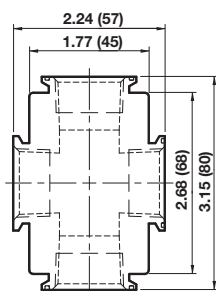
Mounting bracket



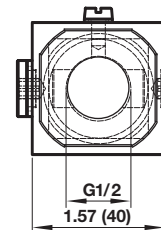
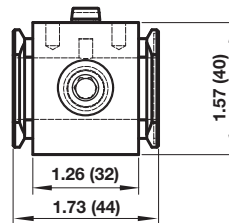
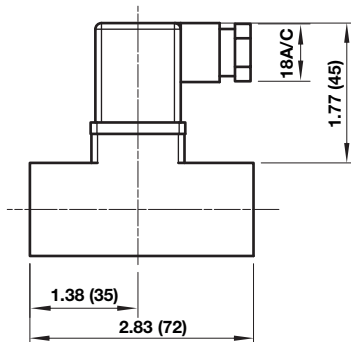
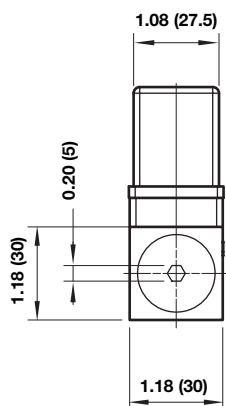
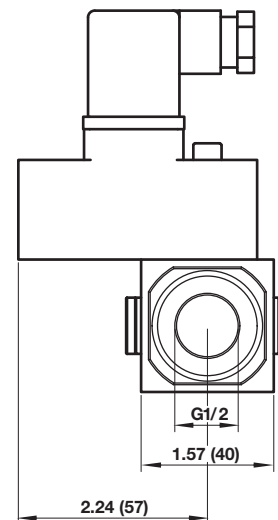
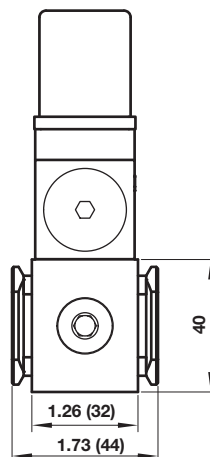
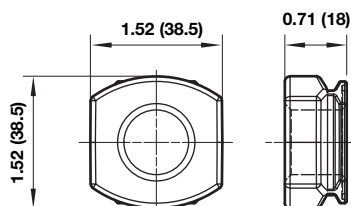
Pressure sensing block

Full flow porting block



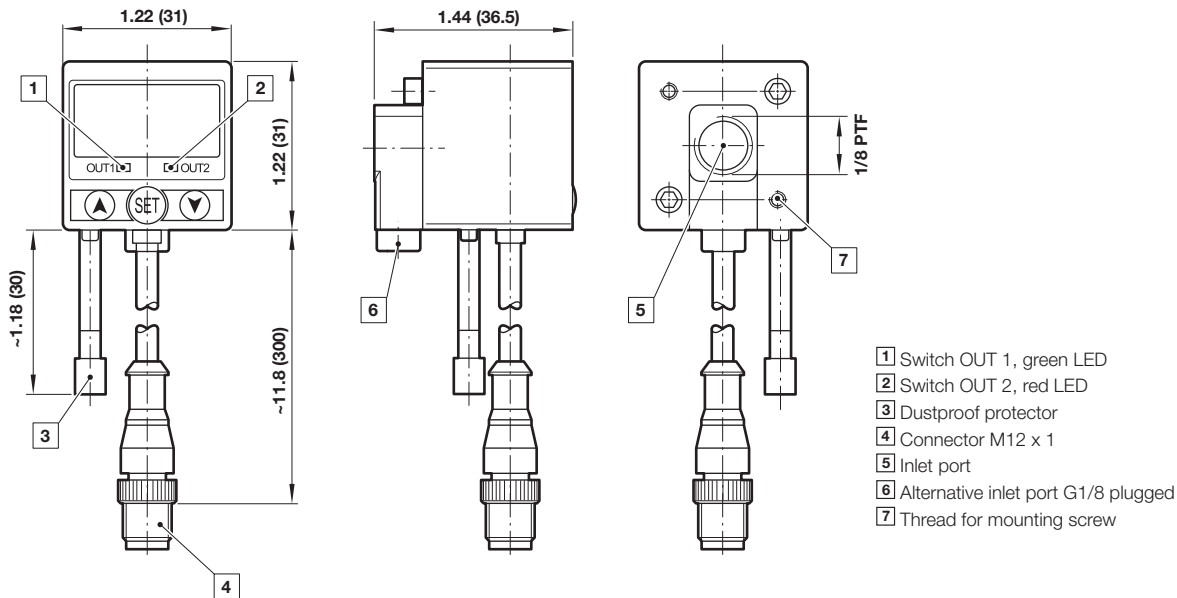
Full flow vertical porting block

Porting block for 18D pressure switch

Dimensions in inches (mm)
 Projection/Third angle


18D Pressure switch

18D Porting block and 18D assembled

Pipe adaptor


51D Pressure switch - digital

Dimensions in inches (mm)
Projection/Third angle



Warning

Improper selection, misuse, age or malfunction of components used in systems can cause failure in various modes. The system designer is warned to consider the failure modes of all component parts and to provide adequate safeguards to prevent personal injury or damage to equipment or property in the event of such failure modes. System designers and end users are cautioned to consult instruction sheets and specifications available from the factory. The system designer/end user is responsible for verifying that all requirements for the application are met.

Warranty

The products described herein are warranted subject to seller's Standard Terms and Condition of Sale, available at seller's website.

Proposition 65: These products may contain chemicals known to the state of California to cause cancer, or birth defects, or other reproductive harm.