

- > Port size: 3/8" to 3/4" (PTF/ISO G)
- > Excelon® Plus design allows in-line installation or modular installation with other Excelon® Plus products
- > Flow sensor provides a nearly constant oil/air ratio over a wide range of flows
- > Double safety lock bowl
- > Metal bowl with prismatic liquid level indicator lens
- > Light weight Polycarbonate bowl
- > All round (360°) visibility of sightdome for ease of drip rate setting
- > Choice of two oil delivery systems



Technical features

Medium:

Compressed air only

Maximum supply pressure:

Polycarbonate bowl: 145 psi (10 bar)

Metal bowl: 290 psi (20 bar)

Bowl

6.7 ounce (0.2 liter)

Port size:

G3/8, G1/2, G3/4,
3/8 PTF, 1/2 PTF, 3/4 PTF

Flow:

Micro-fog : 155 scfm (73 dm³/s)

Oil-fog: 193 scfm (91 dm³/s) at port
size: 1/2", operating pressure:

91 psi (6.3 bar)

and Δp : 7.25 psi (0.5 bar)

Start point:

2 scfm (0.94 dm³/s)

Ambient/Media temperature:

Polycarbonate bowl:

14 to +140°F (-10 to +60°C)

Metal bowl:

-4 to +149°F (-20 to +65°C)

Air supply must be dry enough

to avoid ice formation at

temperatures below +35°F (+2°C).

Materials:

Bowl: PC with PP guard

Metal bowl: Die cast aluminum

Body: Die cast aluminum


Body cover: ABS

Sightdome: Transparent PA

Bowl 'o'- ring: Chloroprene

Elastomers: NBR

Technical data L84 - standard models

Symbol	Port PTF	Lubricator type	Bowl	Weight lb (kg)	Model
	3/8	Micro fog	Guarded polycarbonate	0.9 (0.40)	L84M-3AP-EPN
	1/2	Micro fog	Guarded polycarbonate	0.9 (0.40)	L84M-4AP-EPN
	3/4	Micro fog	Guarded polycarbonate	0.9 (0.40)	L84M-6AP-EPN
	3/8	Micro fog	Metal with level indicator	1.1 (0.53)	L84M-3AP-EDN
	1/2	Micro fog	Metal with level indicator	1.1 (0.53)	L84M-4AP-EDN
	3/4	Micro fog	Metal with level indicator	1.1 (0.53)	L84M-6AP-EDN
	3/8	Oil fog	Guarded polycarbonate	0.9 (0.40)	L84C-3AP-EPN
	1/2	Oil fog	Guarded polycarbonate	0.9 (0.40)	L84C-4AP-EPN
	3/4	Oil fog	Guarded polycarbonate	0.9 (0.40)	L84C-6AP-EPN
	3/8	Oil fog	Metal with level indicator	1.1 (0.53)	L84C-3AP-EDN
	1/2	Oil fog	Metal with level indicator	1.1 (0.53)	L84C-4AP-EDN
	3/4	Oil fog	Metal with level indicator	1.1 (0.53)	L84C-6AP-EDN

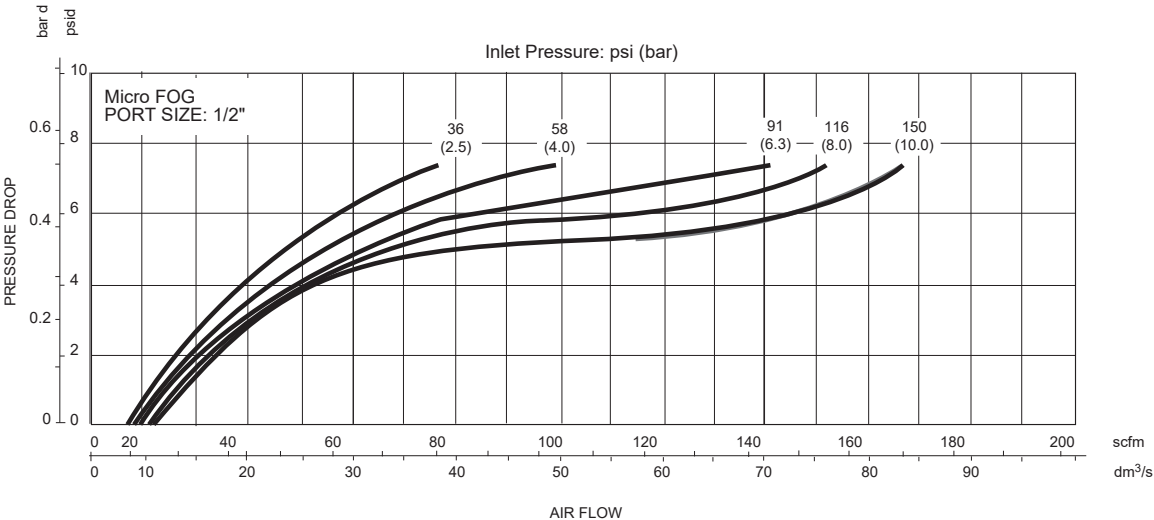
Option selector

Type	Substitute	L84★-★★P-E★N		Bowl	Substitute
Oil fog lubricator	C			Metal with liquid level indicator	D
Micro fog lubricator	M			Transparent with guard	P
Port size	Substitute				
3/8"	3				
1/2"	4				
3/4"	6				
Thread form	Substitute				
PTF	A				
ISO G parallel	G				

Flow characteristics

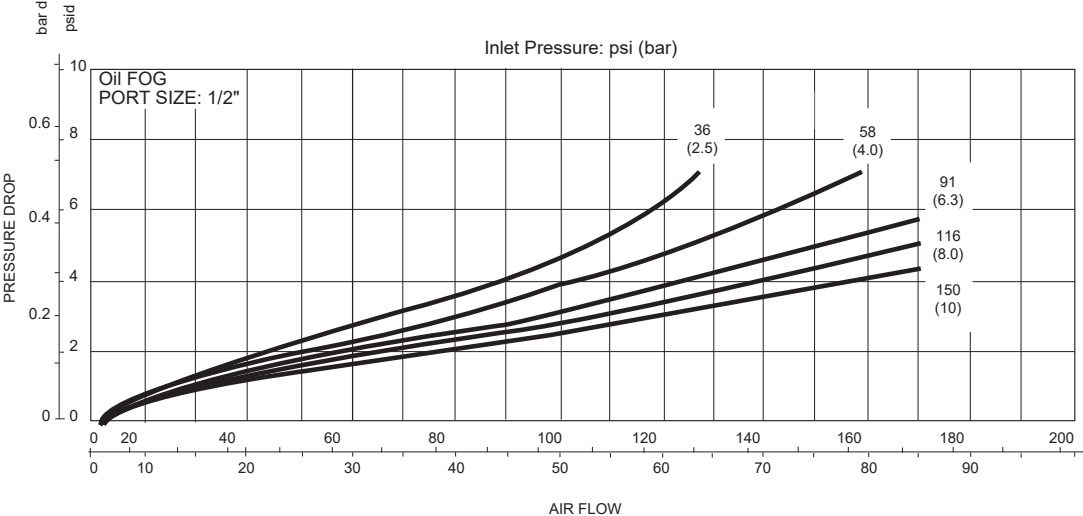
Micro fog

Port size: 1/2"



Oil fog

Port size: 1/2"



Accessories

Wall mounting bracket

Page 5

840024-50KIT

Quikclamp®

Page 5

840014-51KIT

**Quikclamp®
with bracket assembled**

Page 5

840014-52KIT

**Pressure sensing block
1/4 PTF**

Page 5

840016-50KIT

**Pressure sensing block
G1/4**

Page 5

840016-51KIT

**Full flow porting block
3/4 PTF**

Page 5

840028-68KIT

**Full flow porting block
G3/4**

Page 5

840028-69KIT

**Full flow porting block
3/4 PTF**

Page 5

840028-50KIT

**Full flow porting block
G3/4**

Page 5

840028-53KIT

**Pressure switch interface
block (18D pressure switch)
G1/2**

Page 6

0337717000000000

**Pneumatic pressure switch
18D (7 to 120 psi)**

Page 6

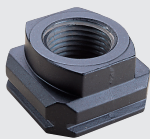
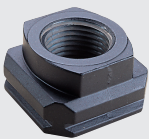
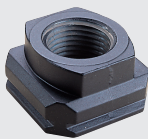
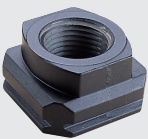
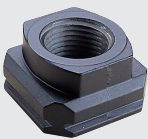
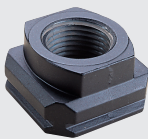
0881300000000000

**Digital pressure switch
51D (-14.5 to 145 psi)**

Page 6

0860811000000000

Accessories



Port Adaptors 3/8 PTF	Port Adaptors 1/2 PTF	Port Adaptors 3/4 PTF	Port Adaptors G3/8	Port Adaptors G1/2	Port Adaptors G3/4
					
Page 6	Page 6	Page 6	Page 6	Page 6	Page 6
840015-02KIT	840015-03KIT	840015-04KIT	840015-10KIT	840015-11KIT	840015-12KIT

Quick fill nipple



18-011-024

Service kits

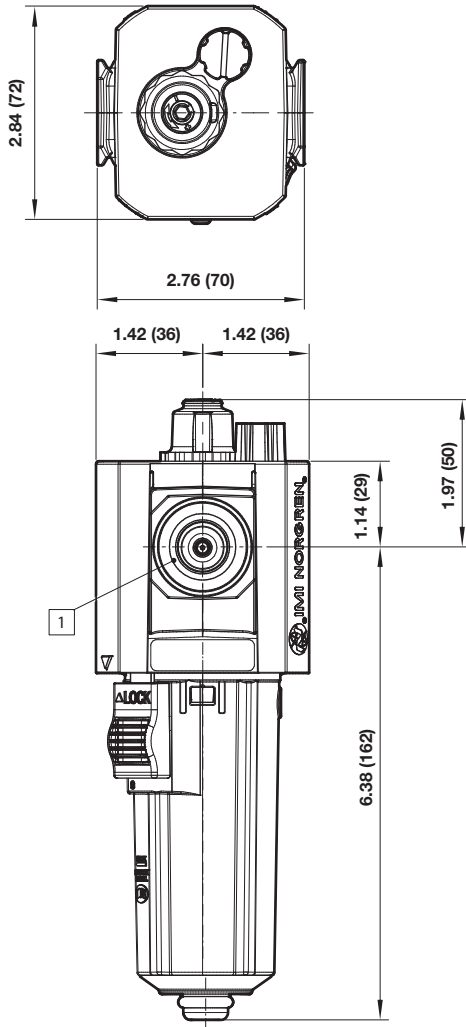
Lubricator bowl Guarded Poly	Lubricator bowl Metal with sight glass
	
840025-52KIT	840003-52KIT

Lubricator sight dome kit	
	
Micro fog (red)	840055-50KIT
Oil fog (green)	840055-51KIT

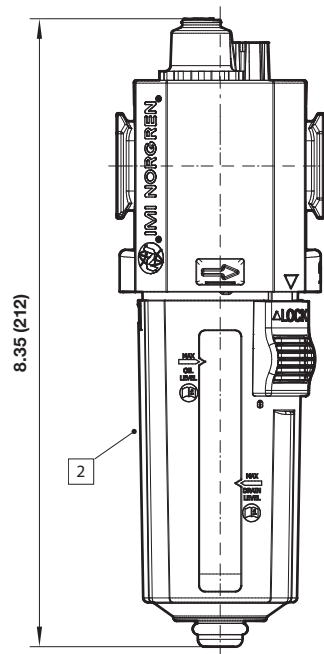


Dimensions

Dimensions in inches (mm)
Projection/Third angle



Plugged bowl



- 1 Main ports 3/8", 1/2" or 3/4"
(ISO G/PTF)
- 2 Transparent bowl with guard

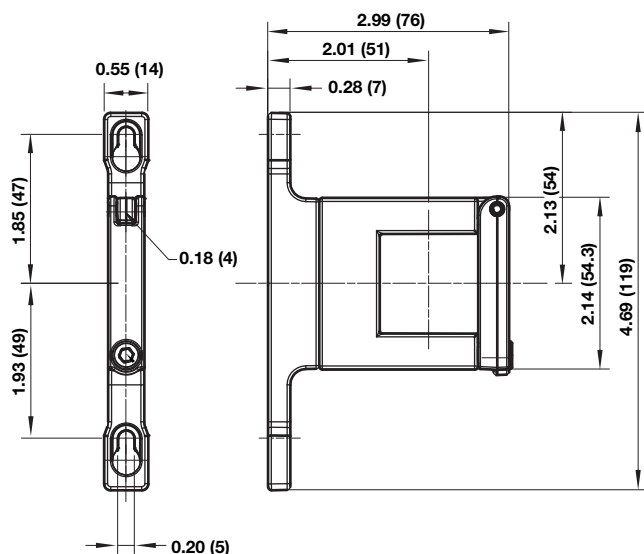
Accessories

Dimensions in inches (mm)

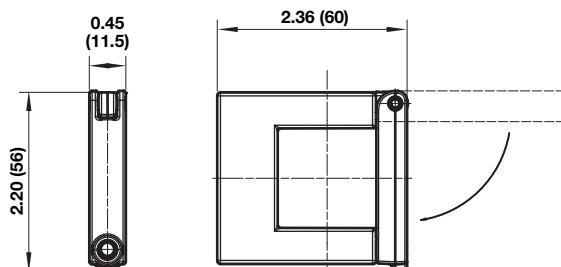
Projection/Third angle



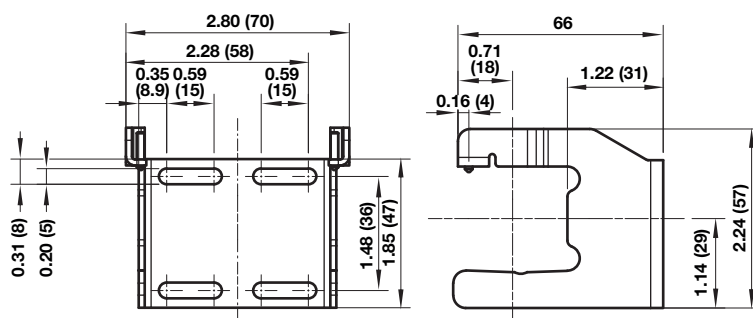
Quikclamp® with wall bracket



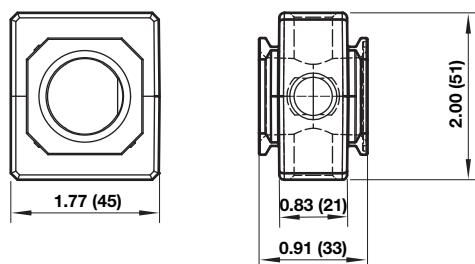
Quikclamp®



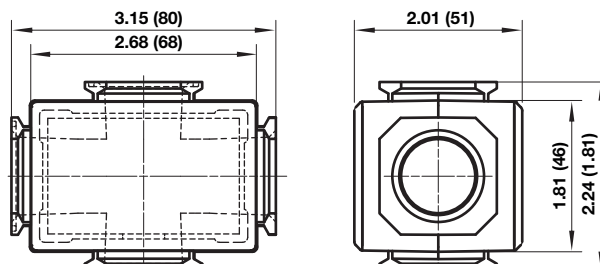
Mounting bracket

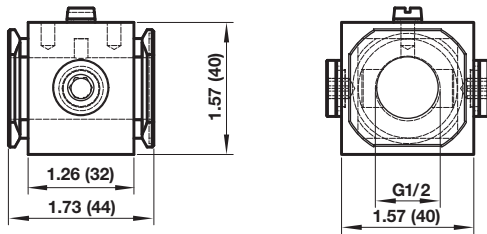


Pressure sensing block

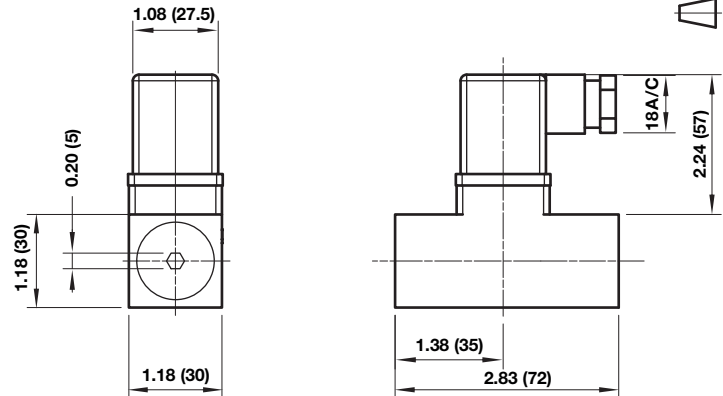
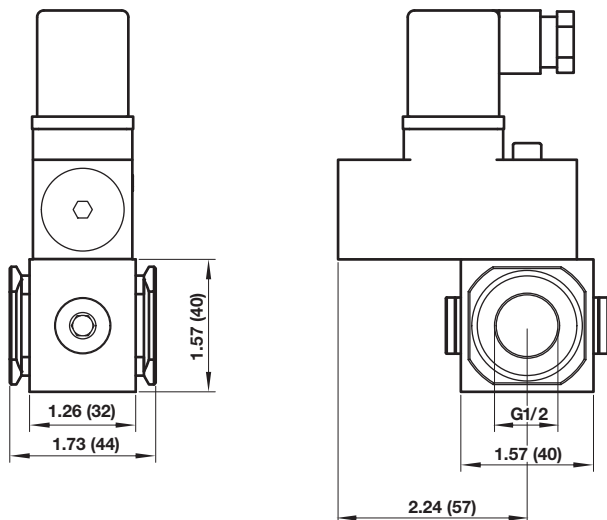
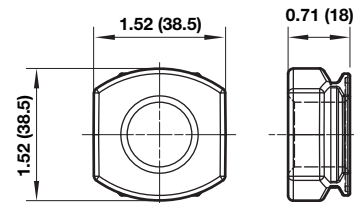


Full flow porting block



**Porting block for
18D pressure switch**

18D Pressure switch

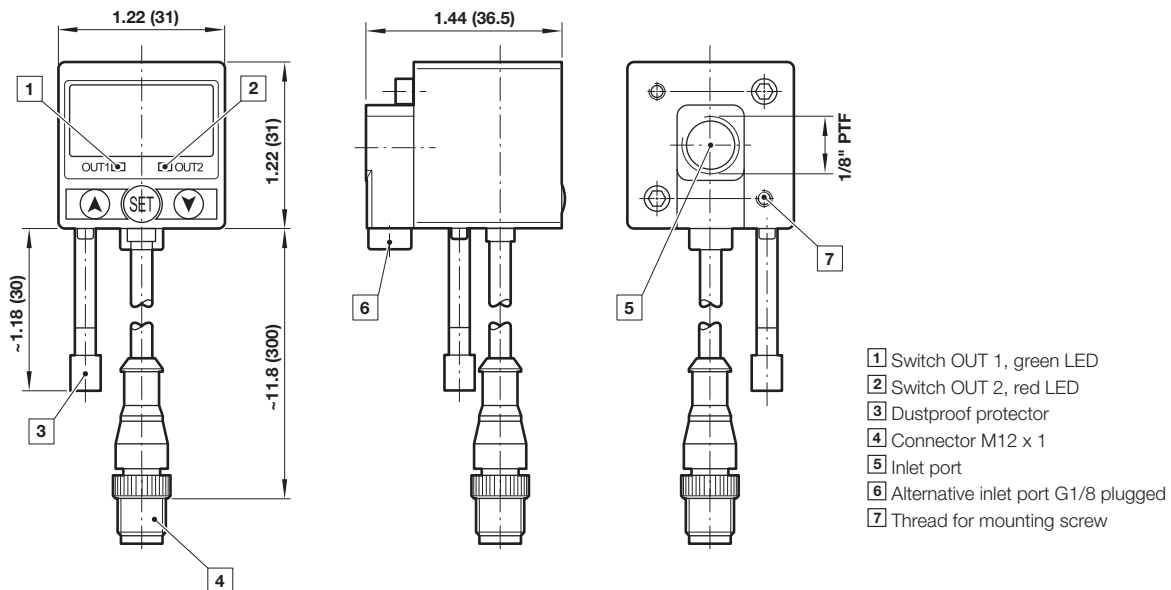
Dimensions in inches (mm)
Projection/Third angle


**18D Porting block and
18D assembled**

Pipe adaptor


51D Pressure switch - digital

Dimensions in inches (mm)

Projection/Third angle



Warning

Improper selection, misuse, age or malfunction of components used in systems can cause failure in various modes. The system designer is warned to consider the failure modes of all component parts and to provide adequate safeguards to prevent personal injury or damage to equipment or property in the event of such failure modes. System designers and end users are cautioned to consult instruction sheets and specifications available from the factory. The system designer/end user is responsible for verifying that all requirements for the application are met.

Warranty

The products described herein are warranted subject to seller's Standard Terms and Condition of Sale, available at seller's website.

Proposition 65: These products may contain chemicals known to the state of California to cause cancer, or birth defects, or other reproductive harm.